



# Targeted technical and operational assessments

**A KPMG Service for G-Cloud 14**

May 2024  
[kpmg.co.uk](https://kpmg.co.uk)



# KPMG About us

KPMG is one of the largest Cloud Advisory & Implementation providers in the UK.

We bring end-to-end services across the entire cloud journey from Strategy and Planning, Designing, Building and Securely running clients Cloud environments with a diverse and multi-disciplined team

<p>Cloud Practice in its <b>8th</b> year</p>	<p><b>1000+</b> Cloud Team (750+ Architects and Engineers, 250+ Advisors &amp; consultants)</p>	<p><b>2000+</b> cloud certifications in Azure, Google, AWS</p>	<p><b>£50M +</b> cloud spend supported annually</p>	<p><b>600+</b> cloud projects completed</p>	<p><b>50%+</b> Focused on highly regulated industries</p>
--	---	--	---	---	---

## KPMG Cloud practice

- Deep domain experience across a wide range of Cloud providers and technologies
- Leading and award winning scaled engineering capability
- Long established consulting approach and methodologies

## Our Principles

- Industrialised approach reusing assets and accelerators
- Automate everything
- Deliver value for money
- Pride ourselves on high quality outcome deliverables

## How we Operate

- Sprint based projects for fast iterative results
- Outcome focused multi-disciplinary teams
- Deliver with our clients, upskilling as we go
- Bringing constructive challenge and opinions
- Strong, established network to ensure partnering excellence

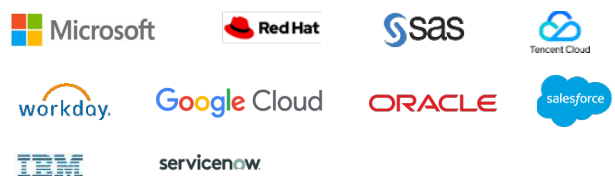
## Our Core Cloud Propositions Besides the core cloud propositions we deliver 120+ services mentioned in our Service Catalogue

<p>Cloud Strategy</p>	<p>Cloud Value Management - FinOps</p>	<p>Cloud Build, Migrate &amp; Transform</p>	<p>Operating Model &amp; Cloud Centre of Excellence</p>	<p>Security &amp; Risk, Controls and Cyber</p>
<p>Cloud Managed Services, DevOps as a Service</p>	<p>Cloud Data &amp; Analytics</p>	<p>GenAI</p>	<p>Programme Management &amp; Change Adoption</p>	<p>ESG</p>

Across our many delivery centres, we work with clients of all industries, specialising in complex, high risk or regulated sectors.



Combining our expertise with our alliance tech solutions, we harness the power of smart technologies. Together, we solve your most complex business issues to create sustainable success.





# Targeted technical and operational assessments



## Service Description:

KPMG supports clients with assessments over solutions, including third party solutions, and artefacts, such as exit plans to provide independent assurance and prioritised recommendations prior to go live or in BAU.



## Service Categories

- Targeted technical.
- Operational assessments



## What are the benefits of KPMG Powered IT service?

- Targeted SME reviews
- Tangible prioritised recommendations
- Independent assurance
- Risk rating and residual risks overview



## Our service features

Targeted assessments to assess readiness for cloud migration or areas of improvement.



# Our Approach

**KPMG proposes a well-defined approach that will assist in delivering a customised targeted and operational assessments for organisations on cloud or migrating to cloud. Using our global framework, industry experience and methodologies we will accelerate technical assessments to assess compliance, security, data governance and resilience to provide tailored and prioritised recommendations.**



## Requirements

- Underpinning policies, procedures, and standards for each in scope processes
- Access to key stakeholders
- Agreement on scope areas with Customer and CSPs/SaaS vendors.



## Activities

A three phased approach is generally taken to perform the targeted technical and operational assessments of cloud control environment. The three phases include

### Mobilisation

- The initial phase involved focused on scoping the domains to be included and prioritising controls. This phase also entails development of comprehensive controls testing strategies, the compilation of an initial list of required evidence and artefacts, and agreement of a cohesive schedule for conducting onsite assessments.

### Controls Testing

- From the formulation of the test strategies developed in phase one, a targeted controls assessments are performed. Distinct assessment methodologies are applied for the different control priorities. Controls are assessed through walkthroughs, desktop reviews, evidence reviews.

### Reporting

- The final phase captures all the assessment results for the controls which includes heatmaps, observations, management comments and planned action



## Outcomes

- Detailed observations
- Themes of observations and risk priority
- Risk ratings and residual risk
- Impact assessment
- Heat map
- Prioritisations
- Planned actions
- POAP – Implementation roadmap



## High-Level Timelines

Our indicative timeline is based on our experience of delivering similar engagements for multiple organisations. Once engaged, we will work with you to create and agree a bespoke plan to meet your specified requirements.

**Weeks: 8 – 12 weeks**





# Why KPMG



## Top Professional Brand

We have robust methodologies. We are focused on customer needs and have a pragmatic approach for the design and delivery of our Projects. Our team has a proven track record in delivering similar engagements and an intimate knowledge of challenges faced by our clients. KPMG has a strong brand and excellent reputation.



## Constructive input and challenge

We consider it to be our responsibility to bring an independent perspective and constructively challenge existing processes and systems. We will highlight and share with you both internal and external leading practice



## We employ a collaborative, integrated team approach

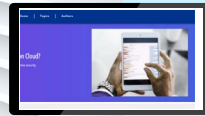
We deliver a full suite of recommendations, in collaboration with KPMG sector and technical experts in all parts of our business around the globe. By working in multi-disciplinary teams, we deliver holistic thinking and insights to even the most complex challenges.



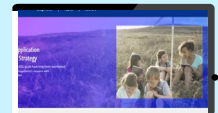
## We have strong relevant recent credentials

We have worked across multiple industries and will bring insight from other sectors to challenge your thinking. We have vast Cloud & DevOps expertise around UK region alone within our technology practice who cover everything from hosting strategy to building landing zones. We produce agile, resilient and efficient IT functions that support the wider enterprise

## Thought Leadership



How to secure your data on cloud



ESG Centric app. development strategy



Why a "Cloud Exit Strategy" is essential



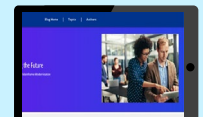
AI & Cloud

## 100+ POVs/Blogs

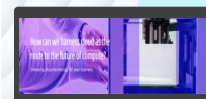
Some of them are displayed here



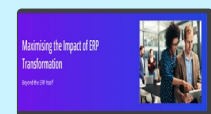
What does sustainability in IT really mean?



Mainframes modernisation



How can we harness cloud as the route to the future of compute?



Enterprise Architecture considerations for ERP

And many more....



## KPMG Industry Analyst Recognition



2022 Partner of the Year Winner  
Dynamics 365 Finance Award  
2022 Partner of the Year Finalist  
Global SI & Advisory Digital Transformation Award  
Advisory Services Award

Microsoft Partner of the year for 2023



Global Partner of the year 2024  
Google Cloud DE&I Partner 2024



2020, 2021, 2022

Highly Commended / DevOps Leader of the Year 2023



The Forrester Wave™: Cybersecurity Consulting Services in Europe, Q1 2024



KPMG named a global Leader in Verdantix Green Quadrant: ESG and Sustainability Consulting 2024



2x Guinness World Records for DevOps and Cloud upskilling

DevOps upskilling in KPMG and the community



UK'S LEADING MANAGEMENT CONSULTANTS 2023



WOMEN IN TECH EXCELLENCE AWARDS 2021

Industry analysts recognition and accolades - KPMG Global



## Contact Us



### Jonathan Grice

Director, **Head of Cloud Infrastructure  
Government and Healthcare**

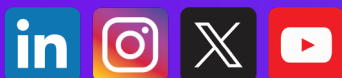
KPMG LLP, CIO Advisory  
15 Canada Square  
London E14 5GL  
Email: [jonathan.grice@kpmg.co.uk](mailto:jonathan.grice@kpmg.co.uk)



### Douglas Dick

Director, **Head of Cloud Risk  
Controls**

KPMG LLP, FS Tech Risk  
15 Canada Square  
London E14 5GL  
[Douglas.dick@kpmg.co.uk](mailto:Douglas.dick@kpmg.co.uk)



[kpmg.com/uk](https://kpmg.com/uk)

The information contained herein is of a general nature and is not intended to address the circumstances of any particular individual or entity. Although we endeavour to provide accurate and timely information, there can be no guarantee that such information is accurate as of the date it is received or that it will continue to be accurate in the future. No one should act on such information without appropriate professional advice after a thorough examination of the particular situation.

© 2024 KPMG LLP, a UK limited liability partnership and a member firm of the KPMG global organisation of independent member firms affiliated with KPMG International Limited, a private English company limited by guarantee. All rights reserved.

The KPMG name and logo are trademarks used under license by the independent member firms of the KPMG global organization.

**Document Classification: KPMG Confidential**