



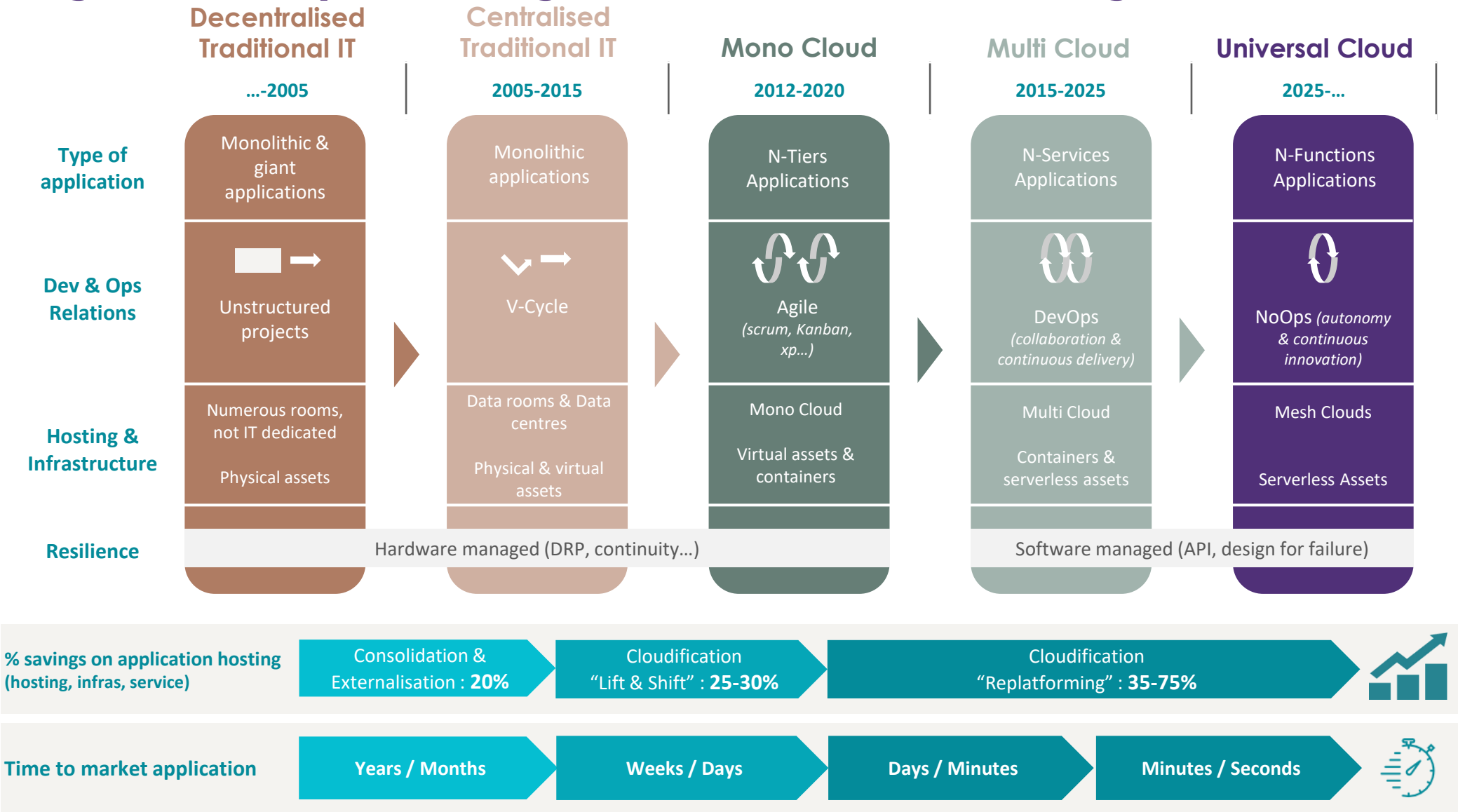
Cloud Risk and Exit Strategy

G-Cloud 13

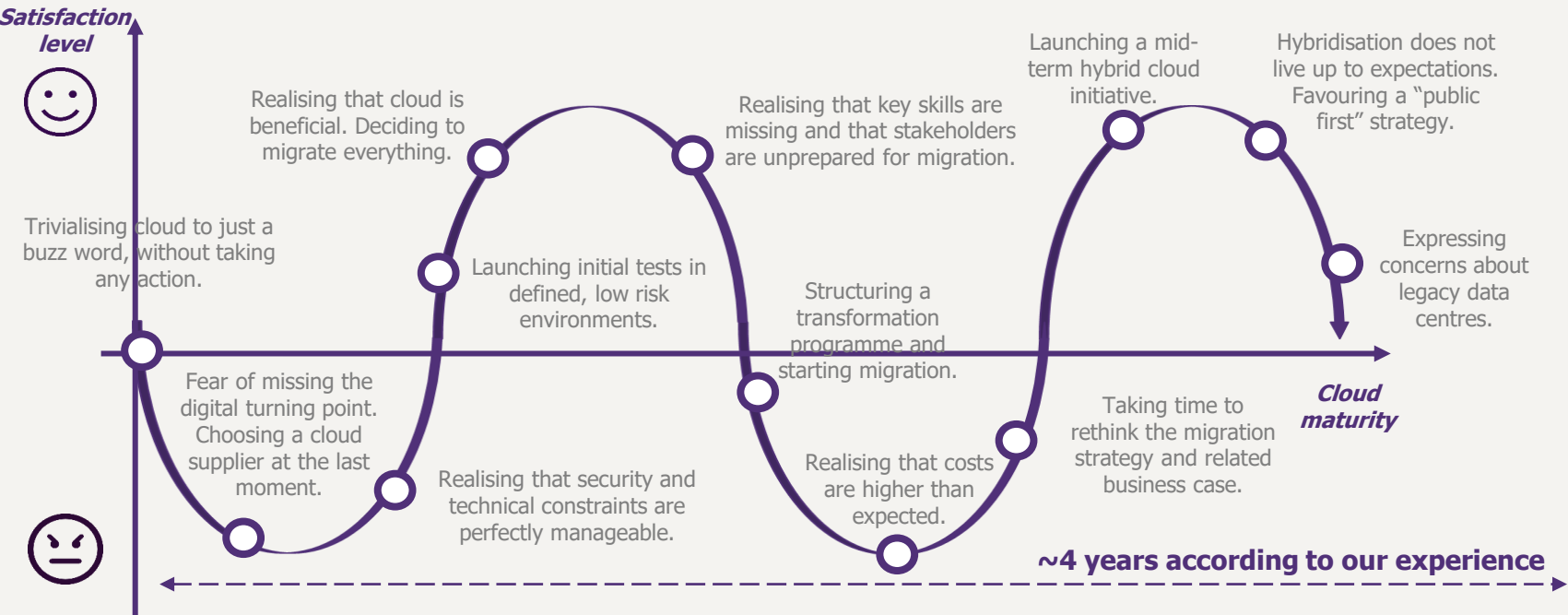
April 2022



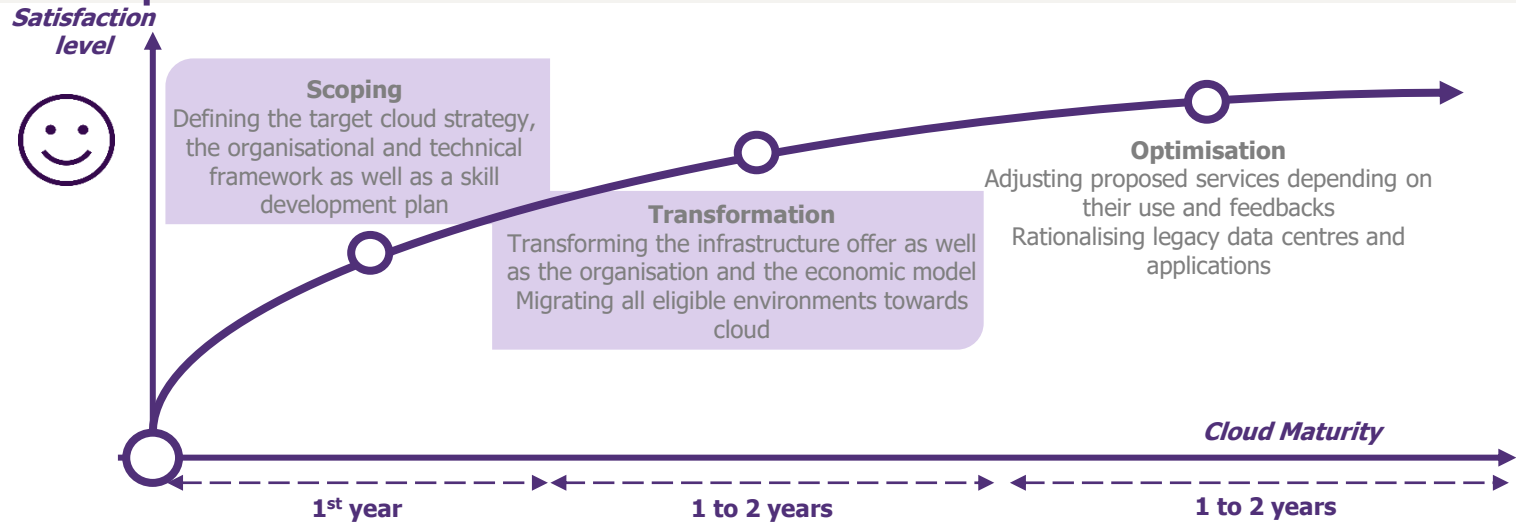
Wherever you are in your cloud journey, defining the appropriate organisation and operating model is key to realising the benefits of new technologies.



We help you mitigate the challenges typically encountered in migrating to and integrating cloud solutions and technologies into the organisation.

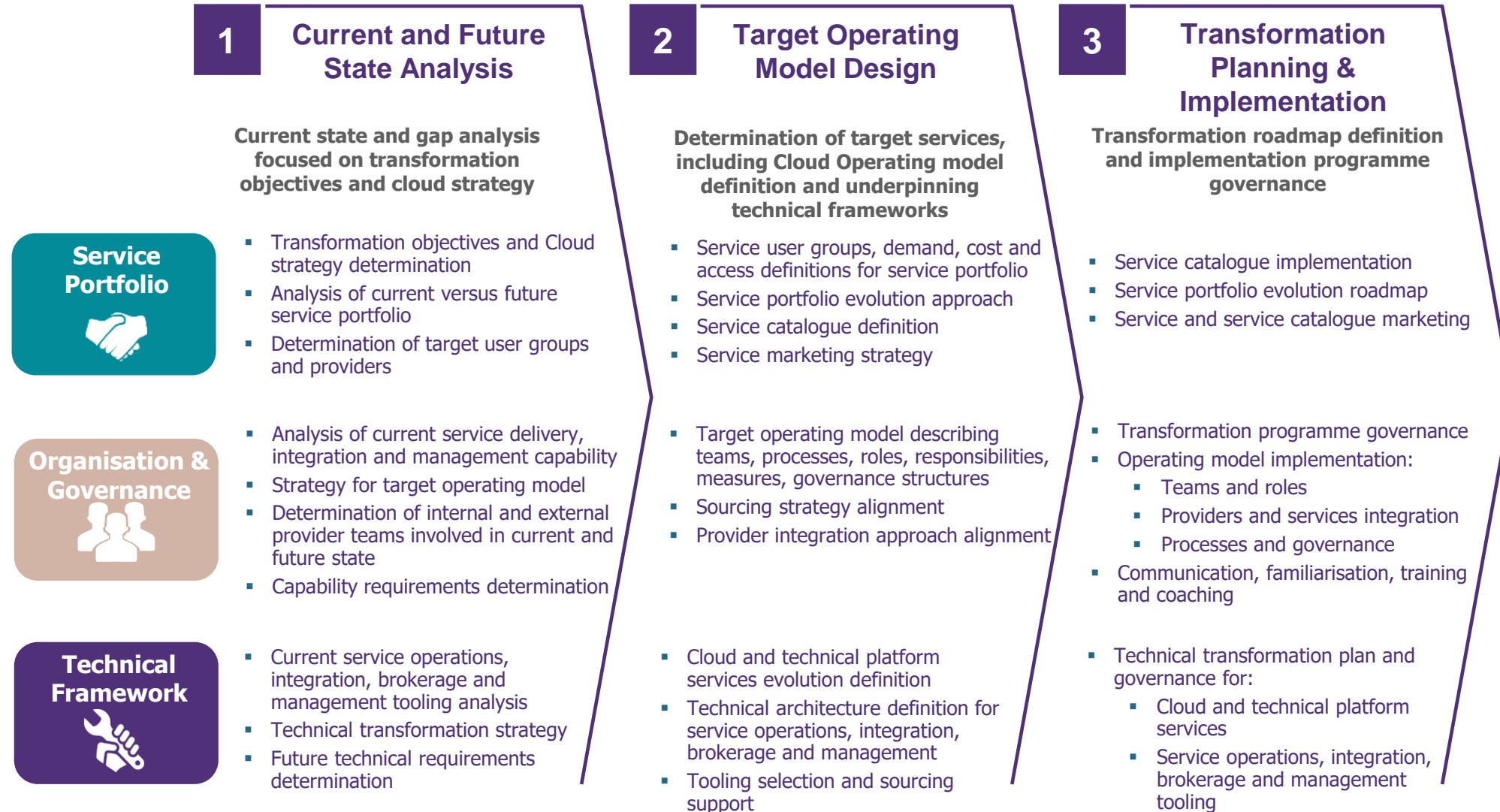


The traditional peak-and-trough journey




A quick, efficient and steady end-to-end process

Our holistic and structured approach to organisation and target operating model design ensures there are actionable plans for all areas of your organisation



Organisations should have one eye on exiting a provider and 'reverse cloud migration' activities

1. Define Management & Governance

Approval authority, success criteria and confirmation of the working group

2. Current State Assessment

Defining the as is in order to understand the challenging of an exit

3. Risk Assessment

Ensuring risks and how/why they might trigger an exit are understood

4. Decide Cloud Exit Strategy

The approach to exit under various scenarios and how impact tolerances will be protected

5. Define Target State

The end goal of an exit

6. Develop Exit Plan

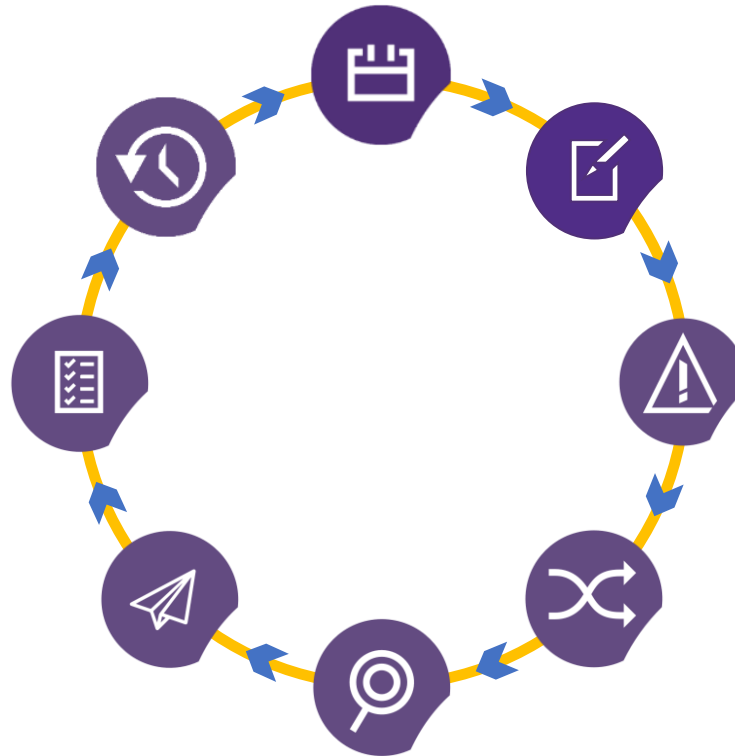
The detailed steps to implement the exit strategy

7. Plan Testing

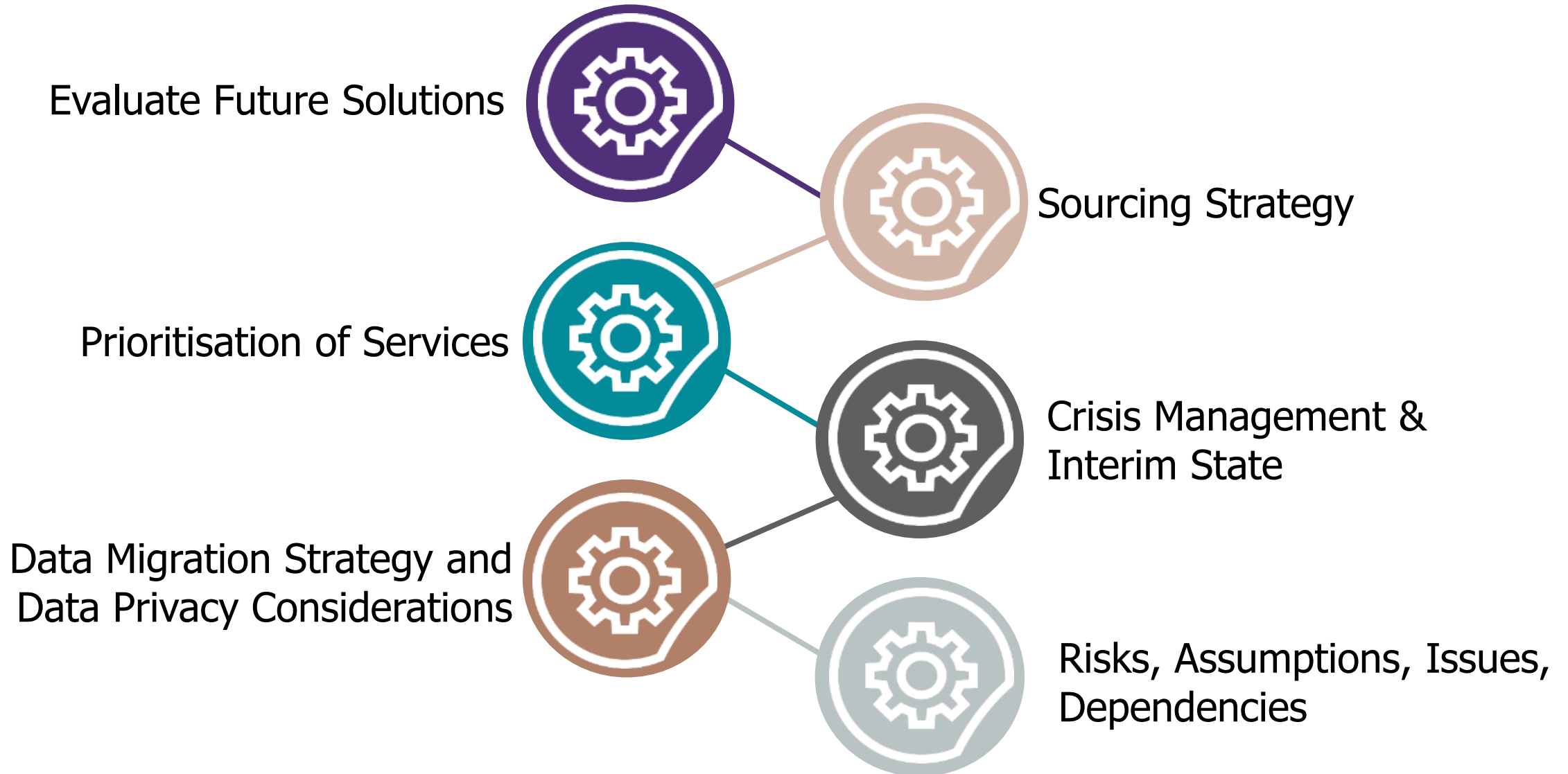
Testing to prove the viability of the strategy and plan

8. Plan Updates

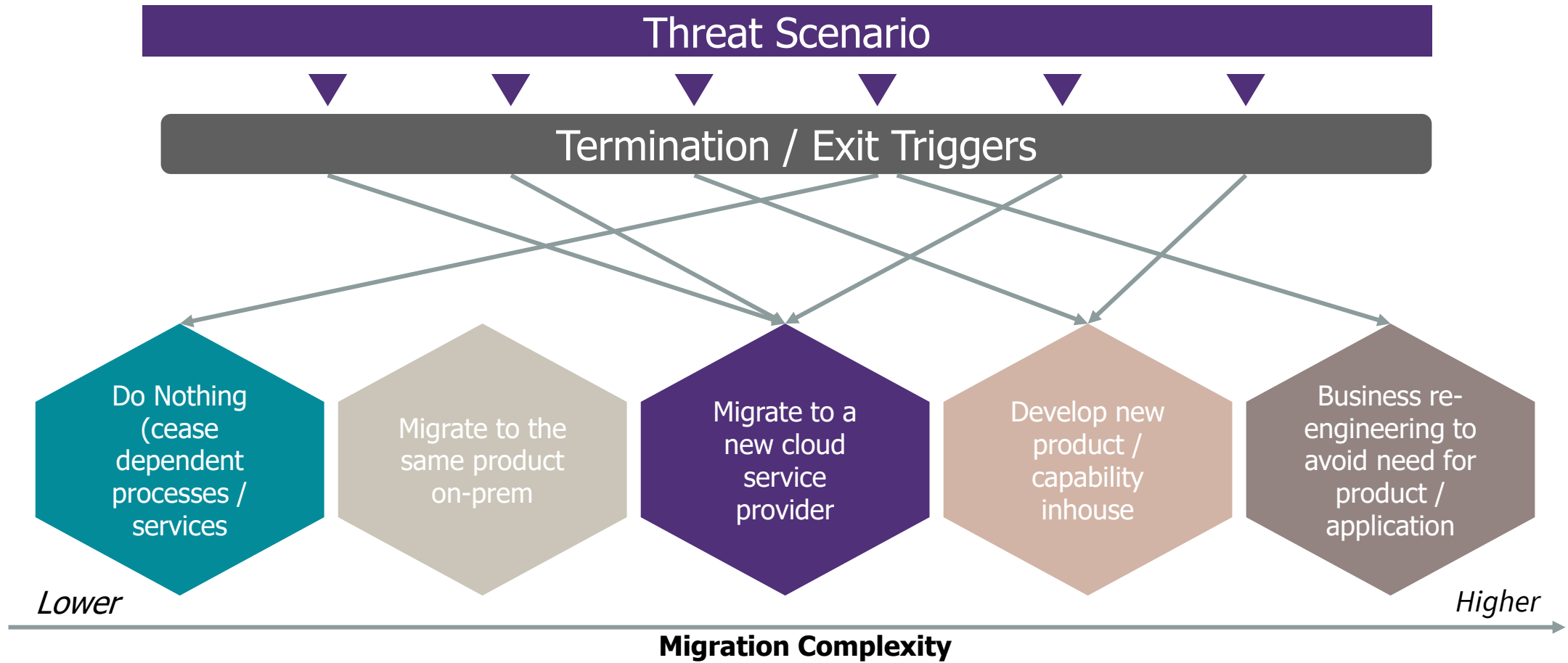
Cyclical updates and/or updates based on test results



Exit Strategy Overview – key considerations



Termination & Exit Strategy Ecosystem





Appendix

Stimulated by solving challenges and driven to succeed



Business
&
Technologies



Transformation



Positive Way

A unique ability to combine in-depth industry expertise, business functions know-how and technology mastering

BUSINESS FUNCTIONS

Strategy

Innovation management
& funding

Marketing, sales & customer
experience

People & change

Finance, risk & procurement

Operations & supply chain

INDUSTRIES

Financial services

Telecom, media & entertainment

Consumer goods & retail

Manufacturing

Energies & utilities

Transportation & travel

Real estate

Public sector & international
institutions

TECHNOLOGY

Digital & IS strategy

Digital & emerging technologies

IT & data architecture

Cybersecurity & digital trust

Wavestone, a fast-growing company



Pure-play
consultancy



€470m

15 offices
in 9 countries



3,500+
employees

Multidisciplinary approach

Collaborative consulting style

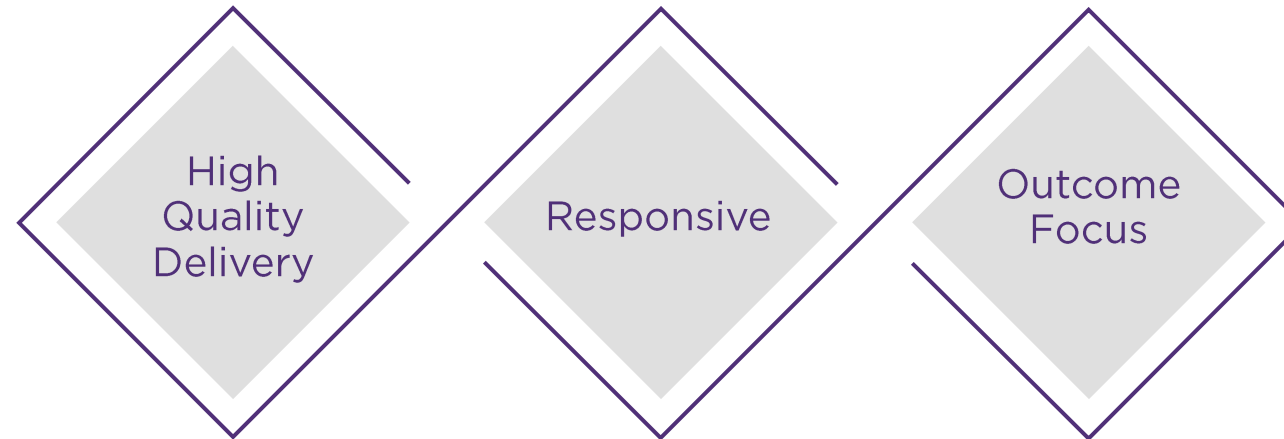
Three children are shown from the chest up, wearing white hard hats and large black-rimmed glasses. The child on the left is a girl with dark hair, wearing a white shirt and a dark bow tie. The child in the middle is a boy with dark hair, wearing a dark sweater over a light blue collared shirt. The child on the right is a boy with light hair, wearing a dark sweater over a light blue collared shirt. Each child has a label on their hard hat: 'THINKER' on the left, 'Thinker360' in the middle, and 'IDEAMETER' on the right. They are all smiling and looking towards the camera.

Blend different skillsets
from breadth of
expertise

One Global company, flat
structure, do not operate
in silos

Account Manager as
single point of contact

How our culture drives the best outcomes for our clients



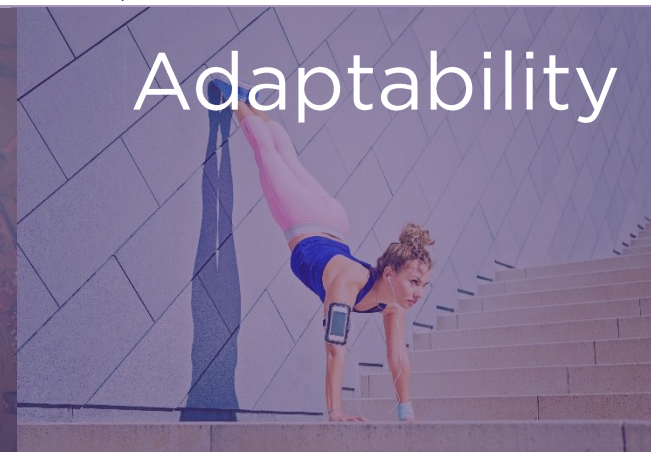
Attitude

Based on **teamwork** and **enthusiasm**, which drives the mentality to succeed with our clients



Approach

Transparency drives **honesty** and **intimacy** to create an environment of trust. Leave a legacy.



Adaptability

Always bring the best capabilities, with **flexibility** to change, delivered from a single point of contact

Here's what our clients say....

*I find there is masses of **energy and enthusiasm** and work alongside us effortlessly... through our partnership and **honesty**, we ended up in a position where we got the **outcome** we all wanted.*



COO | Global Investment Bank

*Wavestone provided programme management expertise at a very critical and sensitive time in the project. Your team was **always at our side** even through the toughest of times. Our engagement always felt like a **deep partnership**.*



US COO | Global Bank

*It has been a pleasure with working Wavestone. You have brought some much needed **expertise** and thinking to the work we have undertaken and I appreciate both the **professionalism** and **collaborative nature**.*



Head of Department | UK
Regulator

Here's some of our recent work

Investment Bank



A Cloud Security review to recommend a unified cloud solutions in a secure way, with cost-effective approach



UK Government Entity



Established an effective go-to-market strategy for the future procurement of WAN services, with advisory on improving



UK Regulator



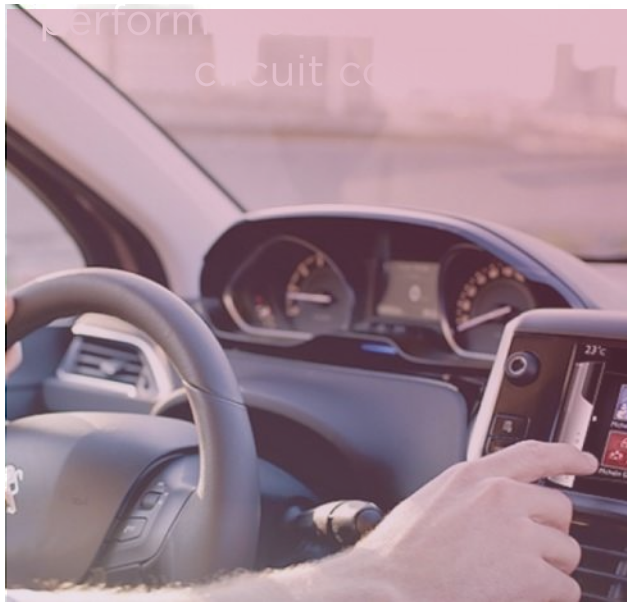
Review of cyber recovery capability to ensure preparedness for recovery from a Cyber-Attack



Large Government Department



Technical Debt discovery exercise to help provide centralised view of IT Estate



The Positive Way

WAVESTONE

Mike Newlove
Partner



Jim Hennigan
Partner



uk.wavestone.com

@wavestone_UK