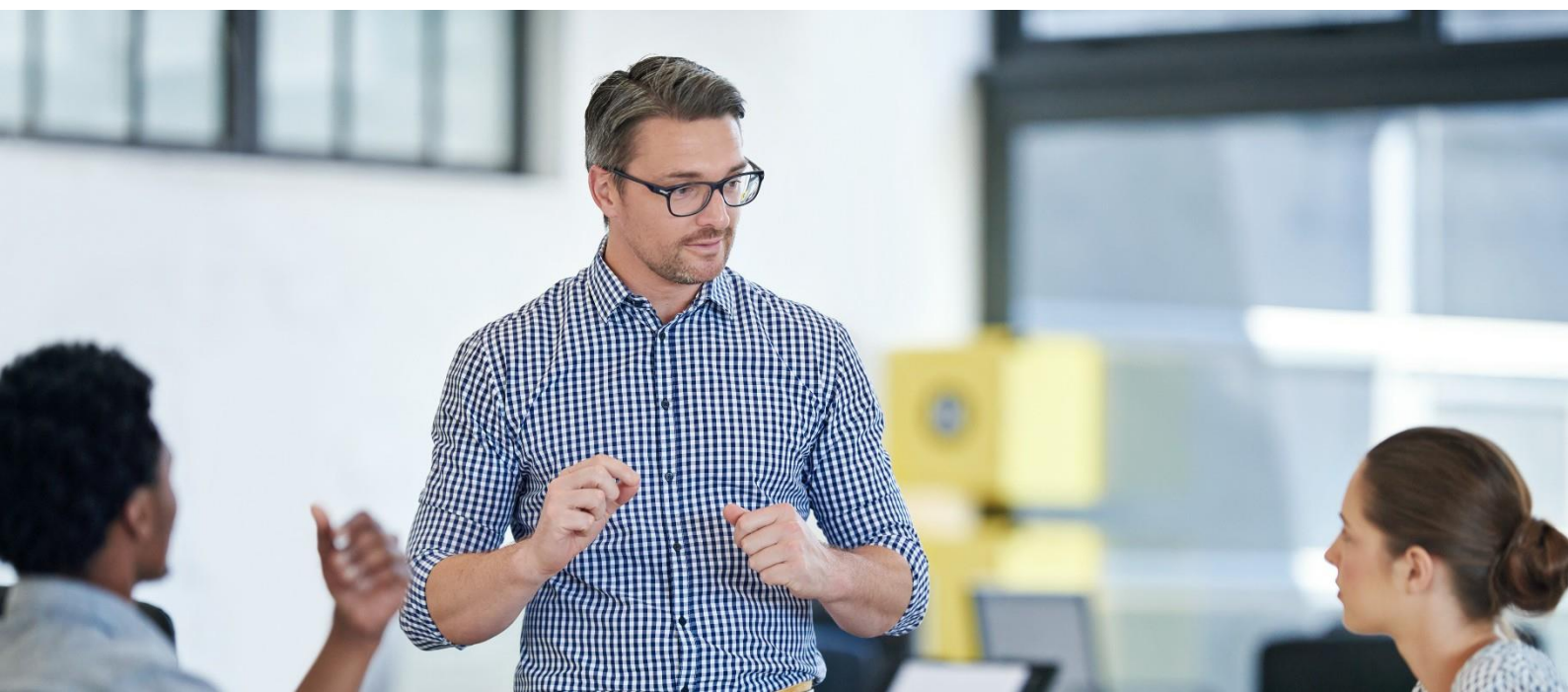


## IBM Security – Threat Management Consulting Services

IBM provides leading vendor-agnostic advisory services to mature your security operations capabilities.





## Contents

3	Service Overview
5	Addressing Business Needs
6	Service Definition
7	IBM Approach
8	Why IBM?
9	Value and Outcomes
11	About IBM

# IBM Security – Threat Management Consulting Services

## Service Overview

### Features

- Tailored, vendor agnostic services aligned to your security operations strategy.
- Ensure adherence to industry frameworks and standards to meet UK Government regulatory and compliance requirements.
- Includes advisory and implementation services to support your entire programme.
- Align future state roadmap with your existing capabilities and investments.
- Design viable roadmaps that reduce risk and drives cost efficiency.

### Benefits

- Develop a security operations programme that balances value and cost.
- Improve the capabilities of your existing security operations team.
- Accelerated time to value through operationalising new and existing tooling.
- Improved preparedness for cybersecurity incidents and breaches.

### Key Differentiators

- Extensive expertise supporting the most business-critical services for UK government, including Critical National Infrastructure across IT and OT.
- Comprehensive experience with an array of UK Government regulatory and industry frameworks for security, privacy and resilience.
- Tailored approach based on your preferred approach, acting as an extension of your team.
- Vendor agnostic, receive advisory services that leverage and optimise your existing tooling and resources.

# IBM Security – Threat Management Consulting Services

## Addressing Business Needs



IBM Security – Threat Management Consulting Services supports you in transforming your security operations and maturing your threat management programme.

Our team can help you address key challenges that organisations like yours are facing today:

### **Technology Optimisation**

Organisations have made significant investments in technology and need support to optimise the value and performance of these tools, rather than purchasing additional technology.

### **Lack of Skilled Resources**

Lack of skilled human resources and adequate tools to manage day-to-day security operations and develop new capabilities.

### **Regulatory Landscape**

Constantly shifting regulatory landscape requires continuous review and updates to policies, procedures and control frameworks specific to your industry and regulatory context.

### **Growing Attack Surface**

Innovative technologies and new threats have expanded attack surfaces and transformed the requirements for an effective security operations programme.

### **SOC Management**

Gaps in architecture and inefficient processes inhibit organisations' ability to reduce time to detect and respond to security incidents.



# IBM Security - Threat Management Consulting Services

## Service Definition

We provide a variety of advisory and implementation services that provide expertise from current state assessment, roadmap development and design and build services.

Threat Management Consulting Services are designed to be tailored to meet business requirements and align with potentially different levels of internal capability, providing commitment to service and quality levels throughout the engagement.

IBM Security - Threat Management Consulting Services provide a full range of capabilities including:

### **1. Maturity Assessment**

Comprehensive assessment of the current state of your IT/OT security operations against leading frameworks, such as ISO 27001, NIST CSF and MITRE ATT&CK, to address identified gaps or weaknesses. Our experienced cyber security consultants can work with you to:

- Measure current state capabilities, maturity and compliance;
- Identify strategic and tactical recommendations; and
- Develop a roadmap to implement recommendations.

### **2. Technology Optimisation**

Design, deploy and optimise your preferred technologies within your security operations.

### **3. Design and Build Services**

Based on your business objectives, compliance requirements, existing investments and current state operational requirements, we will work with you to:

- Transform your security operations programme;
- Leverage existing resources and investments;
- Benchmark your SOC metrics against best practice to improve performance.

## IBM Approach

We bring the benefit of having worked with the world's largest organisations, transforming complex, critical services. Our approach is based on robust methods, processes and personalised engagement.

We focus on your business needs and developing trusted long-term relationships, underpinned by industry-leading experience and capabilities. We want you to get the best out of every engagement and to deliver outcomes that matter for your organisation.

Our approach is tailored to your needs and flexible to support all delivery models. We offer established programme and portfolio capabilities that can be aligned with your internal governance and methods, linking to industry recognised standards such as MITRE ATT&CK, NIST and ISO27001.

We bring specific skills and attitudes including:

- Proven delivery track record working in complex environments
- Access to specialists who understand the lessons and risks for transformation
- Being able to advise, support and transfer knowledge with your teams
- Implementing strong governance, defined collaboratively within the context of robust methods and processes
- Bringing an integrated and controlled planning approach
- Proactive identification and management of risks and issues based on experience
- Working across complex existing and new platforms
- Experience with the latest technologies, tools and delivery methods

We work to manage the complexity of key business projects, programmes and portfolios, communicating with clarity and helping you make informed decisions.



## Why IBM?

IBM provides a unique blend of cybersecurity and business expertise to help organizations through their transformation journey including:

- Extensive expertise supporting the most business-critical services for UK government, including Critical National Infrastructure across IT and OT.
- Comprehensive experience with UK Government, industry and regulatory frameworks for security operations.
- Breadth and depth of experience across regulated industries in co-creating a strategy to implement or enhance security operations programmes.
- Program governance tailored to your organisations needs, including the development and implementation of new and existing technologies, based on your preference.
- Building long-term client relationships based on innovation, trust and service excellence.
- Developing and deploying world-class talent

IBM can provide you with a comprehensive evaluation of your security operations, and support with remediating against any findings using proven industry standards and best practices.

We focus on your business needs and developing trusted long-term relationships, underpinned by industry-leading experience and capabilities so that you can be confident in the support of your critical services.

### **1. Maturity Assessment**

- Independent assessment of your cyber security operations, enabling identification of gaps and associated remedial measures.
- Includes current state observations and recommendations against industry best practices and best in class tools and models suited to your needs.
- Receive a personalised roadmap that lays out the steps to enhance your threat management capabilities.

### **2. Technology Optimisation**

- Increase value from existing investments.
- Reduce costs from optimised tooling and avoiding potential additional investments.

### **3. Design and Build Services**

- Establish a security operations programme aligned with organisational objectives to effectively manage threats and meet compliance requirements.
- Develop and implement a SOC architecture that reduce disruption costs and recovery times of key business processes.
- Test plans and playbooks against simulated cyber-attacks to improve crisis management.
- Optimise your security operations against best practice and industry benchmarks.





## About IBM

### Supporting Government



We help government organisations in the UK and worldwide deliver and transform essential public services – our teams are passionate and proud about helping you to make a real difference to people's lives.

The problems we solve for clients are complex and cannot be satisfied with technology alone. They require a partner that can also offer deep industry expertise and a relationship of trust.

IBM combines the portfolio, people and sense of purpose necessary to meet today's enterprise demands. Every day, we support and manage complex delivery for government clients where the impact of delivery has wide-reaching impact on citizens and national services.

We bring access to the industry experience, insight and technology capability to deliver and operate secure, scalable, optimised and available services for government.

#### Government Services Supported by IBM



Defence and Intelligence



Public Safety and Policing



Healthcare



Life Sciences



Tax and Revenue Management



National Infrastructure



Social Care



Education



Works and Pensions

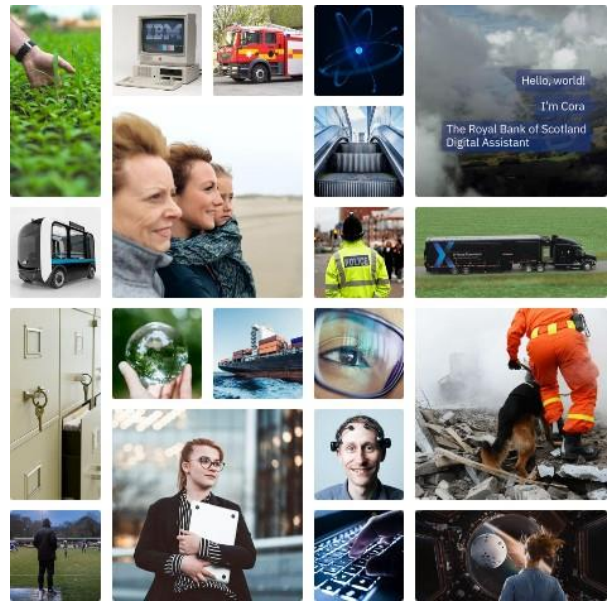
#### We support you by bringing:

- Industry expertise – Professionals who understand and are passionate about delivering quality public services and can bring industry insights and apply innovation to your business processes
- Trust and security capabilities – Protecting valuable data and insights and deploying new innovations responsibly
- Innovative technology – Expertise in areas such as AI, blockchain, 5G, Automation, IoT, cybersecurity and quantum, delivered in a Hybrid Cloud environment
- Experienced Services professionals to support strategy, innovation and deliver transformation and change to processes, applications, and cloud infrastructure
- Global alliances – valuable partnerships with the world's leading vendors

## About IBM

### This is IBM in the UK

We have worked together with organisations in the UK for over 100 years, with a rich history of joint innovation and achievements, built on trusted relationships.



#### Cloud

Together, IBM and Red Hat are working to deliver the world's only **next-generation hybrid multicloud platform**



#### Economy

IBM has been **integral to the UK economy for >100 years**, and is one of its largest tech employers



#### R&D

In the UK alone, IBM **invests £170 million in R&D** each year



#### Quantum

IBM Q, the world's most advanced quantum computing initiative for commercial use, is being used by CERN



#### Environment

IBM's **focus on sustainability** began in 1971 with our first environmental policy



#### Changing the world

IBM was awarded **World Changing Company of the Year 2019** by Fast Company



#### Royal recognition

29 UK IBMers received **honours from the Queen** for contributions to tech and society



#### Diversity

IBM won the **Global Diversity Award 2019** and the ENEI's **Gold Standard**



#### Graduates

IBM is committed to developing future talent – we are Target Jobs' **Graduate Employer of the Year 2019**



#### Volunteering

IBM dedicates **>20,000 volunteering hours every year** for a better society



#### Tech talent

IBM runs P-TECH schools in 18 countries, helping **>100,000 students build skills for careers of the future**



#### Inventors

IBM UK is home to many Master Inventors, with **>250 patents filed last year alone**



## **We are Here to Help**

This document provides an overview of our service with context about how our services can support you and how we work. You can also find out more about us and our work at [ibm.com](https://www.ibm.com).

However, every organisation faces unique challenges and our specialists are available to answer your questions and discuss how our services can be tailored to your needs. You can reach us by email, and we are here to help.

Anne-Marie Wheeler

[ukcat@uk.ibm.com](mailto:ukcat@uk.ibm.com)

[www.ibm.com](https://www.ibm.com)