



G-Cloud 14 Service Definition

Accenture Security Strategy & Risk Services

May 2024

accenture

Contents

1. Scope of our Services3

2. Approach7

3. Assets and Tools8

4. Expected Outcomes9

5. Pricing10

6. Contacts 11

7. About Accenture12

1. Scope of our Services

Accenture offer end-to-end security strategy and risk services. This allows clients to tap into the unmatched experience of our global security strategists who will assess risks and help clients protect their valuable assets. Our services result in a business-driven, risk-focused security strategy, operating model and compliance plan that is aligned with each clients' unique business needs.



1. Security Advisory Services for Boards & Executives

It is critical for Boards to advance their journey by proactively managing cybersecurity risks. The CxO/Board's cybersecurity journey aims to achieve a competitive edge for our clients by improving brand reputation, profitability, security ROI and developing a corporate security culture. To gain such deep insights Accenture will utilise its 7 Domain Diagnostic tool.

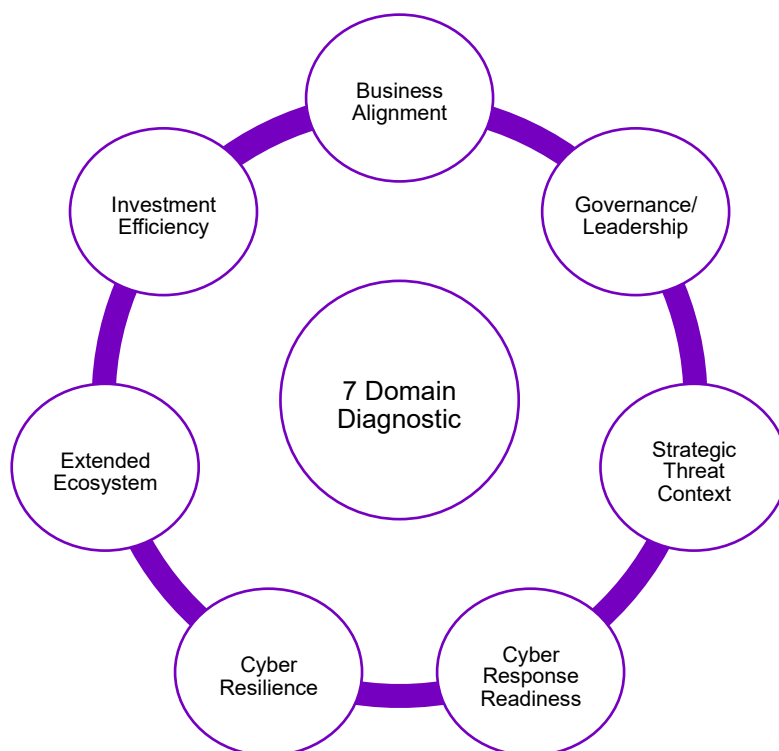


Figure 1: 7 Domain Diagnostic Tool 2. Cybersecurity Strategy & Operating Model Development

Accenture has vast experience in delivering security target operating models in complex organisations; allowing clients to accelerate their organisational change in an accelerated and secure manner. The following diagram provides a high-level overview of the key components the security target operating model will encompass.

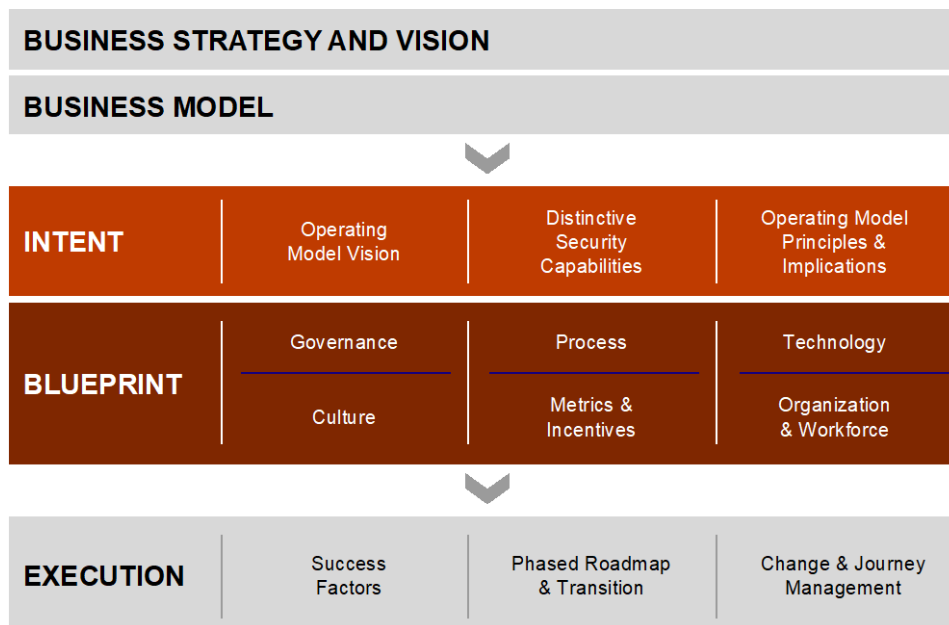


Figure 2: Transformation Methodology

3. Security for M&A

Accenture assists clients during mergers and acquisitions by focusing on areas where the risk may be increased due to the organisational change occurring. This can include for example Business Continuity and Disaster Recovery plans. The key activities which are typically undertaken are illustrated below per the M&A phase:

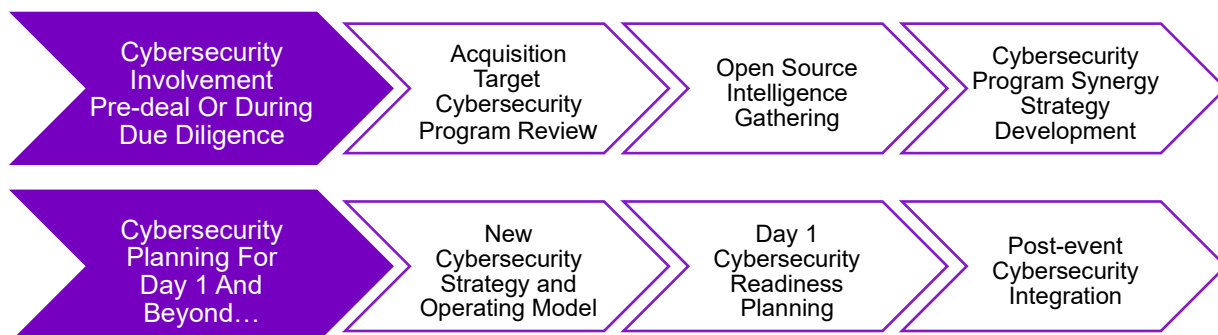


Figure 3: Cybersecurity Involvement

4. Governance Risk & Compliance

Our deep expertise across the service offerings and our business alliance with leading GRC software vendors support our holistic and strategic approach to GRC program execution, in 3 main areas:

- Curated Skills** – We have deeply skilled team members drawn from our Strategy, Risk, Technology and Security practices
 - Experienced advisors and researched point of views to help our clients take an informed decision in the right direction
 - Global footprint, including certified offshore resources located in our Global Delivery Network (GDN) locations can provide around the clock development and testing services
- Proven Experience** – The ability to deliver comprehensive solutions for our clients, based on industry experience and insights

- Extensive experience in executing the end-to-end solution from Strategic services and technology implementation through managed operations which include GRC software administration and functional risk assessment and compliance testing services
 - We provide functional GRC managed services including risk assessments, compliance testing, and remediation work across geographies and industries
- c. Global Accenture And Partner Alliance – Strategic business alliance that is focused on delivering high performance GRC solution to Accenture clients
- Privileged insight into GRC software vendors' market strategy and product development roadmap so we can advise our clients on their future planning
 - Ready access to partner's presales, technical, installation and training teams for support during projects



Figure 4: GRC Capabilities

5. Business Continuity & Cyber Resilience

Accenture can help clients enable business resilience through a unified approach and operating model, bringing all necessary functions together for true resilience. The methodology deployed by Accenture will ensure that the Business Continuity & Cyber Resilience program aligns with organisational needs and strategies to transform business resilience through integrated planning and response.

Accenture's Business Continuity & Cyber Resilience approach is built on the pillars illustrated in the following diagram:

BUSINESS RESILIENCE

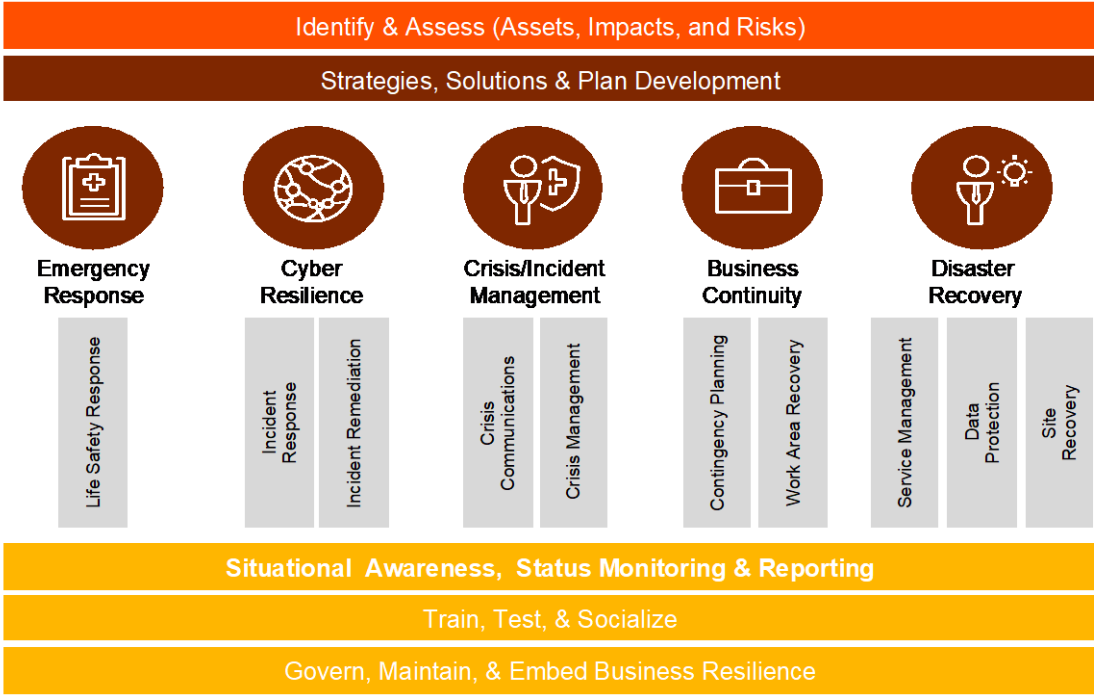


Figure 5: Governance and Delivery

2. Approach

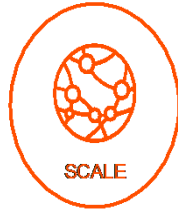
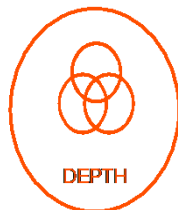
Working collaboratively Accenture puts innovation at the core of all solutions, whilst working in an agile manner to be able to respond adequately to the varying nature of client engagements.

OUR BROAD SECURITY ECOSYSTEM

- There is no single cyber-security "silver-bullet"
- Collaboration is key. We invest in market-leading solutions globally through V&A e.g.: FusionX, Splunk, Tanium, Forgerock, Endgame, Arismore to provide world-class cyber-security
- In a market of scarce security talent, we have over 5000 highly-skilled specialised professionals on demand

MARKET LEADING – GARTNER

- We are the only company in the world that has the global presence, commitment to innovation, unmatched industry know-how and the business strategy acumen to solve security challenges for our clients as well as the expertise to operate what we implement for our clients
- We can undertake a strategic review and security maturity assessment, make recommendations, implement them and then run the service



OUR DEEP Health & Public Sector INDUSTRY INSIGHT

- We have worked with governments globally to implement tailored security solutions across departments and organisations;
- We have strong collaboration with national defence and intelligence agencies

OUR GLOBAL SCALE AND H&PS DELIVERY

- Our global, cross-industry reach allows us to see and respond to emerging threats faster and bring the best to our H&PS clients
- Our growing-number of cyber-fusion centres (Washington, Houston, Tel-Aviv, Prague, Bangalore) allow us to provide a range of onshore, near-shore and offshore options

Figure 6: Innovation at the Core

3. Assets and Tools

1. Our services are supported by several assets and tools which are utilised for the strategy and risk offerings. By utilising such tools, we can accelerate delivery, help clients deliver better outcomes, more rapidly, more consistently, enabling them to benefit from the global experience Accenture can bring.
2. Our methods and tools can clients identify; security risks and vulnerabilities, develop the necessary strategy and implement the right road map to ensure clients are moving in the right direction securely and safely.
3. In addition, to the high-level industry frameworks, an overarching holistic view can be robustly obtained by the deployment of the Accenture 'Capability Assessment Portal' (CAP). This provides a one-stop shop for assessing an organisation's cybersecurity capabilities and maturity against latest government and industry specific regulations, standards, and frameworks. Examples of assessments available via CAP are as follows:

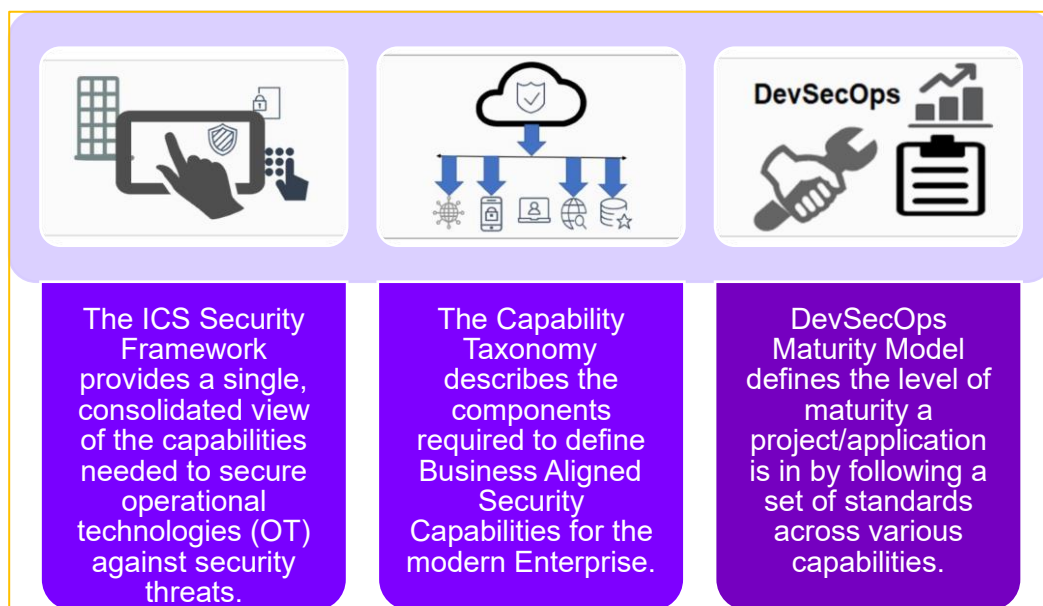


Figure 7: CAP Portal

4. Expected Outcomes

The following table summaries the key outcomes for each the offerings described above.

Area	Key Outcome
Board Advisory (7 Domain)	<ul style="list-style-type: none">• Understanding of cybersecurity capabilities across seven domains, contextualised against industry and geography peers• Recommendations and roadmap for programme improvement• Board and risk committee cybersecurity advisory• Executive leadership cybersecurity workshops
Operating Model	<ul style="list-style-type: none">• Formal development of an enterprise cybersecurity strategy• Definition / update of cybersecurity operating model based on business strategy• Cybersecurity program metrics and dashboard development• Cybersecurity tool inventory and rationalisation strategy• Development of the change management program to assimilate updates• Program management for the implementation of the new operating model across the enterprise
Security for M&A	<ul style="list-style-type: none">• Robust risk assessment covering the IT infrastructure estate• Ensure compliance with all relevant regulations
Governance Risk & Compliance	<ul style="list-style-type: none">• Ability to globally manage the GRC program and ensure synchronisation between information and activities• Oversight and management of the overall security, risk management, and compliance program• Identification and classification of risks to the business, and the actions needed to mitigate those risks• Identification and management of applicable laws, regulations, and policies to ensure compliance• Evaluate and implement enterprise wide GRC tools
Business Continuity & Cyber Resilience	<ul style="list-style-type: none">• Assess existing business resilience capabilities• Design and implement a resilience operating model• Test and Maintain resilience capabilities

5. Pricing

Please refer to the associated Pricing Document relevant for this Service.

6. Contacts

Sarita Sudera

(Accenture Health & Public Services – Sales Lead)

Email: UK.TenderMonitoring@accenture.com

Telephone: +44 7815 100009

7. About Accenture

Accenture is a leading global professional services company that helps clients build their digital core, transform their operations, and accelerate revenue growth - creating tangible value across their enterprises at speed and scale. We are uniquely able to create these outcomes because of our broad range of services in strategy and consulting, interactive, technology and operations, with digital capabilities across all of these services. We combine unmatched industry experience and specialised capabilities across more than 40 industries and all business functions. With 730,000 people serving clients in more than 120 countries, and a net revenue of \$64.1 billion USD for the financial year ending on 31st August 2023, Accenture drives innovation to improve the way the world works and lives.

Copyright © 2024 Accenture
All rights reserved.

Accenture, its logo, and
High Performance Delivered
are trademarks of Accenture.