



G-Cloud 14 Service definition document

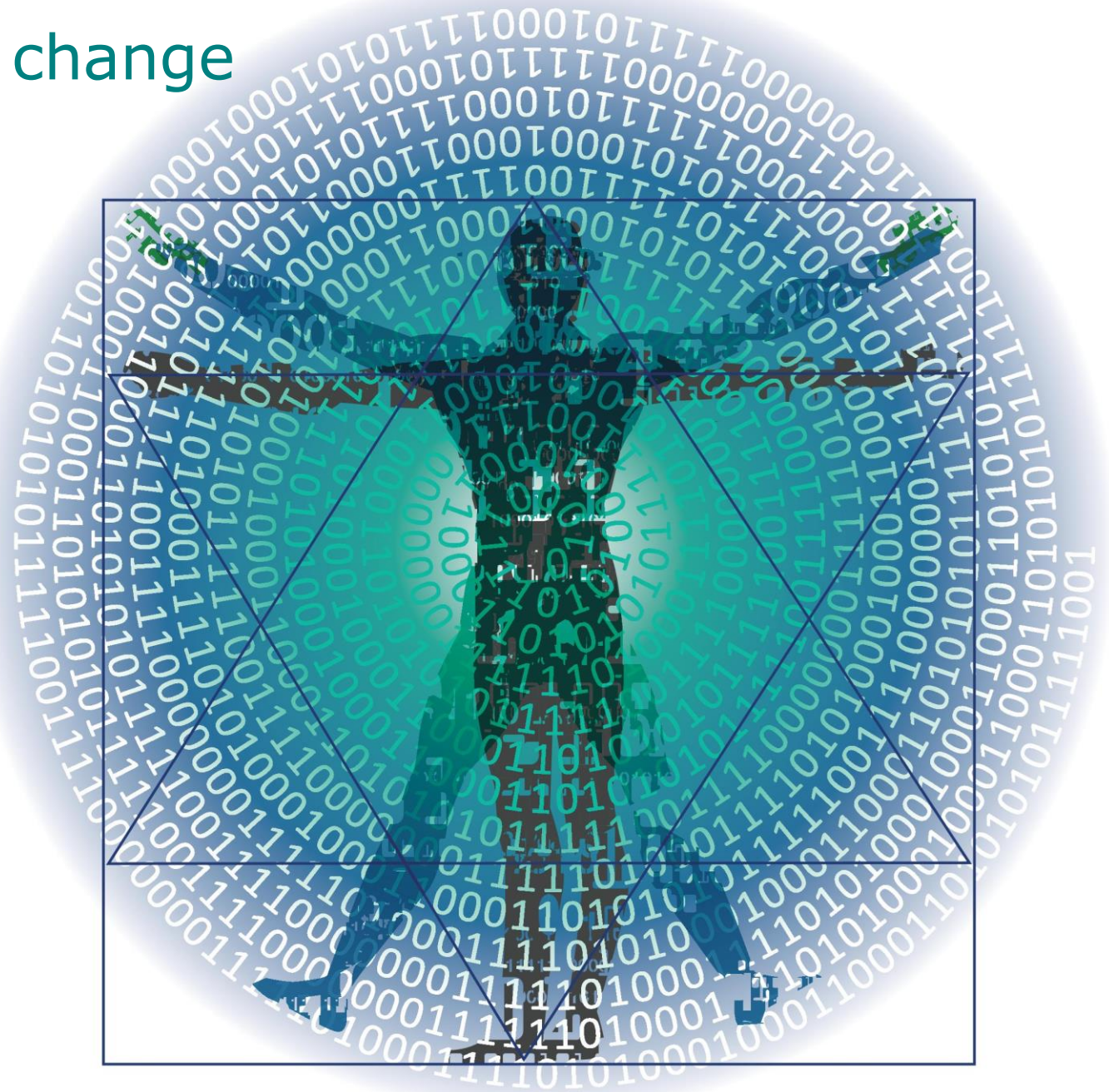


Community, collaboration, change

Our Mission:

To accelerate a transition to highly successful projects and enable the UK with dramatic productivity gains.

At our core, we provide a scalable solution ensuring Nobel Prize-winning and leading institute ideas are applied consistently via our Confluency Standard.





What we do

Confluity services are designed to be scaled and ensure the research proven success factors for projects and change are addressed, consistently.

All services and those who provide them apply the Confluity Standard. With this and the Confluity Resourcing Service, we provide quality resources, with speed and confidence in more successful outcomes.



Empowered leaders



Apply learning to do the right things, in the best way.



Address the rules of thumb that affect how humans work, like optimism bias.



Teams that foster positive change.



Underlying success factors for projects and change.



Key messages



Public Sector Service:
Access to experienced resources, UK wide.



Outcomes Focus:
The Confluency mission is to elevate societal project performance, successful projects and change is our purpose.



Experience Reach:
Confluency connects networks of leading thinkers and practitioners, meaning our candidates have access to continuous support and insights.



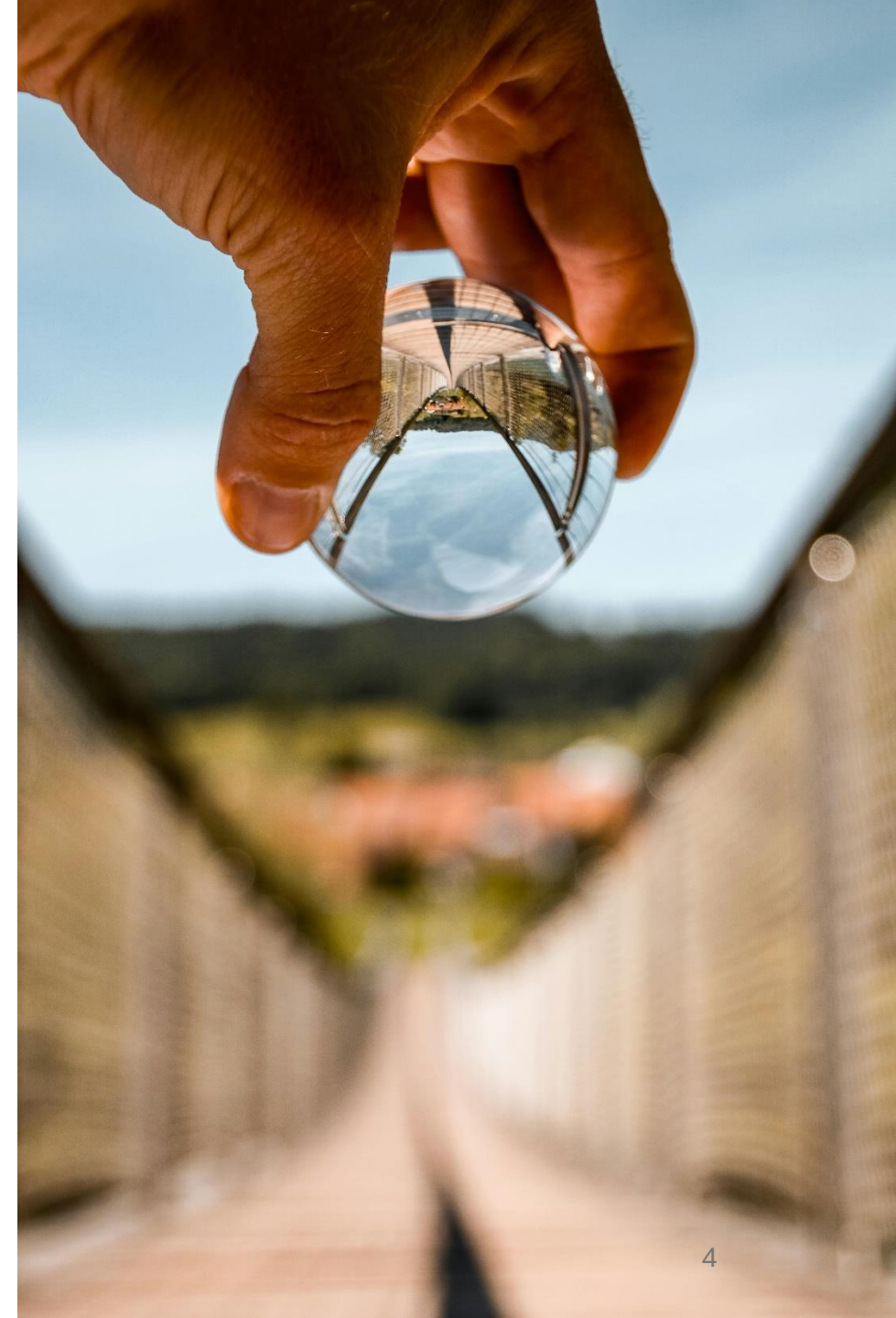
Flexibility & Scalability:
Confluency Resourcing Services scale to demand, adhering to Confluency Standard, ensuring consistent project success application



Innovative Data & Tooling:
Nobel prize and leading university inspired tools, data and training to address the underlying factors for project success, enhancing estimates by 30-50%.

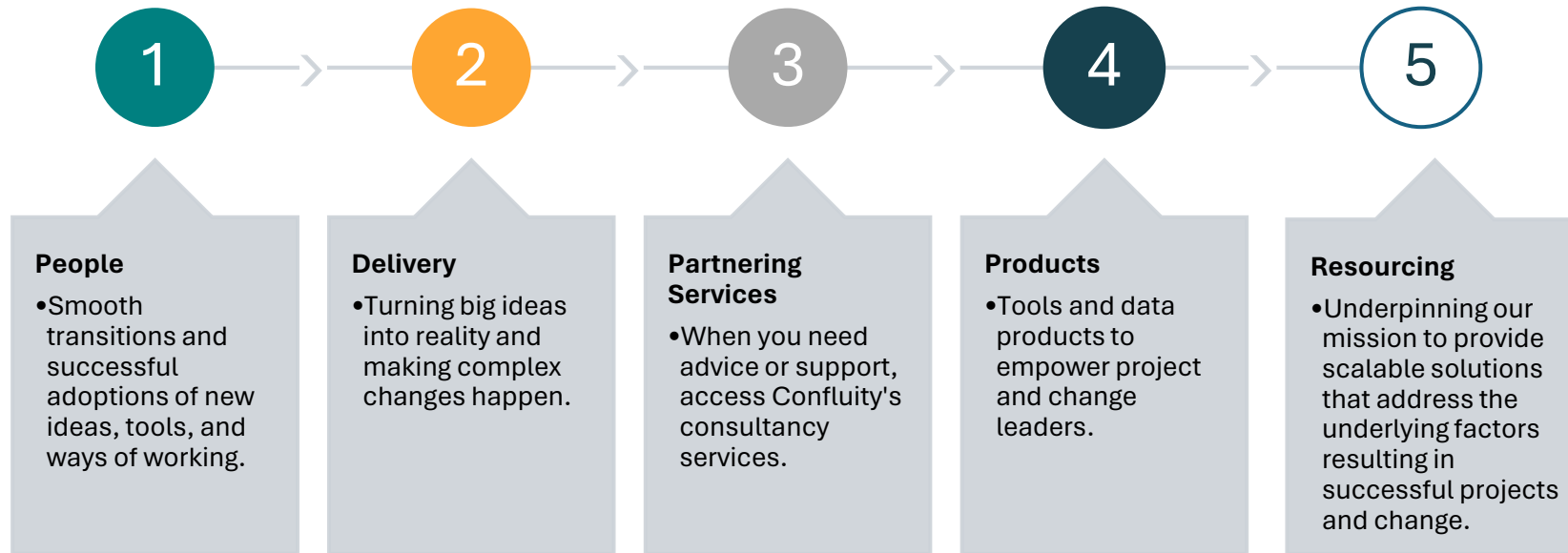


Confluency Standard benefits:
Can boost quality performance by 24%, increase customer satisfaction by 20%, decrease risk factors by 50%, boost efficiency by 58%, improve strategic alignment by 60%



G-Cloud 14: Navigating Confluency Services

Our services fall under five core areas





G-Cloud 14 Services

Change Management and Transformation

Service Overview

Change management and transformation are core services. Confluency was founded in 2023 to advance successful projects. Enabling change through the Confluency Standard.

Change management and transformation reimagined with Nobel Prize-winning and top institute ideas. Confluency delivers cloud, digital, cybersecurity and software change leadership across central government, defence, and infrastructure.

Features

- Data enabled change management, transition management stakeholder sentiment analysis.
- Proven change management and transformation, PROSCI, Kotter, IMA.
- Agile, change and general coaching and mentoring, all levels.
- Value proposition and business case development, benefits management.
- Experienced change managers, stakeholder, communications and transformation resources.
- Digital transformation, agile transformation, lean transformation, HR transformation.
- Digital, cloud, cybersecurity, and infrastructure. Local, Central Government and NGO.
- IT operating model design, blueprint, business analysis, process mapping.
- GDS, NCSC, ITIL, ITSM compliant delivery, across disaggregated multi-sourcing environments.
- Organisational change and value creation through strategic planning and transformation.

Benefits

- The Confluency Standard by design transforms change management performance.
- Confluency techniques increase project success rates above industry averages.
- Reduces 80% risk of not achieving intended benefit outcomes.
- Advanced data enabled stakeholder sentiment analysis, boosts situation awareness.
- Benefits of increased capability-maturity over average performing suppliers:
- Agile value proposition prioritisation enables rapid release of value/benefits.
- Increases customer satisfaction by 20% with value led change management
- Stakeholder analytics assists reduction in success risk factors by 50%.
- Confluency Standard and Resourcing services enable scalable change management.
- Strategy delivery transformation, supports 60% improvement in objective alignment.

People services

Public Sector Service

Experience Reach

Innovative Data & Tooling

Outcomes Focus

Flexibility & Scalability

Confluency Standard Benefits



Public Sector

Our people have delivered for public sector.

Selection of our customers where we have delivered transformation, change, project delivery.



Ministry
of Defence



Association for
Project Management



Strategic Command
Defence Digital



UK Health
Security
Agency



UK Research
and Innovation



Private Sector

Our people have delivered for private sector.

Selection of our customers where we have delivered transformation, change and project delivery across cybersecurity, cloud, digital and software.



EVERCORE





ONBOARDING & OFFBOARDING

Thorough Requirement Analysis:

Confluency engages with clients to understand project requirements, ensuring we assign appropriately skilled resources committed to diversity and economic equality.

Sustain Team Engagement:

We maintain a consistent team throughout the project to ensure timely and quality outputs, supporting work-life balance and flexible working arrangements. Building client capability to transition from Confluency services is at the core of our mission.

Innovative Collaboration:

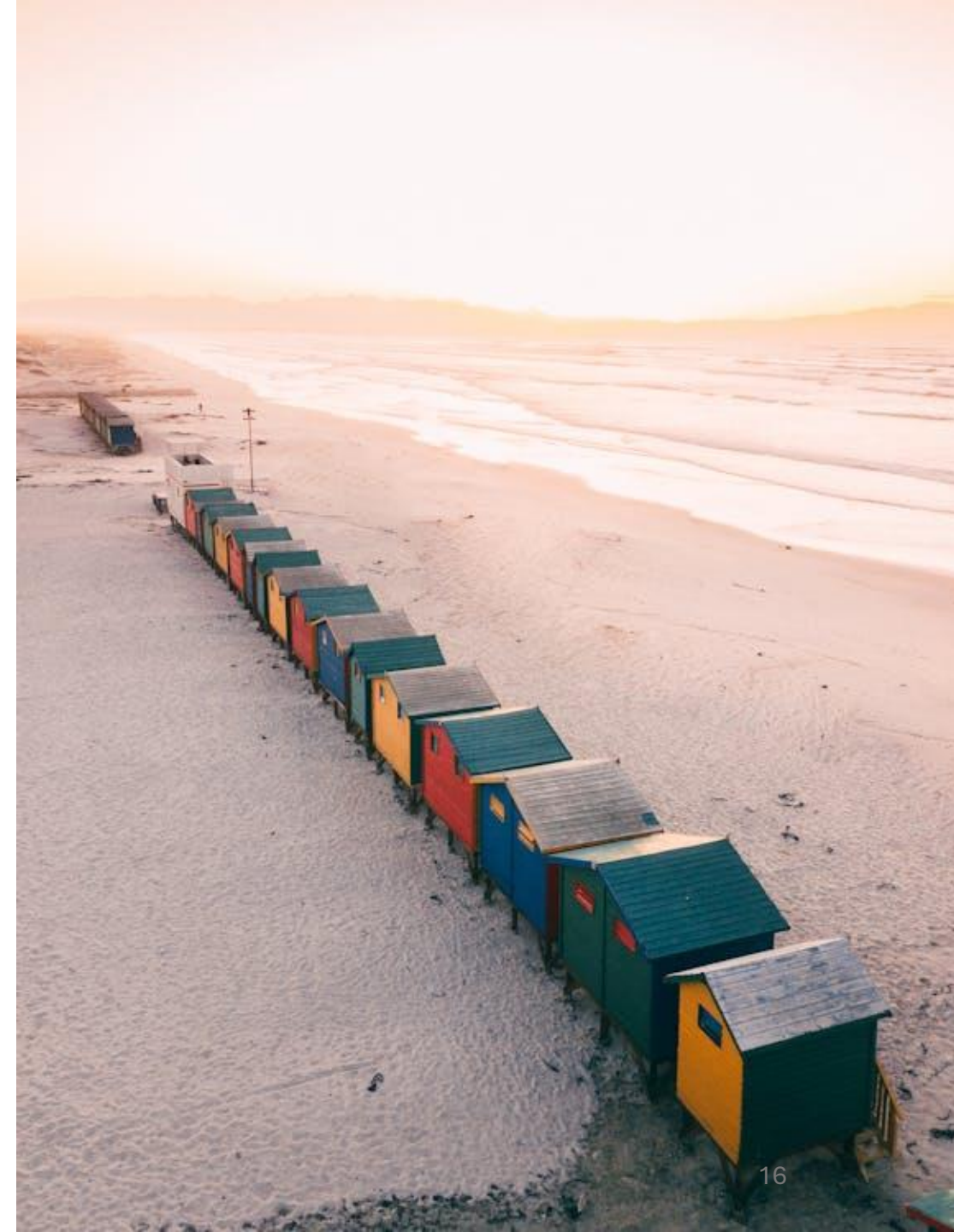
Our approach combines innovative methods with proven practices to deliver both cost-effective and impactful solutions. We aim to leave our clients in a better place than when we started.

Define Project Scope Clearly:

We clearly define project deliverables, timelines, and quality expectations while considering social and environmental impacts to meet and exceed client expectations.

Flexible Project Agreements:

Confluency offers flexible engagement models, allowing for iterative reviews and adjustments to the Services Agreement to align with client goals and objectives.



Contact Details

The principal point of contact for this service is:

Martin Pressinger

BD@Confluity.co.uk

07494 646 948



5 Brayford Square, London, England, E1 0SG