

cority

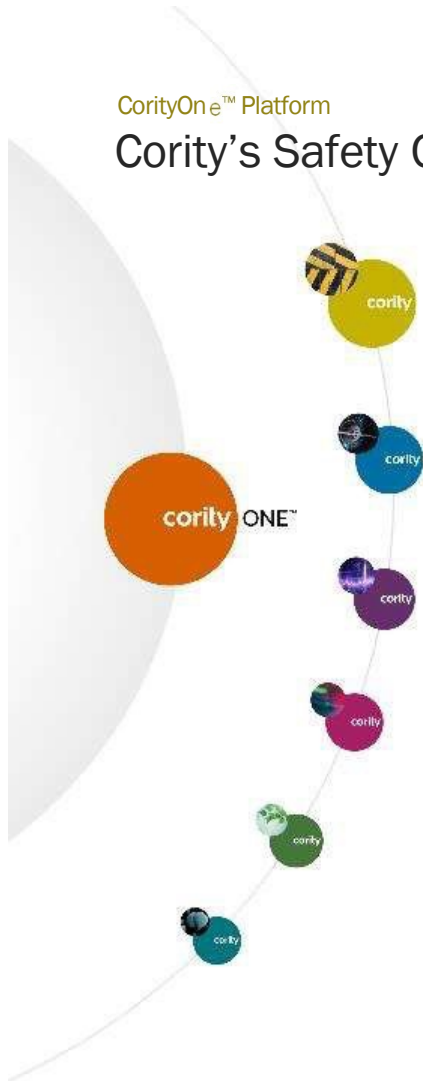
# Safety Cloud

*empower better prevention*



CorityOne™ Platform

## Cority's Safety Cloud



Designed to manage workplace and workforce safety and compliance programs to enable better prediction and prevention to stay ahead of risk.

### Recognized Leaders

# 500+

Global clients

### Expert Driven

*"For the last 3 years since we implemented Cority, we've been driving our recordable rate down. Last year, it was the lowest in company history..."*

**Robert Spencer**  
Sr. Program Manager,  
Tennessee Valley Authority.

### Unified Platform



Engaging, personalized  
mobile experiences - #1  
Mobile Solution 2021  
Verdantix GQ

### Solutions

- Audits & Inspections
- Compliance Management
- Contractor Safety Management
- Incident Management
- Learning Management
- Management of Change
- Mobile Solutions
- Risk Management
- Safety Essentials



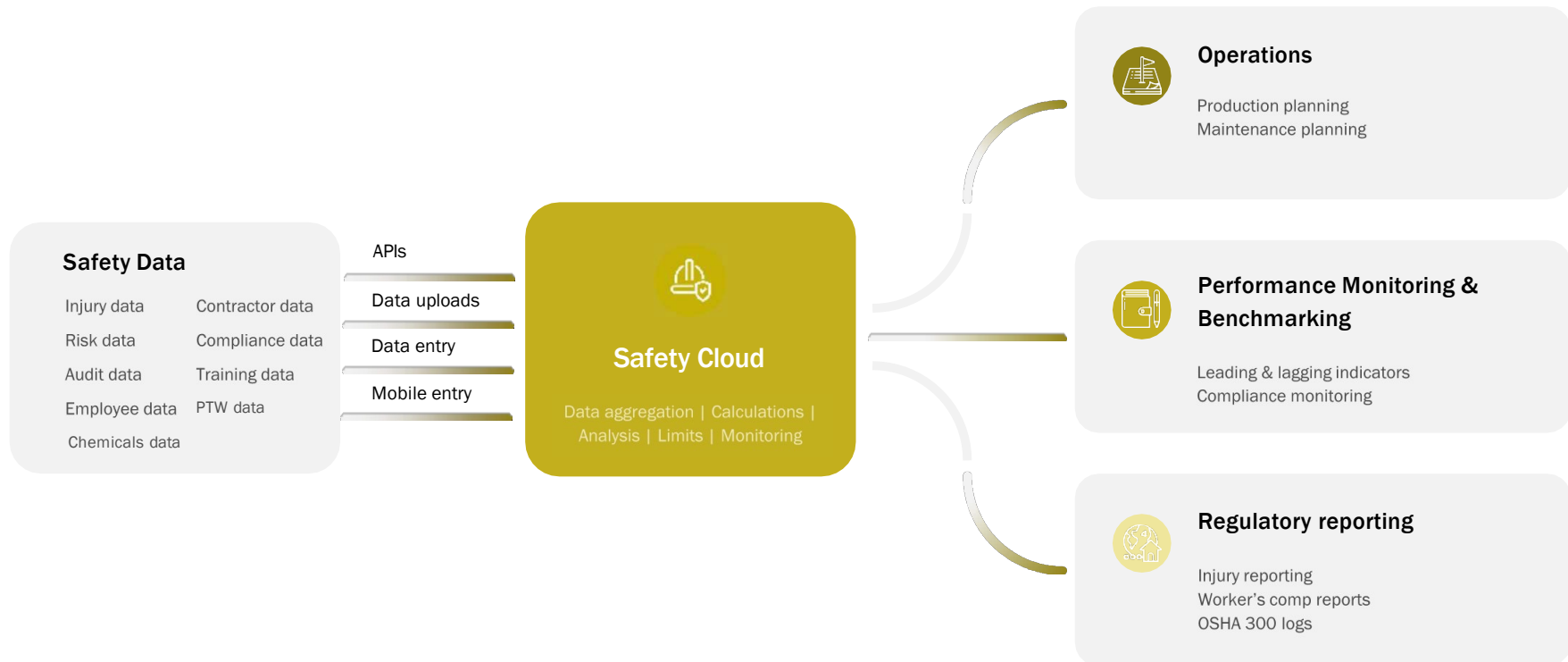
Where is your organization going?

## Key challenges



The evolution of best practice

## Safety data management





# Safety Cloud Solutions



## Key Benefits

# Protecting what matters most



### Gain Visibility

Get a complete picture of your risk burden, action status and overall safety performance



### Drive Improvement

Create a culture of safety where all stakeholders provide input, share responsibilities & take ownership



### Ensure Compliance

Ensure end-to-end regulatory compliance in a single unified configurable platform



### Reduce Risk

Reduce the risk of harm, legal non-compliance & reputational damage with increased transparency



Cority Safety Cloud

## Why Cority Safety Cloud is different



### **Designed by experts for experts**

Solutions designed, developed and supported by HSE experts who have walked in your shoes



### **Human-centric approach**

We put targeted, holistic and actionable insights in the hands of people to help them create safety in real-time



### **Truly mobile-first to drive engagement**

Offering the most expansive EHS feature set available on a single mobile application



### **Most complete 360° view of risk**

Integrated platform that helps link safety to other domains, providing a view of EHS&S risk like never before



### **Transforms data into insights**

The most advanced business intelligence & analytics to uncover insights to drive better decisions



Cority Safety Cloud

## Audits & Inspections

Help your EHS professionals manage all aspects of health and safety auditing, including scheduling, reporting, and managing associated corrective actions.

### Key Features

- ✓ Highly configurable audit planning tools
- ✓ Pre-built and build-your-own checklists
- ✓ Automated scheduling, notification & tracking
- ✓ Integrated CAPA management
- ✓ Out-of-the-box reports & lessons learned
- ✓ Interactive advanced dashboards

### Benefits

- ✓ Centralized control
- ✓ More streamlined operations
- ✓ Greater employee engagement
- ✓ Easier compliance
- ✓ Unparalleled insights



*"Cority helped us harmonize [our audit systems]. Everyone is now using the same process. Having everything on a single screen makes it easy to navigate and that made a big difference in terms of gaining buy-in."*

**Jay McLeod, Specialist, HR Solutions**  
Sobeys Inc.

Cority Safety Cloud

## Compliance Management

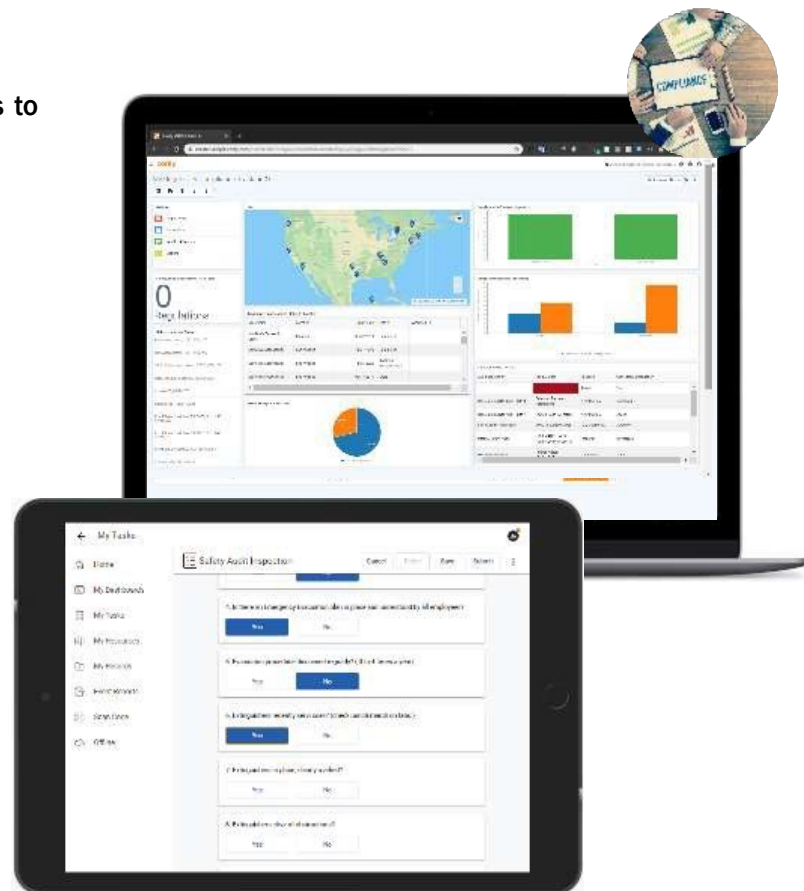
Leverage advanced features and integrations with external content providers to take the worry out of maintaining compliance to any regulatory standard or corporate requirement.

### Key Features

- ✓ Easily assess regulation applicability
- ✓ Maintain accurate regulatory registers
- ✓ Manage permits in a single location
- ✓ Easily monitor compliance status
- ✓ Record & monitor stakeholder communications

### Benefits

- ✓ More holistic 360° view
- ✓ Proactive management
- ✓ Better performance & accountability
- ✓ Integrated with other solutions



Cority Safety Cloud

## Contractor Safety Management



Gain enhanced clarity into the entire contractor safety lifecycle, from pre-qualification through post-job review, in a single unified solution, to manage the impact that external parties may have on your safety performance.

### Key Features

- ✓ Streamline contractor prequalification
- ✓ Manage contractors like your own employees
- ✓ Validate contractor training and certification in real-time
- ✓ Oversee contractors on multiple projects at once
- ✓ Evaluate performance before awarding new contracts

### Benefits

- ✓ Greater risk & performance visibility
- ✓ Standardized processes
- ✓ Improved compliance
- ✓ Better insights



Cority Safety Cloud

## Incident Management

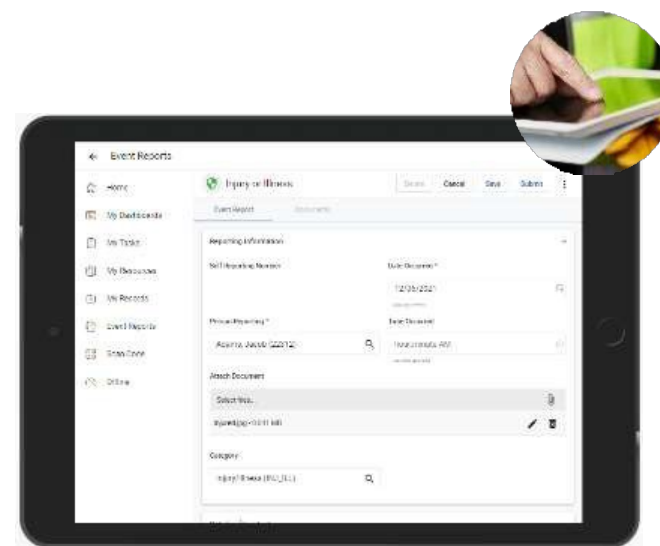
Leverage your collected data to create the most accurate picture of what happened, how and why, enabling your organization to take intelligent action to prevent recurrence and keep your workforce safe & productive.

### Key Features

- ✓ Report & investigate events right from your mobile device<sup>†</sup>
- ✓ Configure workflows based on incident type, severity, or other criteria
- ✓ Create automated notification and escalation paths
- ✓ Multiple root cause analysis tools
- ✓ Auto-populated reports to regulators
- ✓ Powerful business intelligence & analytics tools

### Benefits

- ✓ Better visibility
- ✓ Precise root cause analysis
- ✓ Enhanced compliance
- ✓ More intelligent decision-making
- ✓ Stronger EHS culture



<sup>†</sup> including when offline

Cority Safety Cloud

## Learning Management

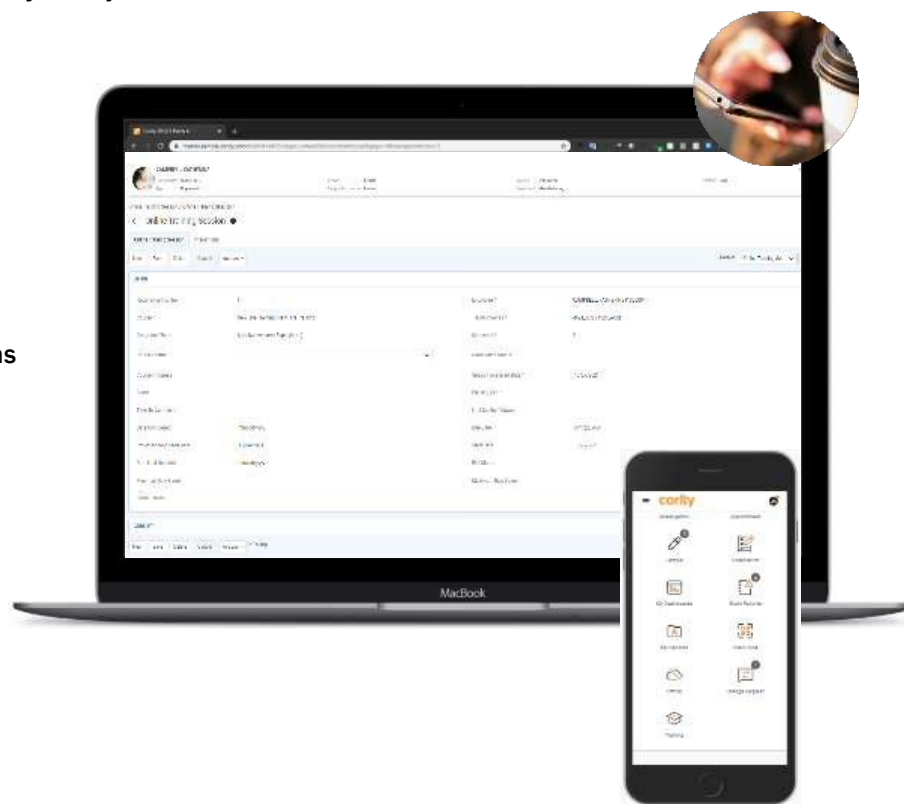
Putting the employee at the center of the EHS learning & development journey

### Key Features

- ✓ Automate training enrollment
- ✓ Create libraries of online content for any EHS topic
- ✓ Group training courses to create learning paths
- ✓ Consume training right from your mobile device
- ✓ Monitor training status in real-time to maintain compliance

### Benefits

- ✓ Better engagement
- ✓ Stronger compliance
- ✓ Lower administration
- ✓ More streamlined operations
- ✓ Actionable insights



Cority Safety Cloud

## Management of Change

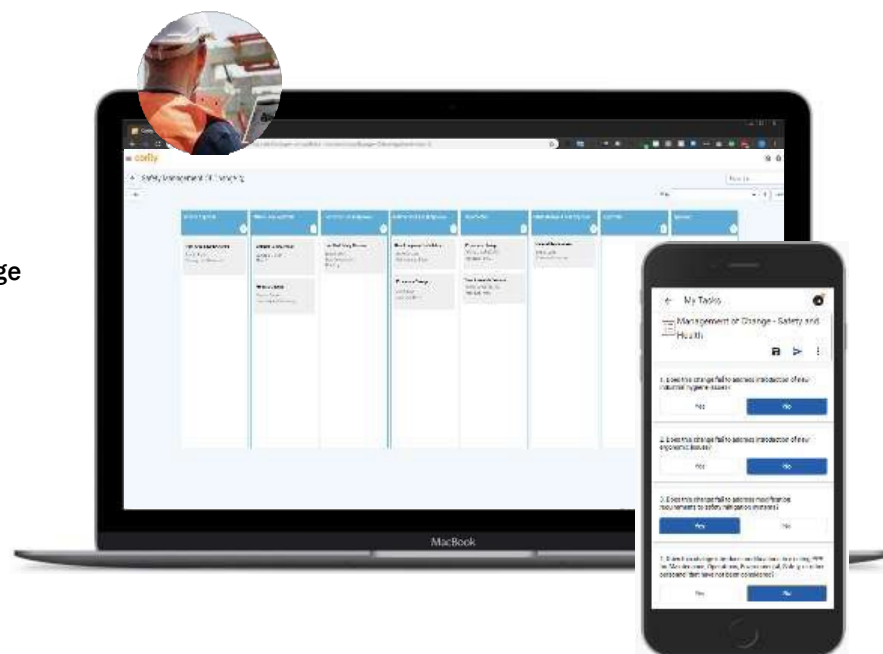
Providing organizations with the ability to proactively identify, evaluate and adjust key operational areas impacted by change before they can result in loss

### Key Features

- ✓ Manage multiple change types in a single application
- ✓ Initiate change requests from any device, anywhere, anytime
- ✓ Easily visualize change status and next actions at-a-glance
- ✓ Proactively address risks and compliance concerns

### Benefits

- ✓ Reduced effort
- ✓ Stronger process control
- ✓ Better engagement in change management
- ✓ Improved change oversight
- ✓ Continuous improvement



Cority Safety Cloud

## Mobile Solutions

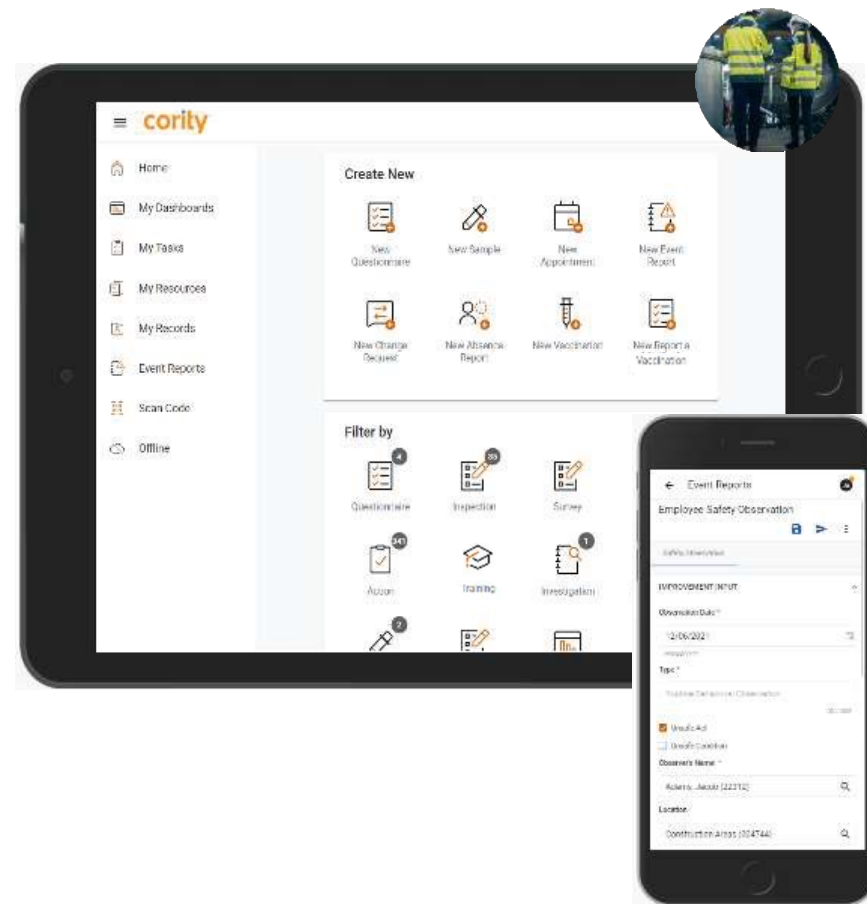
Offering the largest EHS feature set available in a single mobile app to help you engage your employees in your safety program, control risk, build stronger culture, and deliver better results

### Key Features

- ✓ Largest mobile feature set to support EHS use cases
- ✓ Ability to engage in language of choice
- ✓ Personalized experience tailored to each user's needs
- ✓ Offline capabilities to support tasks wherever you are
- ✓ No need to download apps or updates

### Benefits

- ✓ Enhanced decision-making
- ✓ Heightened compliance
- ✓ Stronger engagement
- ✓ Rapid deployment & adoption
- ✓ Greater efficiency



Cority Safety Cloud

## Permit to Work

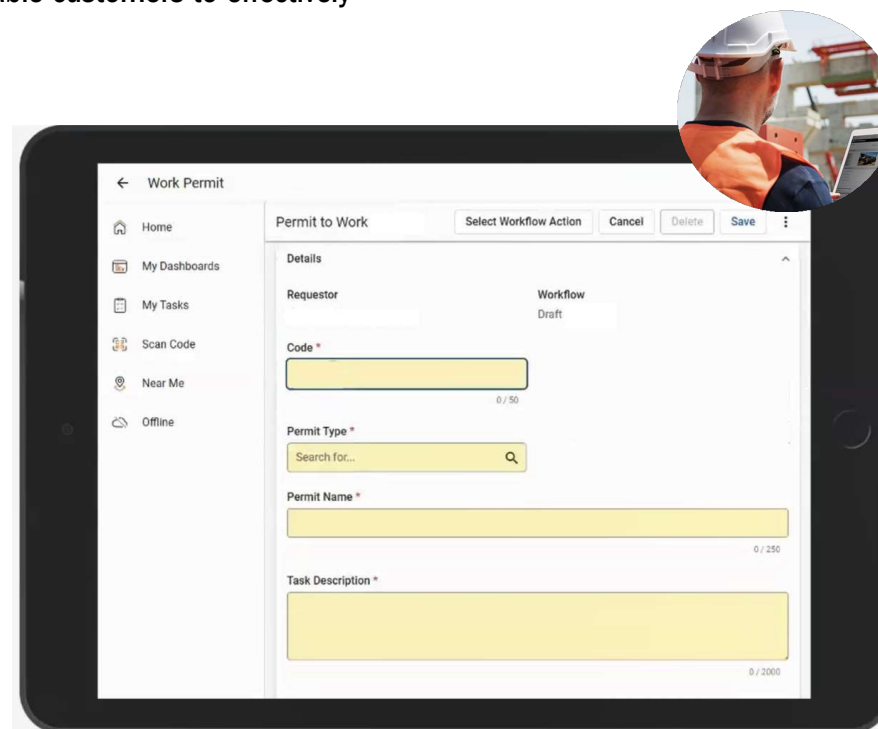
A standalone, mobile-enabled solution offering comprehensive, end-to-end Permit to Work lifecycle management, complete with expert-designed tools to enable customers to effectively manage any permit to work scenario they encounter.

### Key Features

- ✓ Out-of-the-box mobile-enabled PTW templates
- ✓ Barcode triggered PTW requests
- ✓ Configurable approval workflows
- ✓ Real-time permit location and status tracking
- ✓ CorityOne integration
- ✓ Advanced business intelligence

### Benefits

- ✓ Improved risk visibility
- ✓ Enhanced compliance
- ✓ Stronger workforce engagement
- ✓ Serious event prevention
- ✓ Increased efficiency



The image shows a tablet displaying the 'Work Permit' application interface. The screen is titled 'Work Permit' and has a navigation menu on the left with options: Home, My Dashboards, My Tasks, Scan Code, Near Me, and Offline. The main form area is titled 'Permit to Work' and includes a 'Select Workflow Action' button, 'Cancel', 'Delete', and 'Save' buttons. The form fields are: Requestor (text input), Workflow (dropdown menu showing 'Draft'), Code \* (text input with a 0/50 character limit), Permit Type \* (searchable dropdown with a 'Search for...' prompt), Permit Name \* (text input with a 0/250 character limit), and Task Description \* (text input with a 0/2000 character limit). A circular inset image in the top right corner shows a worker in an orange safety vest and white hard hat looking at a tablet.

Cority Safety Cloud

## Risk Management

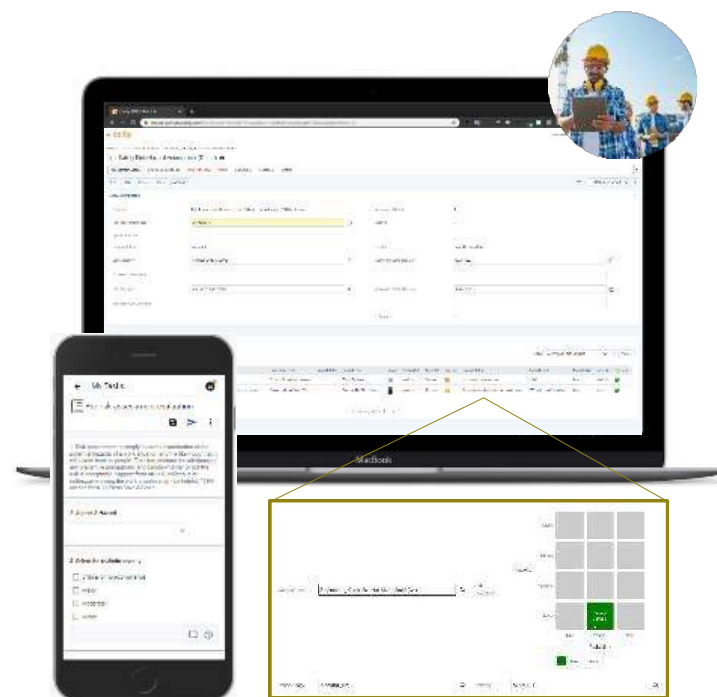
One comprehensive solution to simplify, standardize, and streamline risk assessment practices providing leaders with greater real-time visibility on where risk exists within the business

### Key Features

- ✓ Easily create task inventories
- ✓ Leverage best-practice risk methodologies or design your own
- ✓ Calculate risk scores in a snap with configurable risk calculators and a clickable risk matrix
- ✓ Determine control effectiveness in just a few clicks
- ✓ Easily track risk data, benchmark performance and drive accountability.

### Benefits

- ✓ Increased efficiency
- ✓ Improved risk prioritization
- ✓ Better risk mitigation
- ✓ Stronger compliance
- ✓ Enhanced organizational learning



Cority Safety Cloud

## Safety Essentials - Package

Cority Safety Essentials is designed to make safety management simple.

### Key Features

- ✓ Mobile incident reporting
- ✓ Pre-configured workflows & simple RCA tools to simplify incident management
- ✓ Mobile-enabled compliance inspections & related activities
- ✓ Pre-built advanced dashboards & reports to monitor & benchmark performance
- ✓ Access to CorAnalytics to uncover insights and guide decision-making

### Benefits

- ✓ Simple & streamlined processes
- ✓ Better adoption and easier navigation
- ✓ Quick time-to-value and more immediate ROI
- ✓ Able to grow with your business



Cority Safety Cloud

## Chemicals Management

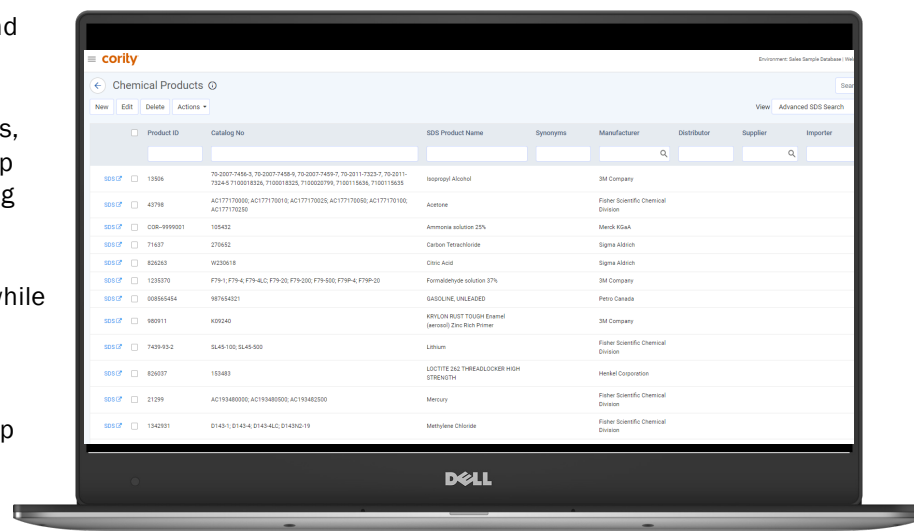
Cority Safety Essentials is designed to make safety management simple.

### Key Features

- ✓ SDS library management
- ✓ OOB dashboards for simple and efficient navigation
- ✓ Update of each document at a minimum of 2 Yrs
- ✓ Regulatory Lists: More that 60 regulatory lists maintained by Cority
- ✓ Public Links: Easy access to essential information by all employees
- ✓ Chemical Approvals (optional add on)
- ✓ Pre-screening feature to identify any ingredients on regulatory lists (customer entered lists and/or Cority managed lists)
- ✓ Pre-defined workflow

### Benefits

- ✓ Comply with local, national and international regulations
- ✓ Minimize your risk for penalties, protect your products and keep your workforce safe by knowing which chemicals are on site
- ✓ Cut material approval times while enabling approvals across departments
- ✓ Personnel have easy access tp critical information when and where they need it



# Safety Essentials Package Features



cority

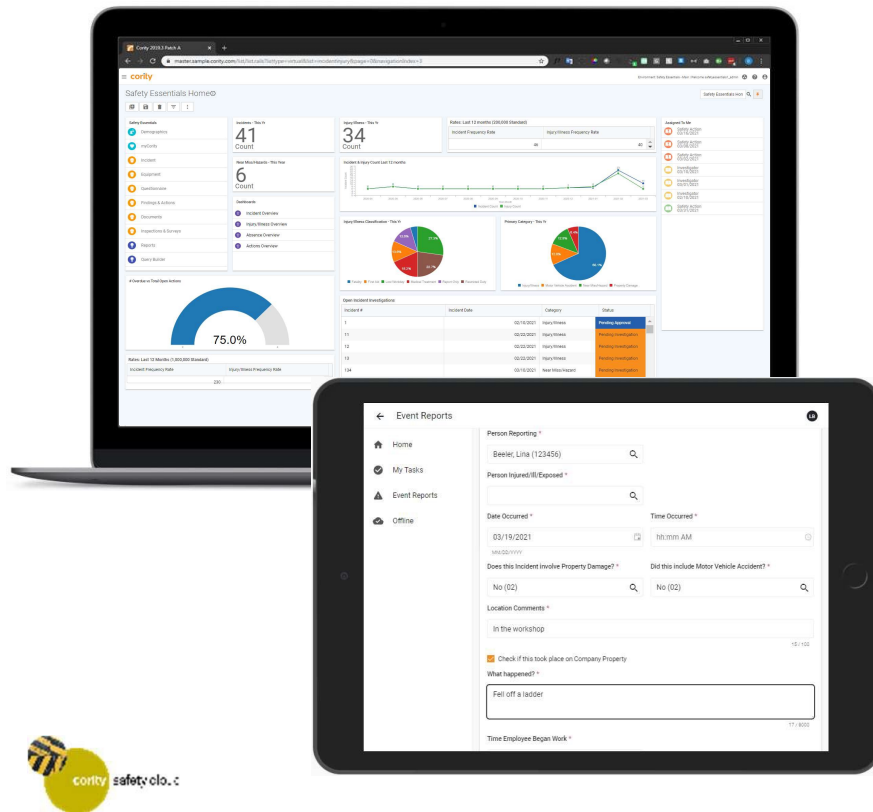
safety cloud

*empower better prevention*



cority safety cloud

# Product Features



## What you get with Safety Essentials

### 1. Incident Management

- Mobile incident reporting via myCority
- Pre-configured 1 or 2-level investigation workflows
- Simple RCA trees to streamline root cause

### 2. Inspections & Surveys

- 1 pre-built & 3 client-specific basic questionnaires
- Mobile inspections w/ myCority

### 3. Platform, BI & Analytics

- 5 pre-built advanced dashboards + supporting reports
- Access to CorAnalytics (light user only)

### 4. And More

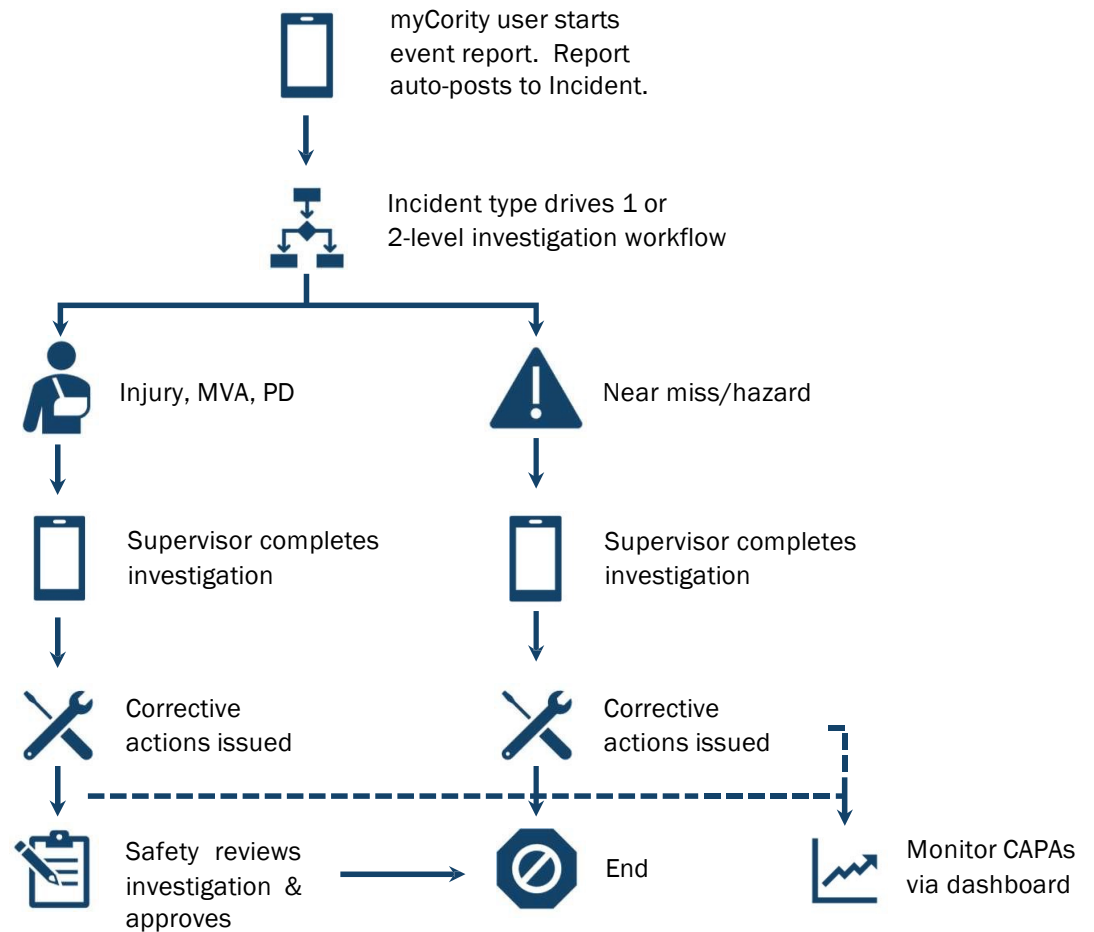
- 40+ pre-configured business rules to automate workflows and alerts



# Workflow

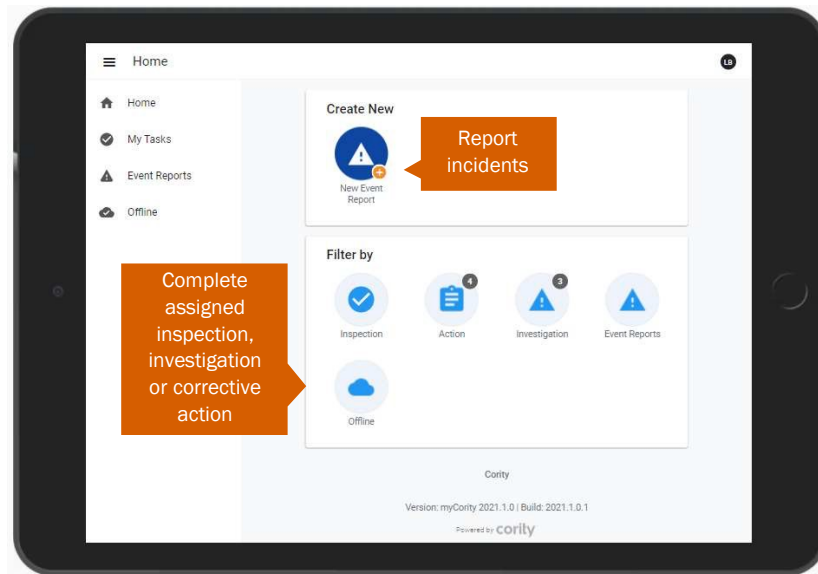
## Incident Management

1. Workflow starts with event report via myCority
2. Event type drives level of investigation required (2 options OOB)
  - Injury, MVA, Property Damage – 2 levels
  - Near Miss/Hazard – 1 level
3. Supervisor completes investigation in myCority. Simplified RCA.
4. Safety reviews / approves completed investigation in GX2
5. Data in module populates 5 dashboards and standard reports (OSHA 301A)

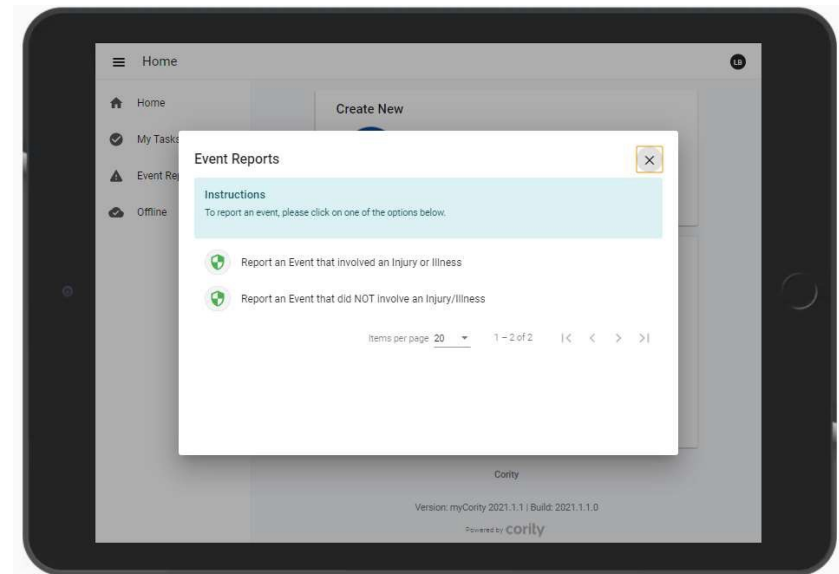


# Product Views

myCority



Simple myCority layout with only “essential” functions for front-line user



Two report options (injury or no injury)



# Product Views

myCority

Investigator

Incident

Incident Details

Incident #

Primary Incident Type

Incident Date \*

Reported Date

Incident Time \*

Reported Time

Did an Injury or Illness occur? \*

Did this include Motor Vehicle Accident? \*

Does this Incident Involve Property Damage? \*

Location Comments

Investigators can add information about the incident, injured parties, and initiate corrective actions right from their mobile device

My Tasks

Classifications

Client Defined LU1

Client Defined LU2

Client Defined LU3

Client Defined LU4

Client Defined LU5

Demographics

Root Cause

Primary Root Cause \*

Secondary Root Cause \*

PERSONAL FACTORS: Lack of knowledge/skill (e.g. new worker, new to work area) (PERSFAC\_03)

ACTIONS: Failure to wear PPE (ACT\_02)

Why Tree

hammer broke and flying object injured nearby employee

hammer was damaged prior to use

employee didn't complete pre-use inspection

employee was new and was not aware of the pre-use inspection process

Clients are provided with 5 "client-defined" fields configured during deployment

Clients can define root causes, with access to a dynamic Why-Tree tool



A simple yet comprehensive mobile-enabled investigation workflow



# Product Views

myCority

My Tasks

Home

My Tasks

Event Reports

Offline

Injury/Illness

Cancel Save

Tr Facility Zip

☐ Was employee treated in an emergency room? ☐ Was employee hospitalized overnight as an in-patient?

Physician Hospital

OSHA

☐ Illness ☒ Injury

Occupational Illness Type

☐ Skin Disorder

☐ Respiratory Condition

☐ Poisoning

☐ Hearing Loss

☐ All Other Illnesses

☐ Lose Consciousness ☐ Needlestick

☐ Privacy Case

Reporting Location

☐ OSHA Recordable ☐ Date Became Recordable

☐ Line Out on OSHA Log? ☐ Line Out Date

Add information relevant to reports for regulators



# Product Views

## Inspections

**cority**

Safety Audit Profile / Safety Audit Profile JHSC-MTG

← Inspections and Surveys

Inspections and Surveys Assignees/Recipients Completion/History Findings and Actions Documents

New Save Cancel Delete Actions

**Inspections and Surveys**

Name \* JHSC-MTG MINS

Description \* Joint Health and Safety Committee Meeting Minutes

Inspection/Survey Questionnaire \* Joint Health and Safety Committee (SE1-JHSC)

Start Date \* 01/01/2021 Recurrence Frequency \*

End Date mm/dd/yyyy

Click to turn on System Reminders for this Inspection ☒

Alternative Reminder Settings

Assign a recurring inspection task to individuals in the organization

Track corrective actions

← My Tasks

Home My Tasks Event Reports Offline

Joint Health and Safety Committee Cancel Save Submit

1. MEETING DETAILS Hide Related Question(s)

1.1. Location: 0 / 4000

1.2. Date: month/day/year MM/DD/YYYY

1.3. Recorder: 0 / 4000

1.4. Participants: 0 / 4000

1.5. Absent: 0 / 4000

2. AGENDA Hide Related Question(s)

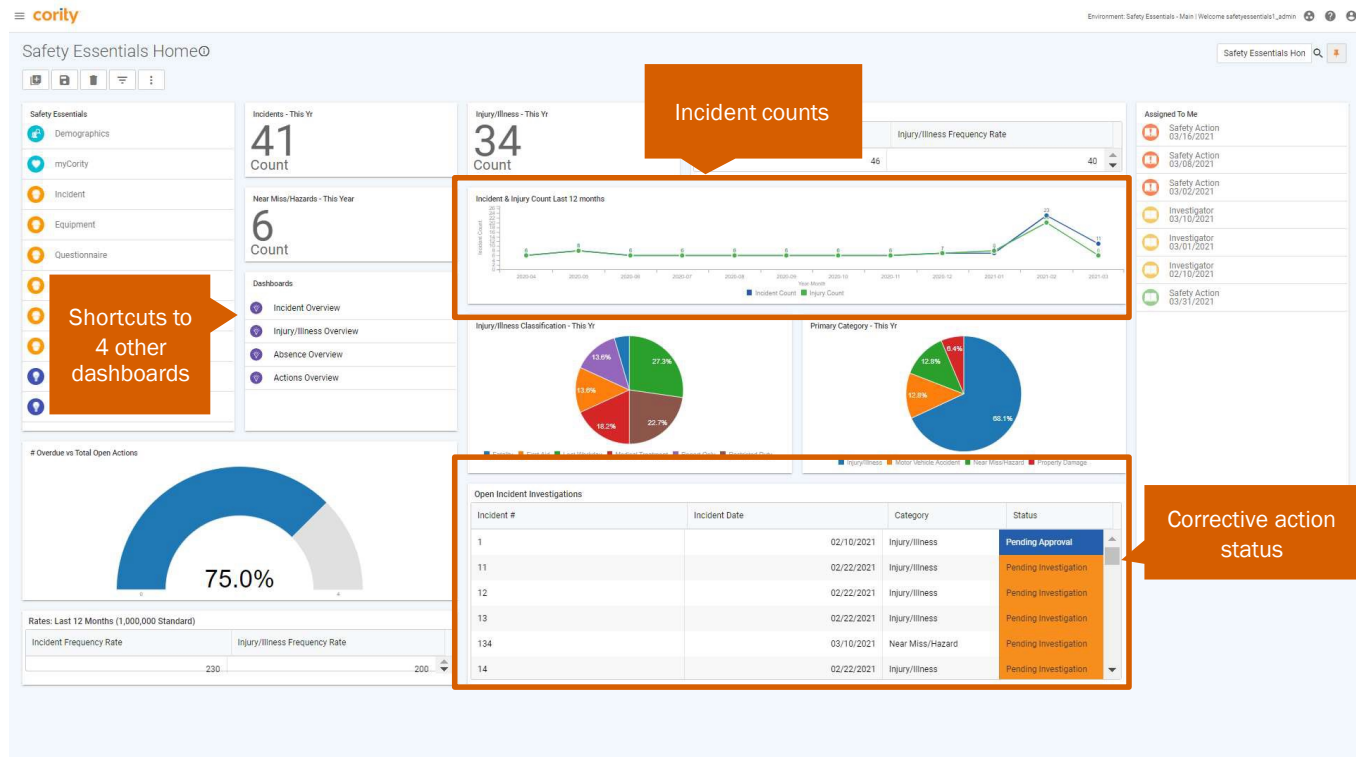
2.1. Call to Order (input time)

Inspection questionnaires are available via myCority



# Product Views

## Dashboards

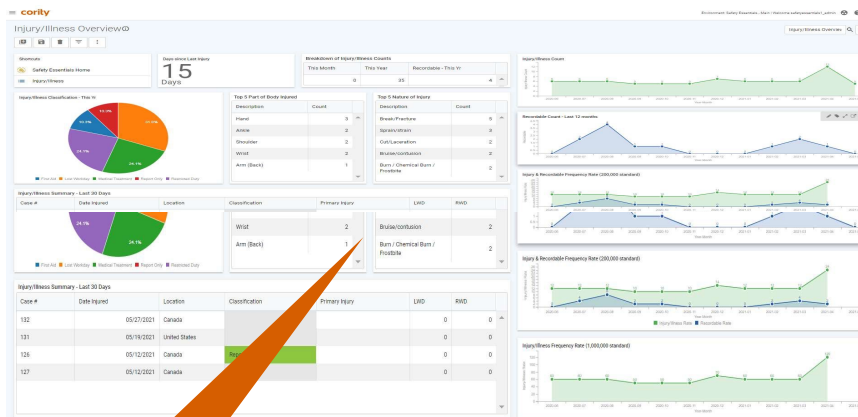


Safety Essentials Home dashboard



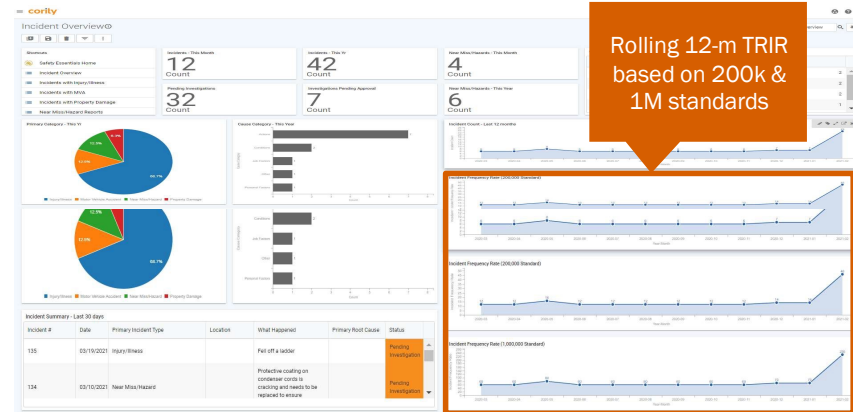
# Product Views

## Dashboards



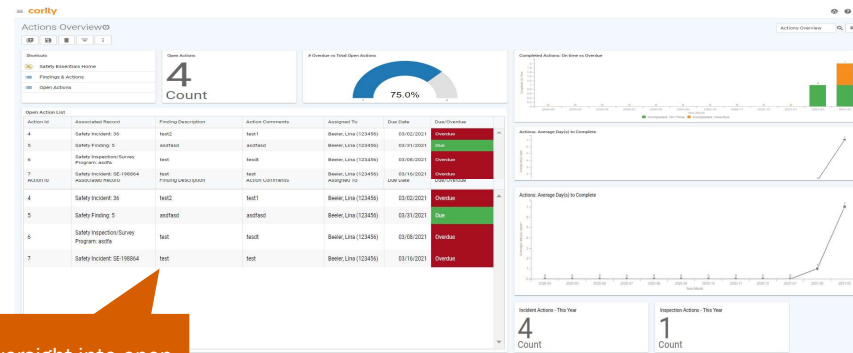
Injury data by  
"nature of injury"  
and "body part  
affected"

Injury / Illness dashboard



Rolling 12-m TRIR  
based on 200k &  
1M standards

Incident Overview dashboard



Oversight into open  
actions and their  
criticality

Actions Overview dashboard



# Safety Essentials - Implementation Process



cority

safety cloud

*empower better prevention*



cority safetycloud.com

# Implementation



## Rapid Deployment Approach

- 14-week timeline
- Preconfigured templates to be completed by client
- Workshop to review configuration templates
- Train-the-Trainer + Client Created Guides

## Benefits

- Default configurations can be used quickly
- Results in faster deployments, lower services cost and quicker time-to-value

