

Wipro Enterprise and Function Business Architecture

Devise a representation of business from varieties of perspectives such as strategy, value and capability that facilitates alignment of technology landscape with business goals and objectives

Wipro Enterprise Business Architecture



Strategic Intent

- Identify aspirations, challenges, priorities and motivation to demonstrate alignment of drivers that are important to achieving the business vision and strategies, to the business objectives.



Value Stream

- Design an end-to-end perspective of value from the stakeholder's perspective in close alignment with organization's business model.



Business Capability

- Model business capability (upto level 4) to represent what business does and identify critical capabilities that provides stakeholder value through value stream cross-mapping.



Organization Structure

- Create organizational map to identify business units or third parties, and identify list of actors interacting with IT

Service Definition

Enterprise Business Architecture is a representation of business from varieties of perspectives such as strategy, value and capability that facilitates alignment of technology landscape with business goals and objectives.

Business Architecture Paradigm



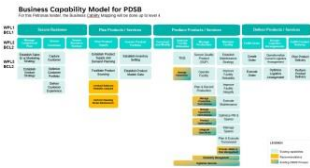
Business Architecture Deliverables



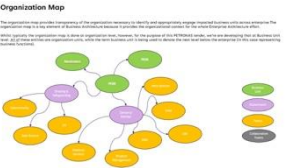
Strategic Intent (Business Strategy / Goals Drivers, Business Initiatives / Insights, Digital Goals and Initiatives)



Business Value Stream Map



Business Capability Mapping

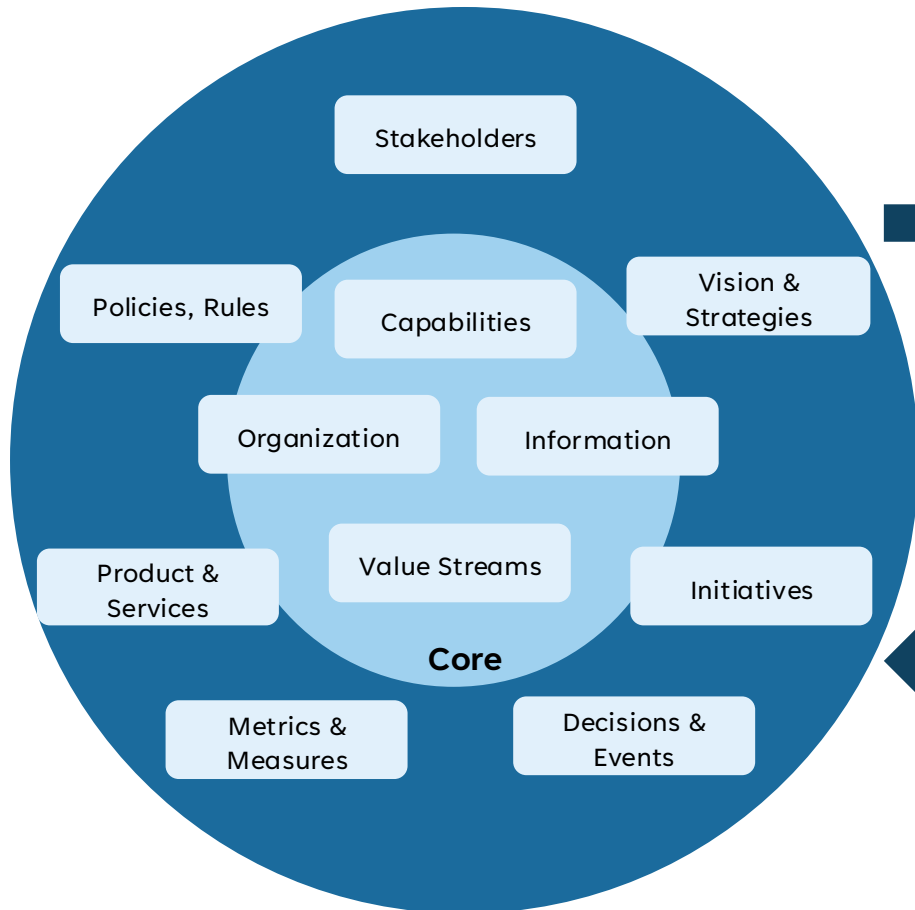


Organization Map

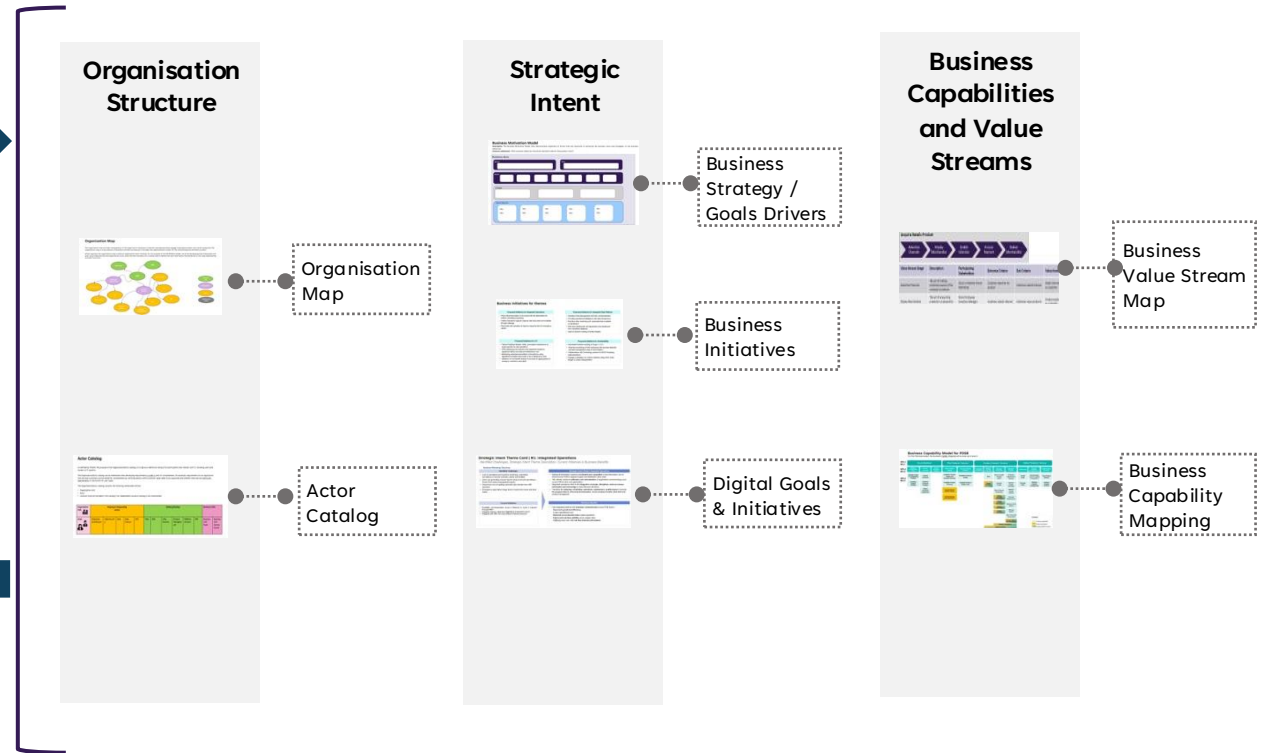
Service Definition

Alignment of Key business perspectives with deliverables

Business Architecture Perspectives

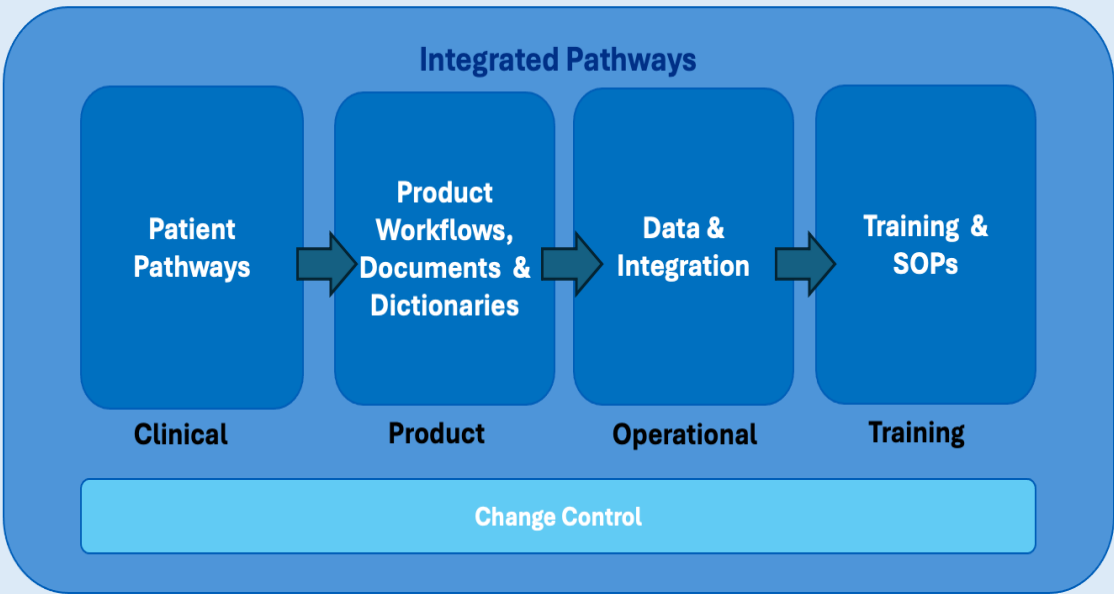


Business Architecture Deliverables



Healthcare Example

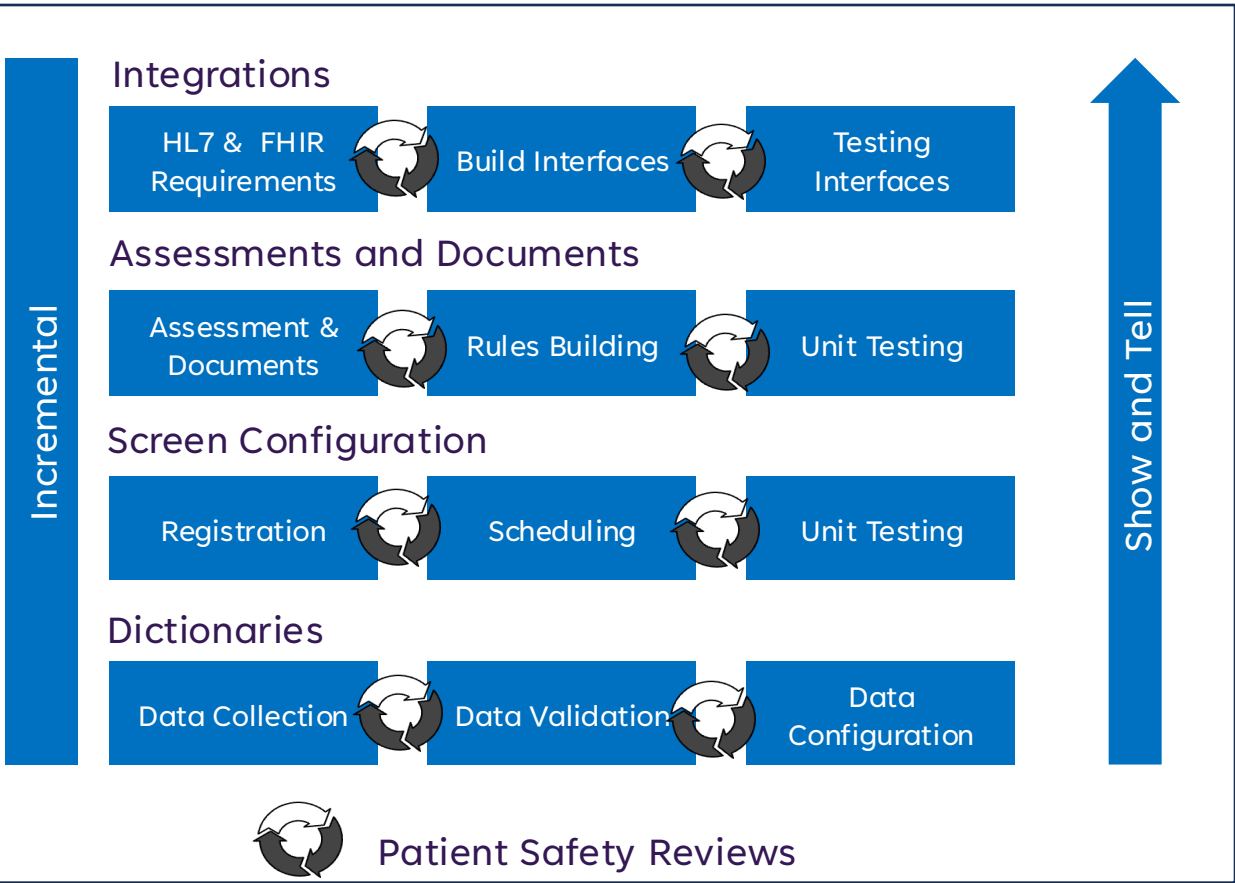
EPR Design Playbook



Agentic AI interrogates the Design Playbook to iterate changes as needed in BAU

- Clinical – led Incremental build (configuration)
- Adopt first then adapt (Standardisation and then customisation)
- Iterative build with reviews build in

- Patient Safety By Design Framework for linking clinical, product, data & integration and training to create 'to be blueprint'
- Single common integrated repository to ensure any changes are reflected across all areas and ensure patient



BUILD APPROACH