

SALUS

—  
CYBER

ITHC SERVICES



[WWW.SALUSCYBER.COM](http://WWW.SALUSCYBER.COM)

# IT HEALTH CHECK SERVICE (ITHC)

The UK Government spends over £1000 Billion on public services in the UK, many of the IT systems it operates hold sensitive PII and sensitive/classified information across over 1000 organisations. It also processes critical welfare payments and is responsible for tax collection to fund society.

Government has set the ITHC standard for assurance testing to ensure it gets the highest quality testing services possible to reflect the risks it carries.

Salus Cyber is a ITHC service provider under the NCSC CHECK Assured Service Scheme and we provide quality, value for money, testing to the highest national standard.

## CHECK – Penetration Testing

CHECK is the scheme under which NCSC approved companies can conduct authorised penetration tests of public sector and CNI systems and networks.

Companies providing CHECK services use staff who hold NCSC approved qualification, have suitable experience, and penetration tests will be conducted using NCSC recognised methods.

The subsequent report and its recommendations are produced to a recognised standard.

## I'm not public sector or CNI so do I have to use ITHC/CHECK?

No, you don't. Salus Cyber applies the same high standards to all its testing and our clients benefit from the highest quality assurance levels for our work irrespective of who they are. So if you want the highest standard of assured testing give us a call.





# IT HEALTH CHECK SERVICE (ITHC)

## What Do I get from an ITHC provider?

- Security vetted testers who have been evaluated against stringent trust and integrity requirements.
- Defined point of contact for quality assurance and management of the task you have commissioned.
- Testing methodologies approved by the National Cyber Security centre which specifically:
  - Mandate that any testing undertaken can not cause damage to the systems they are testing.
  - Quality audit controls applied to a defined standard.
  - No residual artefacts created because of the test remain in the client environment. Additionally, in case any of these get overlooked a full breakdown of the indicators of compromise which might occur in the logs and monitoring systems are provided to the company.
  - Any residual changes which cannot be reversed are notified to enable post testing recovery.
  - Systems under test are returned to their original state.
- Testing assignments are conducted impartially and deliver technical results including recommendations which have regard to value for money.
  - Any conflicts of interest are managed effectively and disclosed with full transparency.
  - Any recommendations associated with additional products or services where we might have a commercial interest are objective and reflect the full range of options in the market.
- Testing proposals have a focus on efficiency and value for money.
- Reporting quality is of an assured standard independently audited by the National Technical Authority so you can have trust in the accuracy.
- You have access to NCSC as the national authority directly should you have any concerns about our service quality.

## I'm not a Govt or Public sector organisation can I use CHECK services?

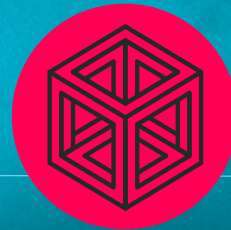
Yes, absolutely. Irrespective of your organisation you can be assured that the testing standards used for some of the most sensitive and complex IT environments will be applied to the work we do for you.

Whilst the CHECK scheme is specifically designed to deal with IT systems that hold Government protectively marked information, its equally as applicable to commercial organisations whom have their own sensitive information and IPR to protect.

# SALUS

CYBER

ITHC  
SERVICES



[WWW.SALUSCYBER.COM](http://WWW.SALUSCYBER.COM)  
01242 374087

