



# New Scaler Cloud Platform Service Catalogue

New Scaler Limited  
Registered in England and Wales  
Company number: 08187585

©2023 New Scaler Limited

# New Scaler Services: Overview

New Scaler has the knowledge, skills, expertise, and scale to provide consulting services that are of a high quality at prices that are reasonable. Whether you need assistance designing your future technology roadmap, need assistance driving forward your new services, technologies, and processes in the middle of a project, or need assistance empowering users to work and differ significantly, New Scaler can help.

## Our Team

Our team has extensive public sector experience and a demonstrated track record of pushing the limits of technology and supporting new working practices and service delivery models in order to make things operate more smoothly for our customers.

## Ordering Process

New Scaler provides both project-based and ad hoc services. During the pre-sales phase, we interact with clients to determine their requirements, intended objectives, and commercial advantages. Then, we design and agree upon the services that will be detailed in a Statement of Work (SoW). Prior to issuing a Purchase Order to cover the cost of the service, the client must accept and sign the Statement of Work together with the specified invoicing schedule. We immediately mobilise resources for the project after receiving them.

## On-boarding

For all engagements, New Scaler employs a standardised onboarding and mobilisation procedure. Typically, project kickoff meetings are held with the client's stakeholders, the project sponsor, and any other relevant parties to confirm project scope, the primary activities and outcomes, and the resources/inputs required for a successful project. The agreed-upon follow-up activities are then organised and executed.

## Security and Information Assurance

Any classification of service can be accommodated by our contracts. Our personnel hold a variety of National Security Vetting (NSV) levels and are able to work with information at all levels of the Government Security Classification (GSC) scheme.

## Skills and Knowledge Transfer

A key component of our G-Cloud services for all Public Sector clients is ensuring that our customers' employees are equipped with the necessary skills and expertise. With our consultants and engineers, we have extensive experience in giving training that is tailored to the specific needs of everyone to guarantee that the training is both successful as well as consistent.

## Service Management

The team at New Scaler has extensive knowledge of service management and toolkits for a wide range of platforms. We work closely with each customer to implement the most appropriate set of technologies, including Kaseya BMS, Azure and Microsoft 365 native monitoring, and third-party Service Management solutions.

## Pricing

Pricing available on request.

## Off-boarding

It is our responsibility to make sure that all agreed deliverables have been delivered and acknowledged by the client, as well as completing any necessary skills transfer. When the engagement is over, we delete all client data in accordance with the information classification level-specific deletion policy.

# New Scaler Range of Services

Technologies									
Microsoft 365					Azure				
Microsoft 365	Microsoft Teams	SharePoint	Enterprise Mobility + Security	Intune	IaaS	PaaS	Data BI	Enterprise Landing Zone	Data Mesh
Autopilot	Voice	App Modernisation	Windows 10/11 Deployment	Information Architecture	DRaaS	Azure Lighthouse	Artificial Intelligence	Machine Learning	Azure Firewall
Mailbox Migration	Identity	Azure ATP	Tenant Design		Azure Policies	Azure Governance		Azure Virtual Desktop	Azure Purview
Consulting Services									
Technical Consulting					Change Management		Business Consulting		Governance and Security
Hybrid Cloud Assessment	M365 Readiness Assessment	Azure Migration	M365 Design and Deployment	Network Assessment	User Research & Analysis	User Adoption	Road Mapping	Business Case	Pen Testing
Cyber Security	Core Productivity Service	Identity and Access Management	Go Paperless	Desktop-as-a-service	Change Management	Training	Interim CIO	Microsoft Licensing	GRC Consulting

# Cloud, Technology and Digital Consultancy

New Scaler's strategy & consulting services will provide advice, leadership, guidance & delivery support to assist you with questions, ambitions & programmes of work. The depth & breadth of New Scaler's capabilities enables us to do this from a user needs, enterprise systems, technology strategy or business planning & strategy start point.

## Service Overview

Our Cloud, Technology & Digital Strategy consulting services provide advice, leadership, guidance & delivery support assisting you with your questions, ambitions & delivery of IT programmes. The depth & breadth of our capabilities enables us to deliver services with full consideration of user needs, technology/business strategy, enterprise systems, data/information architecture.

*This service can include & encompass one or many of the areas listed below:*

- Requirements definition & capture.
- Technology, Digital, Commercial & Sourcing Strategy development & implementation.
- Business case assessment, review & development.
- Assessment, recommendation & implementation of applications, technologies & services.
- Design & architecture.
- Migration of cloud services, both new & legacy systems & services.
- Change & transition planning & delivery.
- Service & supplier evaluation & selection.

## Features

- Requirements definition & capture
- Technology, Digital & Commercial Strategy development & implementation
- Business case assessment, review & development
- Assessment, recommendation & implementation of applications, technologies & IT services
- Virtual &/or interim CISO, CIO & CTO services
- Microsoft cloud infrastructure & architecture assessment
- Microsoft Managed Desktop (MMD) Business Case & Planning
- Long term partnership & support of delivery, transition & management
- Programme & project management support, review & assurance.

## Benefits

- Integrated support relating to technology, cloud & digital strategy
- Understanding of savings & benefits relating to cloud transition
- Detailed & assured evaluation of suppliers & technologies
- Experienced public & private sector advice & delivery
- User centric strategy, design & planning
- Skilled coaching & development for succession planning
- Provide security assurance & review improving cyber security posture
- Optimise use of Microsoft cloud technologies.

## Assessments



- [Cloud Readiness Assessment](#)
- [Cloud Adoption Framework Review](#)
- [Cloud Journey Tracker](#)
- [DevOps Capability Assessment](#)
- [Well Architected Framework \(WAR\)](#)
- [Landing Zone Review](#)

## Solutions



- [Cloud Transformation & Migration Service](#)
- [Cloud Strategy & Architecture Design](#)
- [Azure Virtual Desktop Deployment](#)
- [DevOps Architecture](#)
- [Landing Zone Design & Deployment](#)
- [Cloud Resource & Cost Optimisation](#)
- [Managed Azure Cloud](#)
- [Multi-Cloud Environment](#)
- [Cloud Interoperability \(InterOp\) Services](#)
- [Secure Cloud Networking](#)
- [Azure Monitoring](#)
- [Cloud Storage](#)
- [Secure Cloud Print Solutions](#)

# Platform : Assessments

# Cloud Readiness Assessment

## Service Overview

Thinking to Migrate to the cloud? Take the critical first step for your organization to assess the preparedness of people, process & technology to go-live. Cloud readiness assessment, also known as the Strategic Migration Assessment & Readiness Tool (SMART), evaluates your organization's ability to migrate its IT infrastructure, applications, & data to the cloud. Identify potential issues that could impact the success of your cloud migration, with a list of actionable recommendations to mitigate these risks. It provides valuable insights into the organization's IT infrastructure and helps ensure a successful cloud migration.

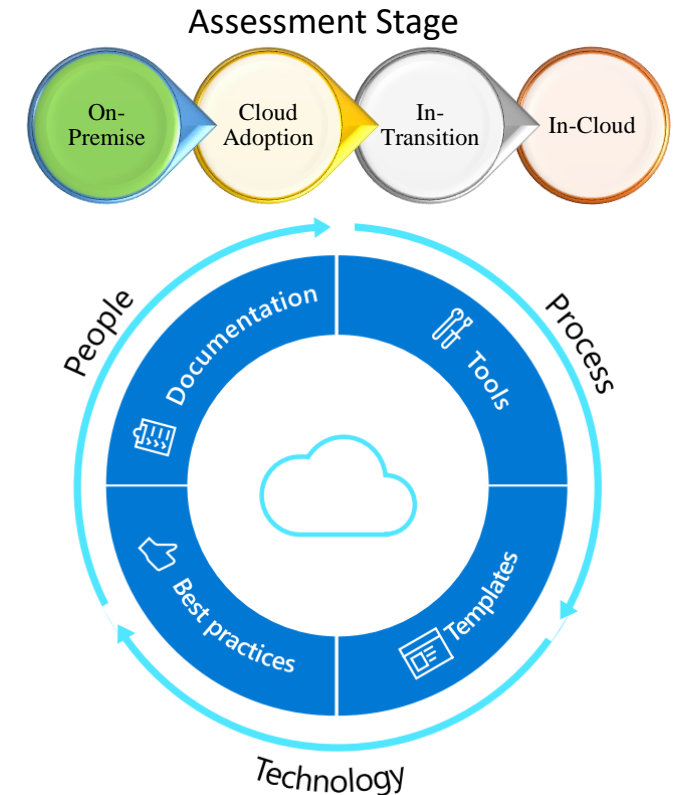
## Key Focus Area

- Workload Analysis: Evaluate the existing workloads & applications to determine their suitability for migration to the cloud.
- Infrastructure Assessment: Assess the organization's current infrastructure & architecture to identify potential migration challenges & opportunities for optimization.
- Application Assessment: Evaluate the compatibility & dependencies of applications for migration, considering application architecture, data dependencies, & integration requirements.
- Data Assessment: Analyse the organization's data landscape to identify data migration requirements, data storage options, & data governance considerations.
- Security and Compliance: Assess the organization's security and compliance posture to ensure a secure & compliant migration to the cloud.

## Deliverables

- Cloud migration strategy roadmap outlining the steps required to migrate workloads to Azure.
- Detailed migration plan with prioritized workloads, estimated costs, and migration timelines.
- Best practices guidance for leveraging Azure services and tools to support a successful migration.
- Risk mitigation plan addressing security, compliance, and operational concerns.

Whether you are planning to migrate a single workload or embarking on a large-scale cloud migration initiative, SMART will guide you in making informed decisions, optimizing your migration strategy, and achieving a successful cloud transformation.





# Cloud Adoption Framework Review

## Service Overview

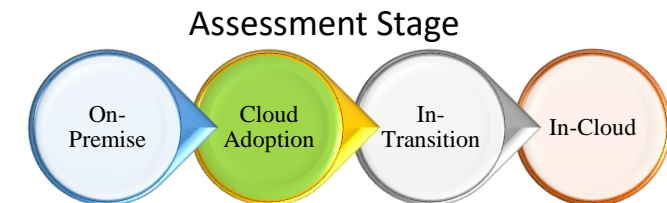
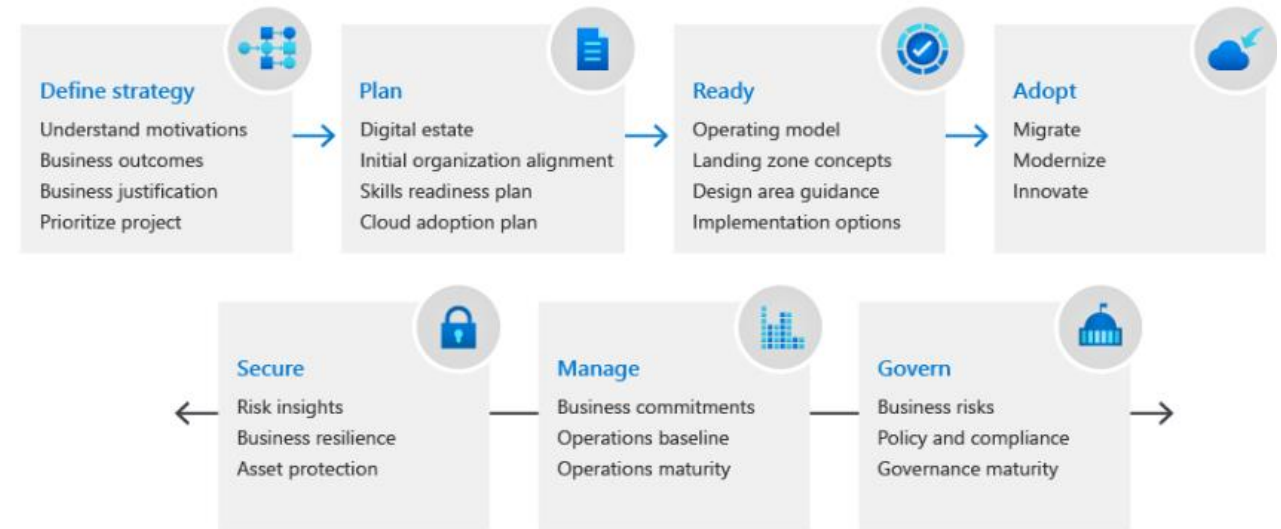
The Cloud Adoption Framework Review is a comprehensive assessment offering designed to evaluate and optimize an organization's cloud adoption strategy and implementation based on Microsoft's Cloud Adoption Framework (CAF). This assessment focuses on aligning cloud adoption practices with industry best practices and leveraging Microsoft Azure cloud services to maximize business outcomes.

## Key Focus Area

- Assess the organization's *cloud strategy* and *alignment* with business goals, identifying areas for optimization and refinement.
- Evaluate the effectiveness of *governance* practices and *security controls* within the cloud environment, leveraging tools such as Microsoft Azure Policy, Security Centre, & Sentinel.
- Review the cloud *architecture and design principles*, ensuring scalability, reliability, & performance.
- Assess the organization's approach to *migrating and modernizing* applications and workloads.
- Evaluate the *cloud operations and cost management practices*.

## Benefits

- Alignment of cloud adoption strategy with business objectives, maximizing return on investment.
- Enhanced governance & security practices to ensure compliance & mitigate risks.
- Optimized cloud architecture for scalability, reliability, and performance.
- Improved cloud operations and cost management to optimize resource utilization and minimize costs.



Utilising industry best practices & tools to conduct the Cloud Adoption Framework Review, we provide valuable insights & recommendations tailored to your organization's needs. Whether you are starting your cloud adoption journey or looking to optimize your existing cloud environment, the Cloud Adoption Framework Review will help you align with industry best practices and achieve successful outcomes.



# Cloud Journey Tracker

## Service Overview

Migration in-progress? Cloud Journey Tracker is the tool to enable your organization to track cloud migration progress and monitor the ongoing performance of your cloud environment. The Cloud Journey Tracker offers directions and detects whether an organization has adopted a holistic approach to their digital transformation, encompassing decisions related to business, people, and technology, along with the expected outcomes.

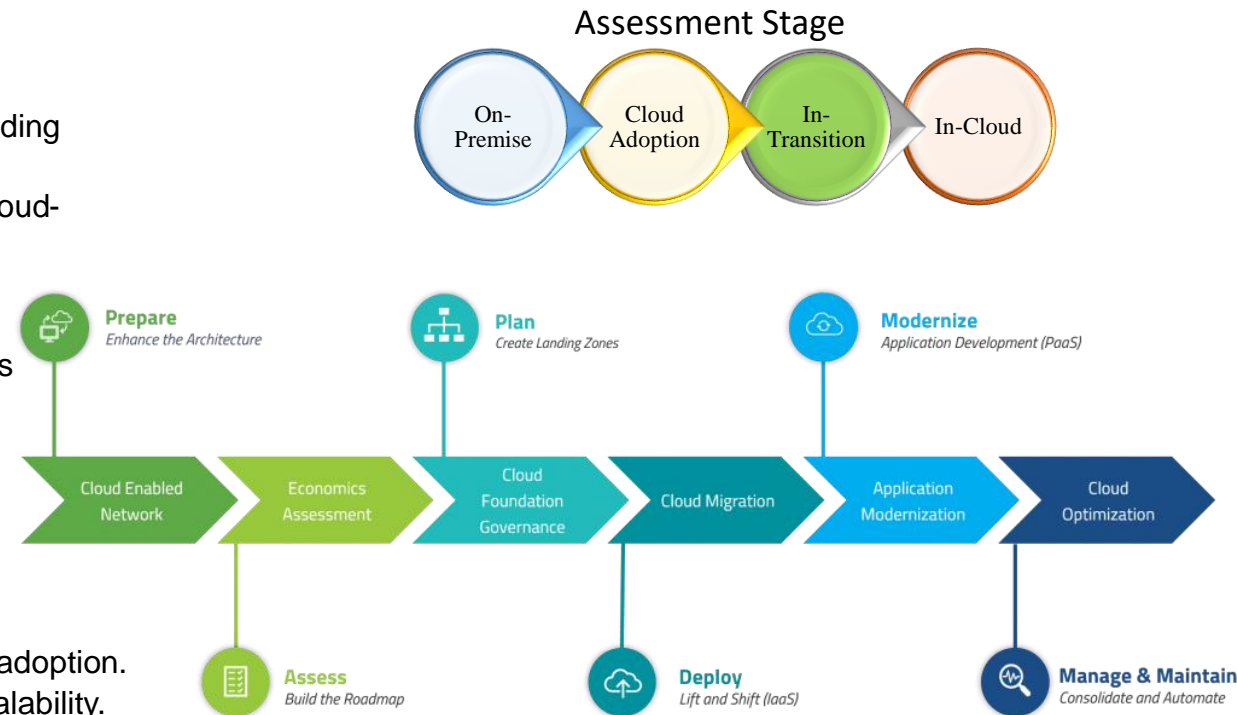
## Key Focus Area

- *Cloud Adoption Strategy*: Evaluate the organization's cloud adoption strategy, including considerations for workload migration, hybrid cloud, and multi-cloud deployments.
- *Infrastructure Modernization*: Assess the modernization of infrastructure through cloud-native services and migration approaches.
- *Application Modernization*: Evaluate the modernization of applications through containerization, serverless computing, and microservices architecture.
- *Data and Analytics*: Assess the organization's utilization of Azure data and analytics services for data storage, processing, and insights generation.
- *Governance and Compliance*: Evaluate the implementation of governance and compliance policies to ensure security, privacy, and regulatory compliance.

## Benefits

- Clear visibility into the organization's cloud adoption journey and progress.
- Identification of areas for improvement and recommendations for optimizing cloud adoption.
- Enhanced infrastructure and application modernization for increased agility and scalability.
- Leveraging Azure data and analytics services to gain insights and make data-driven decisions.
- Ensuring governance and compliance adherence throughout the cloud journey.

Utilising a combination of proven methodologies, we conduct the Cloud Journey Tracker Assessment providing valuable insights and recommendations tailored to your organization's cloud adoption goals. Whether you are starting your cloud journey or looking to optimize your existing cloud adoption, the Cloud Journey Tracker Assessment will help you track progress, identify areas for improvement, and guide you towards a successful and efficient cloud transformation.



# DevOps Capability Assessment

## Service Overview

The DevOps Capability Assessment is designed to assess and enhance an organization's DevOps practices and capabilities. This assessment focuses on identifying areas for improvement & providing actionable recommendations to optimize software delivery, collaboration, & automation across the development & operations teams.

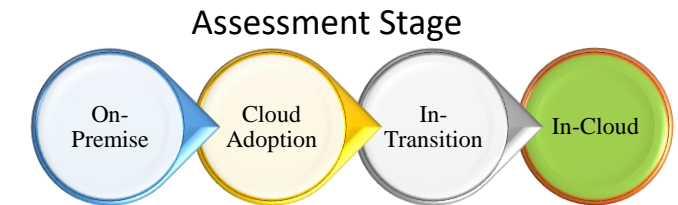
## Focus Area

- *Culture and Collaboration*: Assess the organization's collaboration practices, emphasizing the importance of cross-functional teams & agile methodologies.
- *Continuous Integration and Delivery (CI/CD)*: Evaluate the maturity & effectiveness of CI/CD practices
- *Infrastructure as Code (IaC)*: Reviewing the provisioning & management of infrastructure through code, using tools like ARM templates
- *Automated Testing & Quality Assurance*: Assess the level of automation in testing processes & the effectiveness of quality assurance practices
- Evaluate the organization's *monitoring & observability* capabilities

## Benefits

- Streamlined software delivery and increased agility through the adoption of DevOps practices.
- Improved collaboration & communication between development & operations teams.
- Accelerated time-to-market through effective CI/CD pipelines and automation.
- Enhanced infrastructure management and provisioning through Infrastructure as Code.
- Higher software quality & reduced defects through automated testing and quality assurance.
- Real-time monitoring and observability for proactive issue detection and resolution.

We utilize a combination of proven methodologies and tools to conduct the DevOps Capability Assessment, providing valuable insights and recommendations tailored to your organization's needs. Whether you are just beginning your DevOps journey or looking to enhance your existing practices, the DevOps Capability Assessment will help you identify areas for improvement, implement best practices, and achieve a mature and efficient DevOps culture.



# Well-Architected Framework Review (WAR)

## Service Overview

The Well-Architected Framework Review (WAR) is a comprehensive assessment designed to evaluate and optimize the architecture of your cloud-based solutions based on the Azure Well-Architected Framework. This assessment is based on the 5 pillars of a good architecture and focuses on ensuring that your Azure infrastructure is secure, reliable, scalable, efficient, and cost-effective.

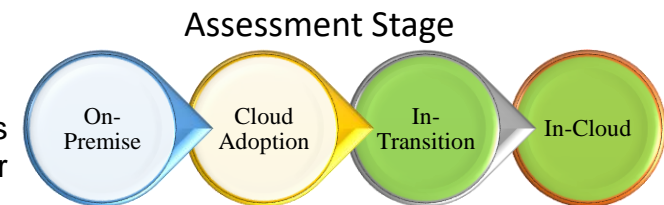
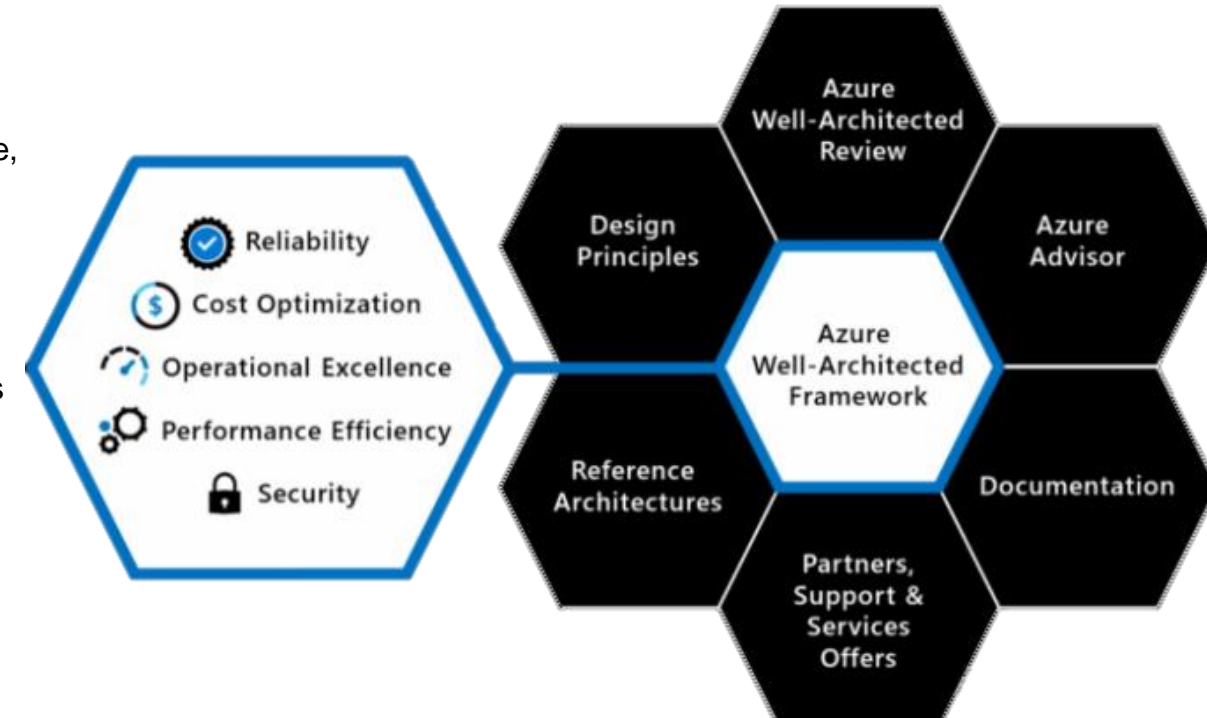
## Key Focus Area

- **Security:** Evaluate the security measures implemented within your Azure architecture, leveraging tools like Azure AD, Security Centre, Key Vault, and Sentinel.
- **Reliability:** Assess the resilience & availability of applications & systems, considering factors like fault tolerance, high availability, & disaster recovery.
- **Scalability:** Evaluate the scalability of solutions, ensuring they can handle increased workloads & user demands.
- **Performance Efficiency:** Assess the efficiency of your infrastructure, including factors like compute optimization, database performance, & content delivery.
- **Cost Optimization:** Review the cost-effectiveness of resources, focusing on cost management, utilization, & optimization opportunities.

## Deliverables

- Comprehensive report highlighting strengths & weaknesses.
- Detailed architecture review with actionable insights & a roadmap outlining the steps required to address identified gaps and improve architecture.
- Implementation guidelines for leveraging services and tools to enhance your cloud
- Best practices documentation for maintaining a well-architected Azure environment.

Our experienced team are well-versed in the Well-Architected Framework, utilizing industry-leading tools & methodologies to conduct the assessment, providing valuable insights & tailored recommendations. If you are looking to optimize your existing architecture, the WAR will help you align with industry best practices.



# Landing Zone Review

## Service Overview

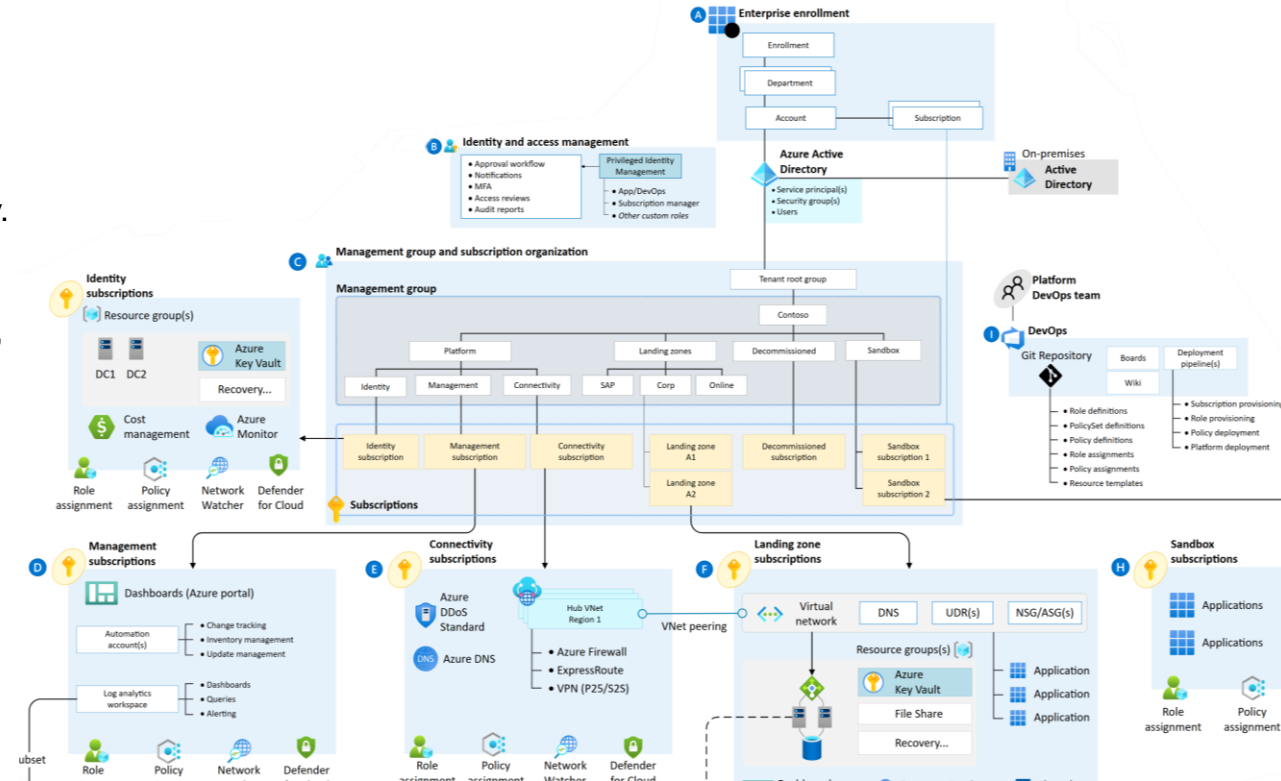
The Landing Zone (LZ) Review Assessment is a comprehensive offering designed to evaluate & optimize the cloud LZ architecture. This assessment focuses on the foundational design of the LZ, in order to ensure a secure, scalable, and well-structured cloud environment. We provide consultancy services to conduct the LZ Review Assessment, leveraging our expertise & best practices to evaluate your organization's cloud LZ configuration, security controls, and operational efficiency.

## Assessment Scope

- Evaluate the design and structure of the *LZ architecture*, including account structure, network topology, & resource organization.
- Assess the *security* measures within LZ, like IAM, encryption, network security.
- Review the alignment with regulatory compliances, industry standards, & governance frameworks to ensure adherence and control.
- Evaluate the *operational efficiency* of the LZ, including automation, monitoring, scalability, & cost optimization practices.

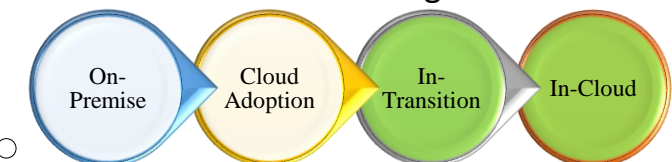
## Benefits

- Identification of architectural and security gaps within the LZ.
- Optimization of LZ for improved security, scalability, and operational efficiency.
- Alignment with regulatory requirements and industry best practices.
- Enhanced governance and control over the cloud environment.
- Cost optimization opportunities through improved resource management.
- Strengthened foundation for future cloud deployments and migrations.



## Assessment Stage

Whether you are planning a new cloud LZ or seeking to optimize your existing infrastructure, the LZ Review Assessment will help you ensure a secure, scalable, and well-structured foundation for your cloud deployments.



# Platform : Solutions



# Cloud Transformation & Migration Service

## Service Overview

We are dedicated to help ambitious organizations achieve success. Our core belief is that by offering comprehensive, outcome-based Cloud transformation services & fostering a deep relationship with Microsoft, we can confidently & effectively deliver projects. Whether you're looking to migrate from on-premise, virtual, public or private cloud environments, our team are here to assist you in seamlessly transitioning to Azure.



Understanding your business needs to accelerate your cloud adoption regardless of where you are on your journey. We are passionate about sharing the benefits of cloud and have helped multiple clients build future proof solutions helping them to operate more efficiently, improving agility to innovate faster. Industry standard strategies given your goal & use case -

1. **Lift & Shift (Rehosting):** If you are looking to simply migrate to cloud, the focus is on replicating the existing environment in the cloud, offering quick migration but limited cloud-native optimization.
2. **Replatforming:** In this approach, applications are migrated to the cloud with some modifications to take advantage of cloud services & capabilities
3. **Refactoring (Re-architecting):** This involves making significant changes to the application architecture to fully leverage cloud-native by adopting cloud-specific technologies to enhance scalability, flexibility, & performance.
4. **Rearchitect & Rebuild:** In this approach, the application is completely redesigned & rebuilt from scratch using best practices creating highly scalable, resilient, & optimized future-proof solutions.
5. **Hybrid Cloud:** This strategy involves combination of on-premises & cloud resources allowing organizations to keep certain workloads on-premise while leveraging cloud for scalability & flexibility, of specific services.

## Features & Benefits

- Work with experienced Microsoft Certified Azure Consultants
- Migrate IaaS or PaaS like from Physical, Vmware, Hyper-V, Windows and Open Source workloads to Azure
- Migrate from outsourced data centres public / private cloud to Azure
- Agentless options for non-invasive migration to Azure
- Accelerate cloud adoption, benefiting from our Azure migration experience
- Exit expensive data centre contracts & ongoing hosting costs
- Achieve your organisational priorities using Cloud as an enabler
- Fixed price cost model for migration delivers financial control
- Proven and refined methodology fit for your sector
- Working with Agile or PRINCE2 practices and values



# Cloud Strategy and Architecture Design

We view architecture as a key component in maximizing the long-term value derived from cloud transformation. Our dedicated architecture practice collaborates with you to craft a tailored strategy that goes beyond technology alone. We prioritize understanding how transformation influences user experience, operational performance, & asset security within the cloud environment.

## Benefits

- Alignment of clear, executable transformation roadmaps to business objectives
- Accelerated execution of cloud strategy through structured architecture approach
- Enhanced long-term realisation of cloud benefits
- Enhanced Performance & reliability with futureproof architecture
- Increased re-use through the application of standards & pattern
- Alignment to compliances & industry standard security practice
- Adoption of cloud security architecture principles
- Management of risks & dependencies
- Scalable, flexible & practical approach to suit your organisation & sector

## Strategy & Architecture Services

1. **Cloud Architecture Design:** In-depth analysis & design of cloud architectures tailored to your needs to develop a robust & scalable architecture blueprint.
2. **Azure Service Selection:** Assist in selecting the most suitable cloud services for your architecture ensuring optimal performance & functionality.
3. **Scalability & Elasticity:** We design architectures that can seamlessly respond and handle fluctuating workload demands effectively.
4. **Security & Compliance:** We prioritize security & compliance in cloud architecture design to safeguard your applications & data in the cloud.
5. **High Availability & Disaster Recovery:** By leveraging availability zones, backup & replication services, we ensure your applications remain accessible & resilient even in the event of failures or disruptions.
6. **Cost Optimization:** Our speciality lies in designing optimal solution without compromising the security & performance. Leveraging cost management tools to ensure efficient spending & maximize ROI.

### Trusted Security.

90% of Fortune 500 companies run on Microsoft Cloud. Security and privacy are built in with 90+ compliance offerings – including meeting the requirements of the General Data Protection Regulation (GDPR)

### Globally Redundant.

Azure is the only consistent hybrid cloud with more global regions than any cloud provider offering services in 140 countries from approx. 55 Regions

### IaaS, PaaS, SaaS.

While many organisations start with IaaS, Azure offers a multitude of modernisation options to higher value services with shared responsibility and lower complexity

### Windows & SQL Server for Less £.

Repurpose existing on-premise licensing investments and take advantage of Hybrid Benefit. Azure is the most cost-effective Cloud for Windows workloads

### Application Development.

Simplify the development and deployment of your solutions with consistent programming models, app services, data services, DevOps tools and support for open-source

### Management Tooling.

Manage and govern resources at scale with scripting tools, APIs, Azure Lighthouse and Azure ARC for management of cloud and on-premise infrastructure

### Hybrid Deployment.

Azure can be leveraged in the Cloud, On-Premise or at the Edge allowing flexibility and integration using a single identity platform used by 90% of enterprises. Seamless integration with Microsoft 365



# Azure Virtual Desktop Deployment

## Service Overview

Virtual Machine (VM) and Desktop as a Service (DaaS) on Azure Cloud offer flexible and scalable solutions for running your applications and desktop environments in the cloud. With Azure's robust infrastructure and management capabilities, organizations can streamline their IT operations, increase efficiency, and empower their workforce with secure and accessible virtualized environments. New Scaler can help you design, deploy, & manage your virtual machine & desktop environments.

## Benefits

- Elastic Scalability allowing to match real-time demand, optimizing performance & cost.
- Extensive OS Support: From Windows Server editions to Linux distributions.
- Leverage Azure's built-in availability & fault tolerance features for uninterrupted operation of your VMs.
- Utilize Azure Backup & Site Recovery services to protect your VMs & data from unexpected events
- Simplified & centralized desktop management, eliminating the need for on-premises infrastructure.
- Enable multi-session Windows for multiple users maximising resource utilization, reducing costs.
- Seamless remote work experience with access to desktop environment securely from anywhere.
- Seamlessly integrate M365 services like Teams, to enhance collaboration & productivity.
- Extend on-premises Windows Server licenses to Azure, enabling a consistent hybrid cloud environment.
- Define & enforce policies to maintain compliance & security standards across your virtual infrastructure.
- Gain visibility into your VM & DaaS environments, monitor performance, & generate actionable insights.
- Automate the provisioning, configuration, & scaling of VMs & desktops based on predefined rules.

## Use Cases

- Infrastructure Migration: Lift & shift existing on-premise VMs / desktops, reducing infrastructure costs & simplifying management.
- Development & Testing: Provision VMs & desktops on-demand for development & testing purposes, accelerating software delivery cycles.
- Seasonal Workforce: Quickly provision & deprovision virtual environments to accommodate seasonal or temporary workforce requirements.
- Remote Workforce Enablement: Provide a secure & accessible virtual workspace for remote employees, enabling productivity from anywhere.



### Deliver Windows 10 desktops and applications virtually anywhere

Provide employees the best virtualized experience with the only solution fully optimized for Windows 10 and Microsoft 365.



### Reduce cost using existing licenses

Use existing eligible licenses to reduce costs with a modern cloud-based virtual desktop infrastructure (VDI), and pay only for what you use.



### Built-in intelligent security

Help keep your applications and data secure and compliant with security capabilities that can proactively detect threats and take remedial action.



### Deploy and scale in minutes

Simplify deployment and management of your infrastructure and scale quickly based on your business needs.

# DevOps Architecture

## Service Overview

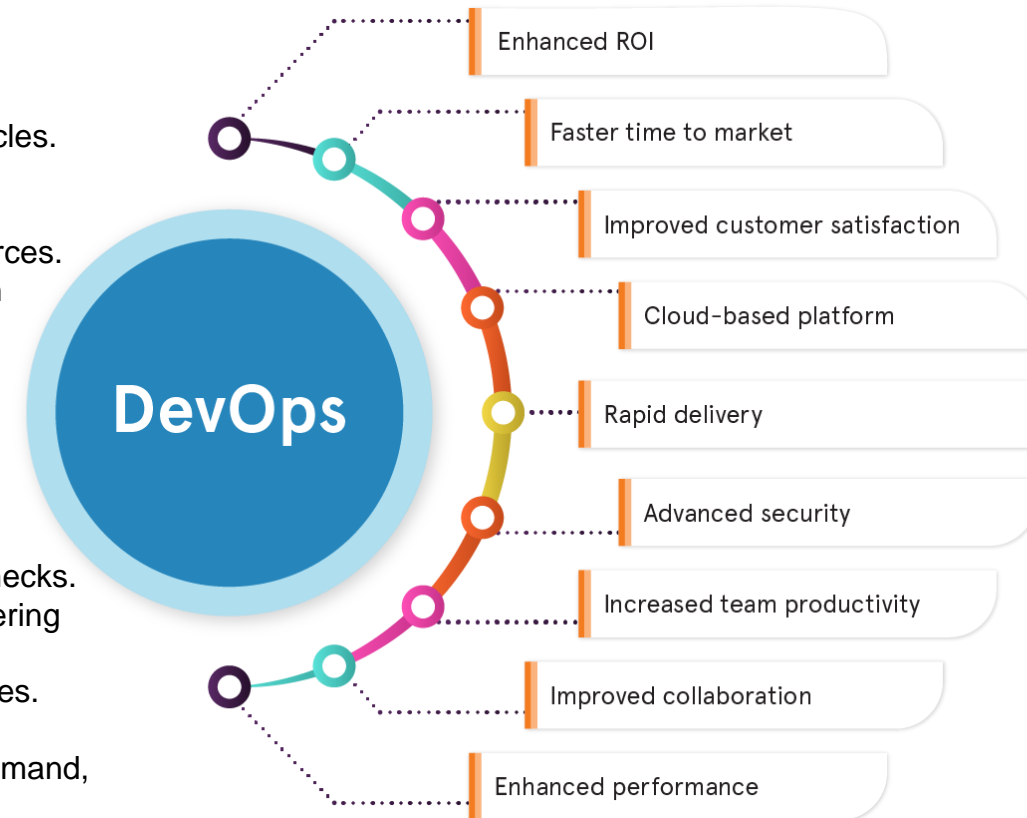
DevOps architecture is a modern approach that combines development and operations practices to enable organizations to deliver software at a faster pace, with higher quality and reliability. By integrating automation, collaboration, and continuous delivery, DevOps architecture empowers teams to streamline their software development lifecycle and drive digital transformation.

## Key Elements

- Embrace *Agile methodologies* promoting iterative development, collaboration & rapid feedback cycles.
- Continuous Integration / Delivery (CI/CD): Automate integration of code changes into a shared repository, & deployment & release of applications, enabling rapid & reliable software delivery
- Infrastructure as Code (IaC) to enable automation & consistency in managing infrastructure resources.
- Implement *continuous monitoring & observability* practice to gain real-time insights into application performance & availability.
- Foster a culture of *collaboration & effective communication* between stakeholders.
- Leverage wide range of *DevOps tools & technologies* that support DevOps practices, like version control, build servers, automated testing frameworks & deployment pipelines.

## Benefits

- *Faster Time-to-Market* for software delivery by automating manual processes & eliminating bottlenecks.
- *Improved collaboration* by breaking tasks into silos between development & operation teams, fostering shared responsibility.
- *Enhanced Quality & Reliability* by automated testing, continuous integration, & deployment practices.
- Feedback loops to gather insights, identify areas for *continuous improvement* & drive innovation
- Leverage cloud resources & infrastructure automation to *scale applications efficiently* based on demand, optimizing resource utilization.



Utilising our experience in DevOps architecture & working with industry-leading tools, like Git, Jenkins, Docker, Kubernetes, etc., we help adopt & implement best practices, choose the right tools & technologies, & design a scalable & efficient DevOps pipeline. Unlock the power of DevOps to transform your software delivery process, accelerate innovation & drive business growth.

# Landing Zone Design & Deployment

## Service Overview

Landing Zone (LZ) design & deployment solutions provide organizations with a robust framework for securely & efficiently establishing their presence in the cloud platform. By leveraging best practices and industry standards, we help organizations architect & deploy a scalable, reliable, and secure landing zone tailored to their specific needs. We offer comprehensive consultancy services to guide organizations through the entire process, from initial planning to final deployment. From Landing review assessment to conducting tailored workshops to understand your requirements, we assess your existing infrastructure, and design a customized landing zone architecture that work for you. The outcome will be a detailed document that serves as a blueprint for your cloud journey.

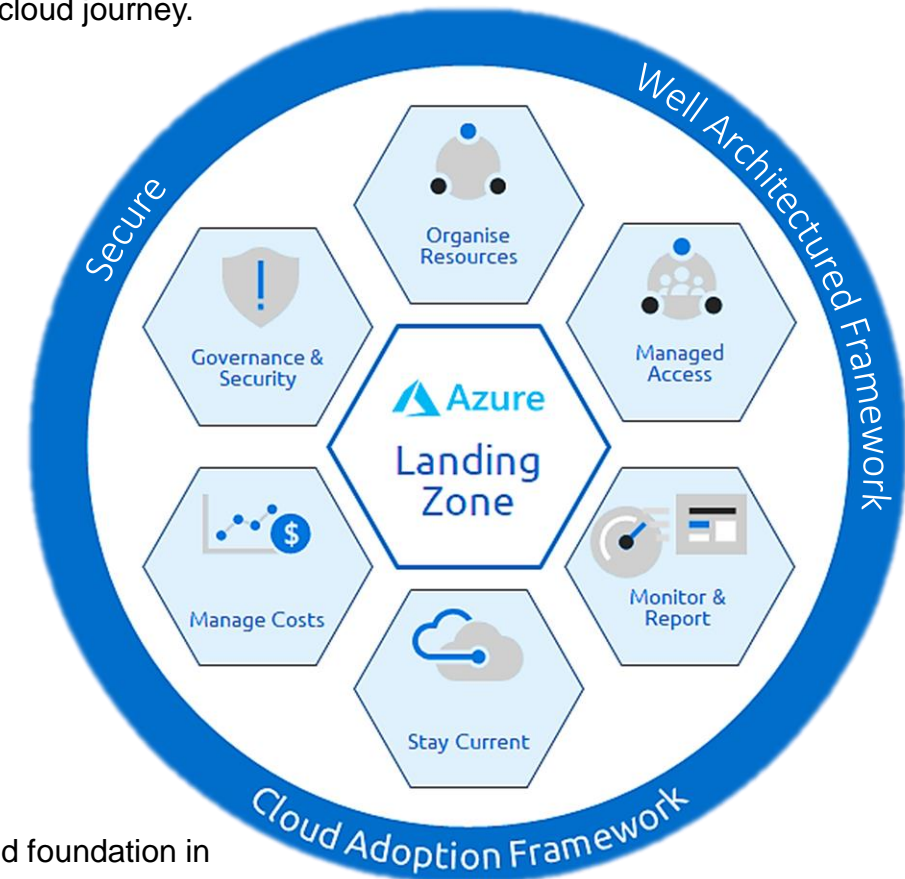
## Scope

- Landing zone architecture design based on industry best practices
- Customization to align with organizational requirements and compliance needs
- Network and security design with IDAM to ensure a secure and isolated environment
- Connectivity options to integrate on-premises infrastructure with Cloud
- Resource governance and management for efficient resource allocation
- Disaster recovery and backup strategies for data protection
- Cost optimization techniques to maximize ROI

## Benefits

- Accelerated cloud adoption & time-to-value for projects with a well-defined landing zone
- Improved security and compliance posture
- Scalability to meet growing business demands
- Enhanced resource management and governance
- Streamlined connectivity between on-premises and cloud environments
- Reduced risk of misconfigurations and vulnerabilities
- Cost savings through optimized resource allocation

By leveraging our Azure landing zone design and deployment solutions, organizations can establish a solid foundation in Azure, ensuring a seamless and secure transition to the cloud.



# Cloud Resource & Cost Optimisation

## Service Overview

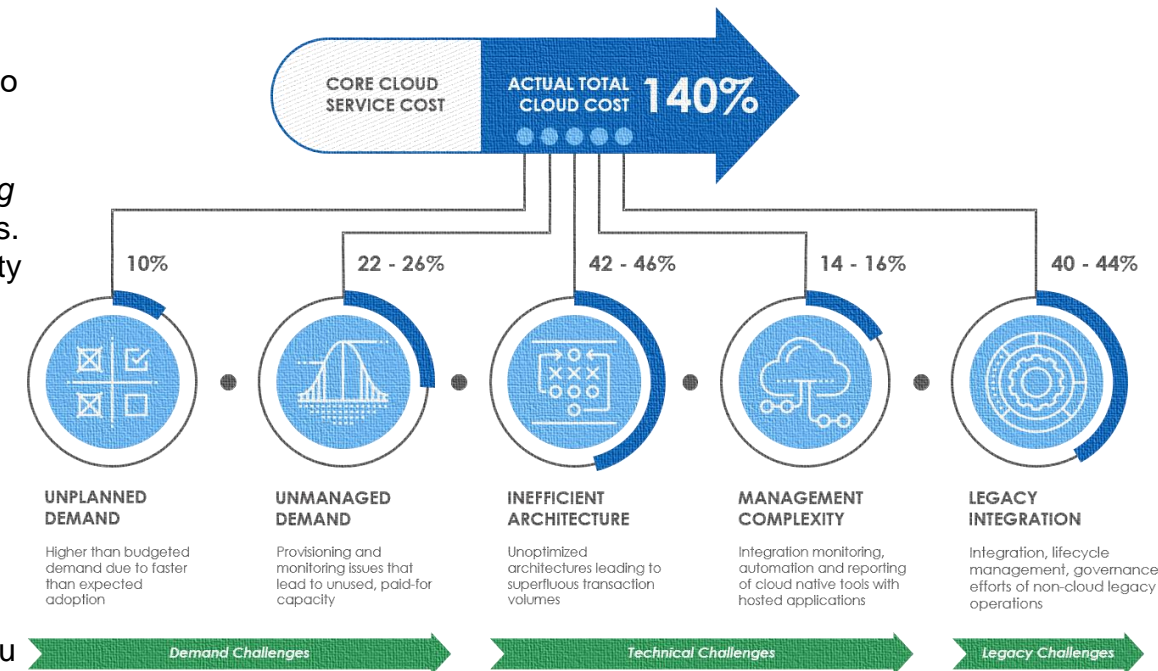
Cost management is a crucial aspect of any cloud infrastructure achieved by optimizing your cloud infrastructure & ensuring efficient resource utilization. With no strategy or supervision, cloud can erode your budgets before you expect, while over engineering can create complexities that can reduce operational efficiency. New Scaler's USP lies in helping organisations 'To Simplify their cloud environment and Amplify the benefits of their platform'. By implementing strategies, recommending the right tools & products, implementing cost optimization techniques & providing guidance on effective budgeting for cloud services we help you maximize the value of your cloud investment while minimizing unnecessary expenditures.

## Strategies

Resonating with Microsoft's 'Do More with Less Campaign' some of the strategies we use to amplify you benefits in cloud are listed below -

- Analysing resources to identify underutilized or overprovisioned instances. By *right-sizing resources*, we ensure you pay for only what is needed, leading to significant cost savings.
- By recommending the right *Reserved Instances*, allows you to commit to specific capacity reservation based on predictable workloads in exchange for substantial discounts.
- Implementing *robust monitoring* tools to track your resource usage patterns & analysing this data, we identify opportunities for optimization.
- Auto-scaling and Elasticity: Leveraging auto-scaling capabilities to dynamically adjust resources based on demand ensuring optimal resource allocation.
- Recommending to utilise *serverless computing* options, like Azure Functions or Logic Apps, to optimize resource utilization.
- Automate repetitive tasks, resource provisioning, scheduling, and management to streamline operations, efficiently utilise resources and optimize costs.
- We assist in establishing a consistent *tagging and resource group* structure, enabling you to categorize and allocate costs accurately across different departments or projects.

Cloud costs can escalate rapidly due to poor governance practices and management





# Managed Azure Cloud



A set of inter-related offerings, each one combining services to maintain the overall health, compute and capacity management, security & data protection of your platform.

Including outsourcing of the management & application of security updates to windows servers, protection of guest replication of the Azure Site Recovery along with the on-going management of the IaaS compute and storage profile.

The aim is to not only keep the lights on to ensure systems remain operational, but also to ensure the platform is optimized and protected.

## Features

Managed Azure includes the following complementary services:

- Managed Security Patching
- Managed Backup
- NOC Advanced Monitoring
- Capacity Planning & Cost Optimization on an Ad Hoc Project Basis

## Benefits

- Adding Technical Account Management (TAM) services for strategic development, design & consulting on optimisation of the Azure IaaS platform
- Project Resourcing to manage and deliver major platform upgrades & implementations facilitates a complete Azure managed wrapper.

Core Service		Service Features			
Managed Azure	Advanced Monitoring	Managed Security Patching	Managed Backup	Capacity Management	Cost Optimization (Ad Hoc Project Basis)
Collection of services combined to monitor performance, and stability, manage usage and capacity and deliver security patching within Azure estates	Realtime monitoring of IT systems (including but not limited to switches, firewalls, servers, cloud infrastructure)	Patching of Windows Servers with critical and security updates to mitigate risk of vulnerabilities on the server stack	Real-time monitoring of Azure Site Recovery platforms to ensure server backups, replication and DR images in ASR are successful and operable, identifying and remediating issues.	Reviewing the performance of Azure tenancy and managing up or down-scale of compute to ensure where under or over utilisation is present.	Combined with the capacity management element this element is to ensure the cost of the Azure estate is run optimally to meet both financial and performance requirements.

# Multi-Cloud Environments

## Service Overview

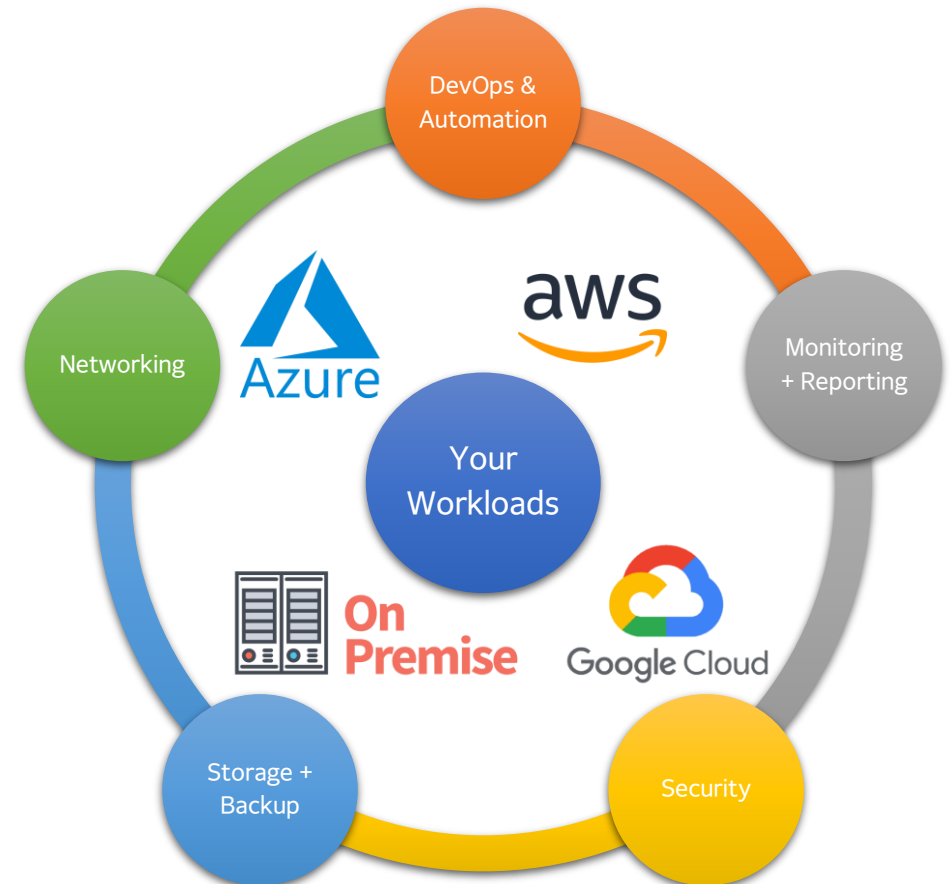
A multi-cloud environment is a strategic approach that leverages the benefits of multiple cloud service providers to optimize collaboration, communication, & productivity. New Scaler provides consultancy services for multi-cloud environments, including comprehensive guidance & licensing recommendations. We analyse the capabilities of various cloud providers, identifying the cost-effectiveness & build a roadmap to facilitate for informed decision-making for multi-cloud adoption.

## Key Features

- Integration of multiple cloud service providers
- Tailored technology recommendations & implementations based on your requirements
- Expert guidance on multi-cloud design & implementation
- Clear deployment timelines
- Customization of workshop content based on your specific documentation
- Hands-on testing activities and validation

## Benefits

- Alignment of multi-cloud capabilities with your business requirements
- Identification of license uplift requirements
- Streamlined deployment of cloud features
- Development of a compelling multi-cloud business case
- Insights into how similar organizations leverage multi-cloud capabilities



# Cloud Interoperability Services

## Service Overview

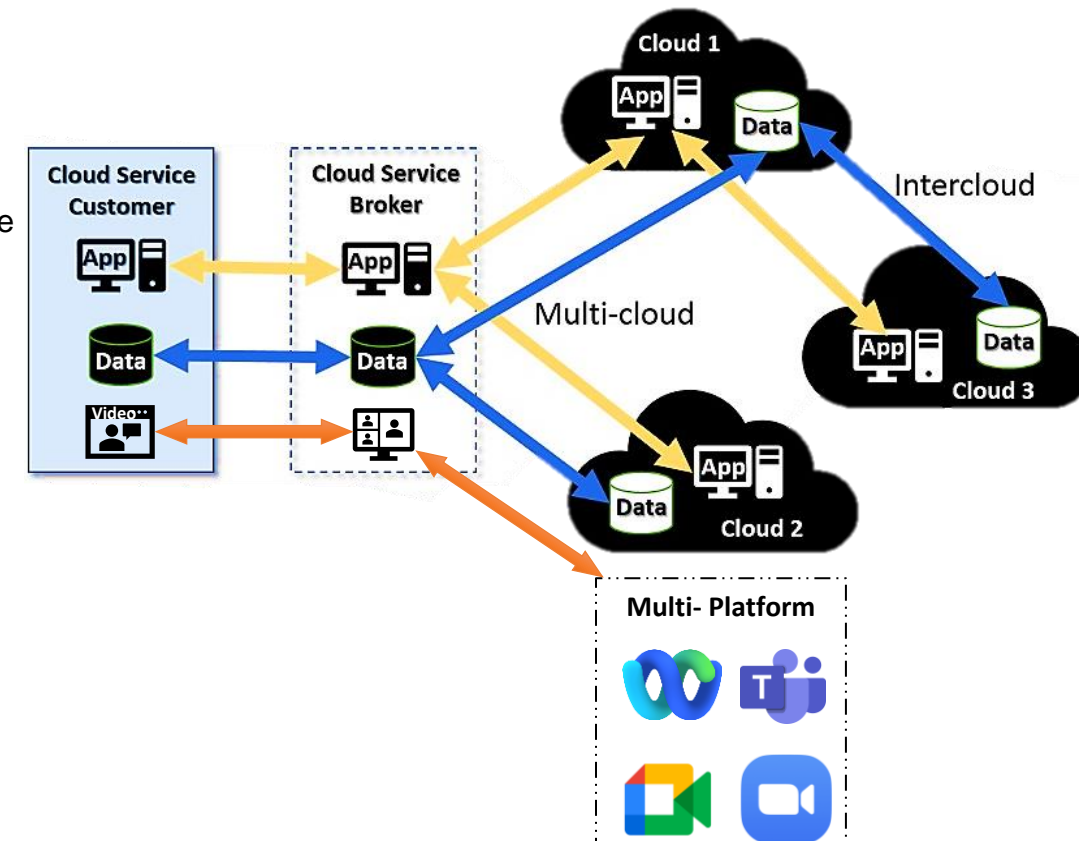
New Scaler provides specialised Cloud Interoperability Services building comprehensive solutions for seamless compatible integration and communication across various cloud-based systems, platforms, and applications allowing organizations to leverage the full potential of cloud computing. Our service spans across Video (CVI), Application, Audio, Data, Messaging & Workflow Interoperability.

## Features

- Cross-Platform Compatibility (for conferencing like Teams, Webex, Zoom)
- Multi-Protocol Support (SIP, H.323, and WebRTC) ensuring smooth interoperability.
- Unified & centralised management and monitoring
- Specialist Support integrating with other Cloud platforms
- Incorporate robust encryption, safeguarding sensitive data, prioritizing security & compliance
- InterOp services span across Video, Data, Application, Workflow & Security domain

## Benefits

- Reduce manual effort using automation to optimise business processes/ resource utilisation
- Avoids extensive infrastructure changes, maximizing the value of existing investments
- Flexible support package offerings to meet your requirements
- Seamless Integration/ Data Flow, ensuring reliable consistent information across cloud
- Overcomes compatibility barriers, giving flexibility to leverage different cloud technologies
- Scale effortlessly to adapt to evolving user needs, accommodating organizations of all sizes
- Access to enterprise level technical experts
- One stop shop for all your Cloud platform needs





# Secure Cloud Networking

## Service Overview

Cloud networking provides a powerful infrastructure solution enabling organizations to build, secure, & optimize their network architecture in the cloud. By leveraging the suite of networking services & tools, businesses can establish reliable & high-performance network connectivity, enhance security, & streamline network management. New Scaler's expertise in designing & implementing Azure & cloud networking solutions can help organisations by working closely with organizations, understanding their networking requirements, designing tailored architectures, & providing ongoing support optimizing their network connectivity & driving digital transformation.

## Services

New Scaler has experience in utilising the following cloud products & services to build complex yet simplified networking solutions tailored to your needs—

- Virtual Networks: Setup isolated & customizable virtual networks & WANs.
- Load Balancing: Distribute incoming traffic across multiple resources
- Traffic Manager: Direct user traffic to the closest & optimal endpoint.
- ExpressRoute: Establishing private / dedicated connection between on-premises & cloud infrastructure
- Firewall: Protect network resources from unauthorized access with highly available & scalable services.
- *VPN Gateway*: Enable secure & encrypted communication between on-premises & cloud over internet
- *DNS*: Host & manage your domain names with Azure's highly available & scalable DNS service.

## Benefits

- *Scalable & Flexible* networking aligned to your business, connecting resources across different regions.
- *Enhanced Security* measures to protect network & data, including firewalls, access controls, & encryption.
- *High Availability* & fault tolerance with load balancing & traffic routing capabilities.
- *Optimized performance* by routing traffic to the nearest & fastest endpoints, ensuring optimal user experience & reduced latency.
- Seamless *hybrid connectivity* from on-premise to cloud infrastructure, enabling hybrid & multi-cloud scenarios.
- *Centralised & simplified* network management & monitoring, from configuring policies to automated network deployments



# Azure Monitoring

## Service Overview

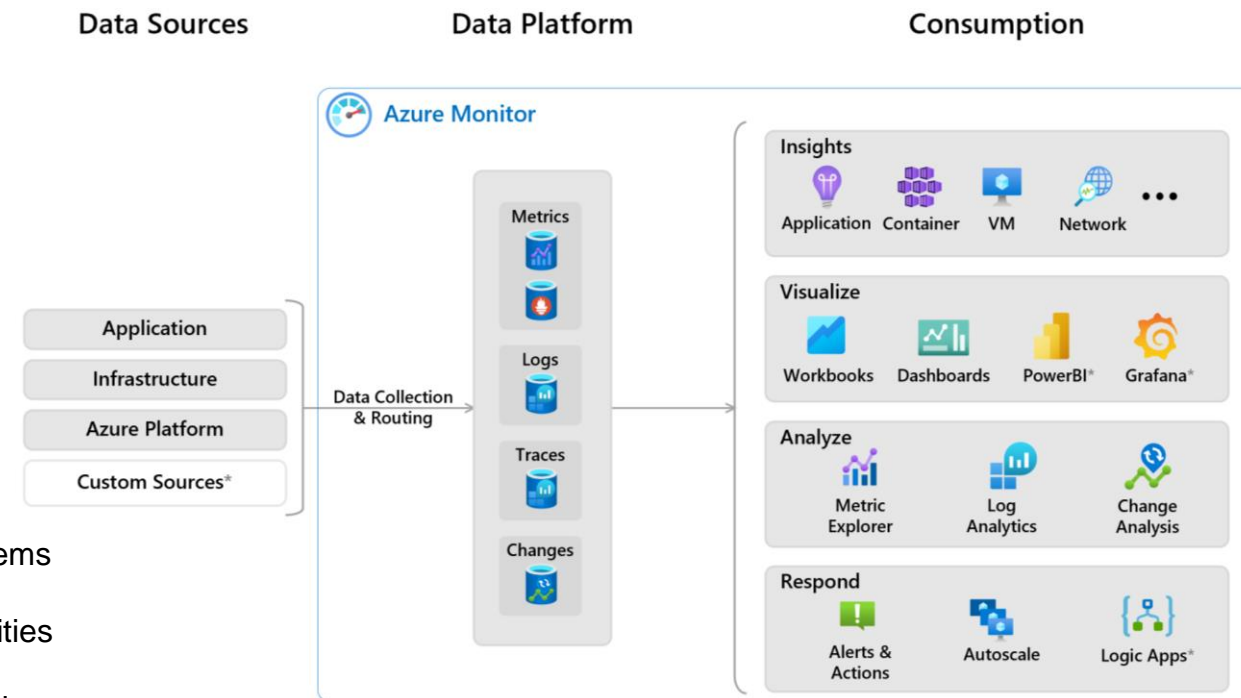
New Scaler's cloud monitoring solutions enable organizations to gain comprehensive insights into their cloud infrastructure, applications, & services. By leveraging robust monitoring tools & advanced analytics capabilities, we empower organizations to proactively identify & resolve issues, optimize performance, & ensure the reliability of their Azure environments. We offer consultant organizations to design & implement a unified & centralised cloud monitoring strategy. Our experts will assess your monitoring requirements, recommend suitable monitoring services, & configure a customized monitoring architecture that aligns with your objectives.

## Benefits

- Proactive issue detection and resolution to minimize downtime
- Improved performance optimization and resource utilization
- Enhanced security and compliance with real-time threat detection
- Actionable insights for informed decision-making and resource planning
- Streamlined troubleshooting and root cause analysis with centralized monitoring
- Cost optimization through recommendations for right-sizing resources
- Increased operational efficiency with automated monitoring and alerting
- Customizable dashboards and reporting for tailored monitoring views

## Use Cases

- Monitor infrastructure, applications & services to identify bottlenecks, optimize resource utilization & improve overall performance.
- Monitor KPIs to identify performance issues, system failures, troubleshoot problems ensuring a smooth user experience & minimizing downtime.
- Detect & respond to security threats in real-time by analysing security vulnerabilities & enforcing compliance policies to safeguard resources & protect sensitive data.
- Monitor usage patterns of workloads to accurately plan for capacity needs ensuring optimal resource allocation & cost efficiency.
- Configure real-time alerts & notifications based on predefined thresholds or specific events allowing team to respond promptly & mitigate potential disruptions or outages.
- Perform compliance audits to meet regulatory requirements or internal policies.



# Cloud Storage

## Service Overview

Cloud storage solutions empower organizations to securely store, manage, and access their data with flexible storage options, advanced security features, and seamless scalability. New Scaler helps organisations navigate choosing the best data platform solutions providing a reliable foundation for data-centric applications, backup & recovery, & content sharing. We offer comprehensive service to help organizations design & implement an optimized cloud storage strategy. Our experts assess your storage requirements, recommend the most suitable storage services, & design a scalable architecture that aligns with your business needs.

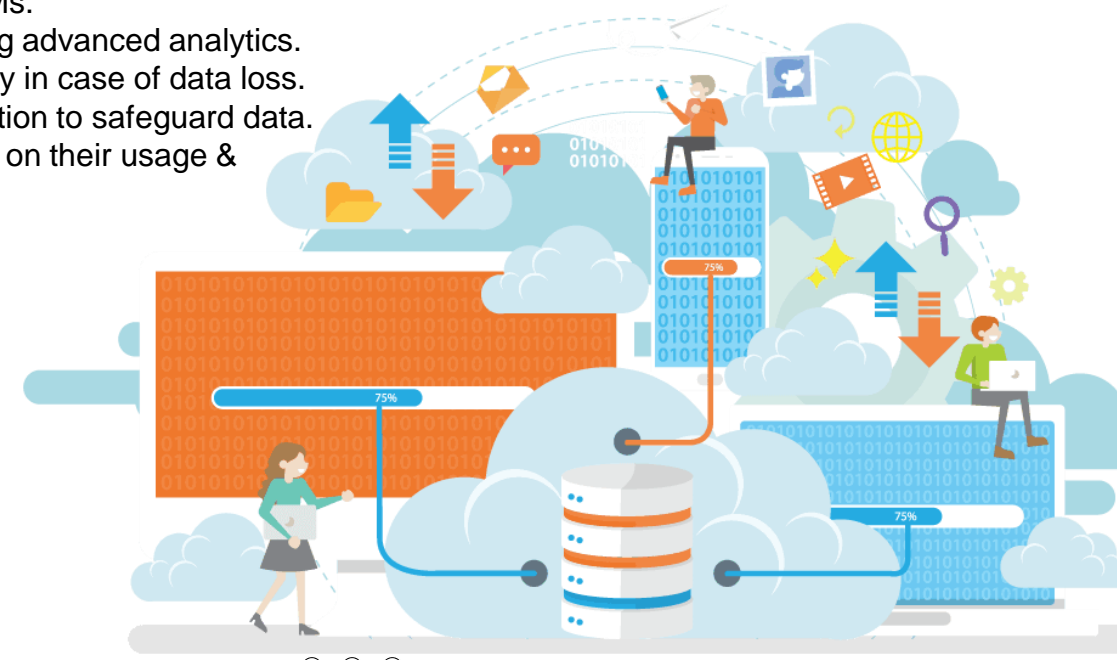
## Features

Cloud storage comes in many flavours & choosing one is a balance between the type of data stored, cost of storage, availability of data & the speed of access to it. Listed below are common features of cloud storage –

- Blob Storage: Securely store and manage unstructured data, such as media & documents.
- File Storage: Fully managed file shares that can be accessed by multiple endpoints, enabling collaboration.
- Disk Storage: Provision high-performance, durable, and scalable block-level storage for VMs.
- Data Lake Storage: Store and process big data with a scalable & secure data lake, enabling advanced analytics.
- Backup: Protect critical data with automated backups, ensuring data resilience and recovery in case of data loss.
- Security: Leverage advanced security features like encryption, access control, threat detection to safeguard data.
- Tiering: Optimize costs by automatically moving data between different storage tiers based on their usage & access patterns.

## Benefits

- Scalable storage capacity to accommodate growing data volumes
- Enhanced data durability and availability with built-in redundancy
- Seamless integration with other cloud services and applications
- Improved data security and compliance with encryption and access controls
- Cost-effective storage options based on usage and performance requirements
- Simplified backup and recovery processes with Azure Backup
- Increased productivity and collaboration with file sharing capabilities
- Advanced analytics and insights with Azure Data Lake Storage



# Secure Cloud Print Solutions

## Service Overview

Our secure cloud print solutions offer organizations a comprehensive set of tools to enhance document management, improve workflow efficiency, and strengthen data security. By leveraging cloud technologies and mobile network connectivity, we provide a seamless and secure printing experience across devices and locations. We offer consultancy & deployment services for secure cloud and mobile network print solutions, helping organizations identify the most suitable technologies and strategies to meet their specific requirements.

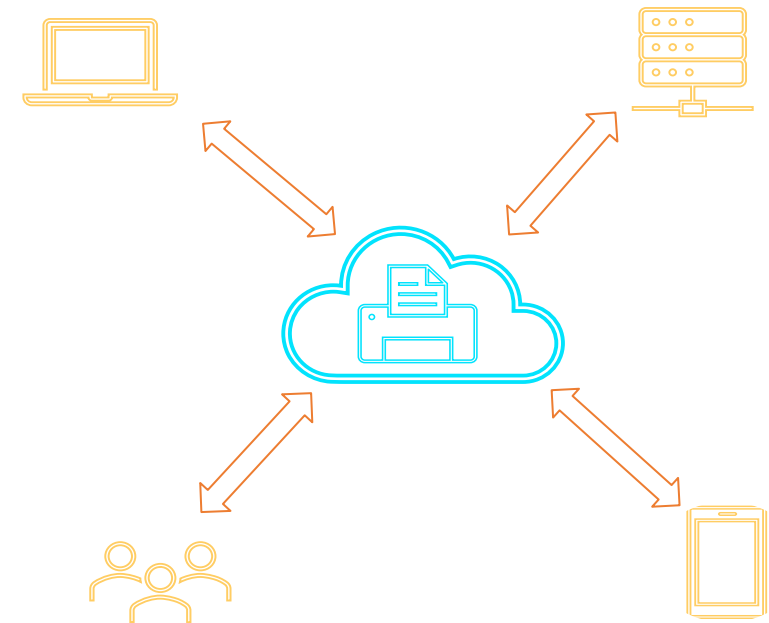
## Features

- Integration of secure cloud printing solutions
- Mobile network connectivity for printing from anywhere
- Enhanced document security and access control measures
- Streamlined workflow management
- Compatibility with a wide range of devices and platforms
- Customization options to align with organizational needs
- Integration with existing document management systems (optional)

## Benefits

- Improved document management and control
- Enhanced data security and confidentiality
- Increased workforce productivity and flexibility
- Cost savings through optimized print infrastructure
- Simplified printing processes across devices and locations
- Reduced reliance on physical infrastructure and storage
- Seamless collaboration and sharing capabilities

By leveraging our secure cloud and mobile network print solutions, organizations can transform their printing infrastructure into a secure, flexible, and efficient environment that aligns with modern workplace requirements.



# Why New Scaler?



## Our Experience

Our expertise in IT services includes business analysis, requirement gathering, solution design, and implementation within time and budget constraints.



## Our Strategy

From the initial discussion to solution delivery, we create trusted business relationships and enforce quality assurance to ensure a consistent client experience.



## What sets us apart?

We have lived the cloud evolution since its inception, keeping up with the latest technology, making us the best in the market when it comes to building and installing solutions.



HM Government  
**G-Cloud**  
Supplier

**APPROVED**



Crown  
Commercial  
Service  
Supplier **APPROVED**



## Our Customers



Department  
of Health &  
Social Care



Home Office



national  
highways



Sellafield Ltd



Driver & Vehicle  
Standards  
Agency



HSBC



Right  
Stones  
*creating stone trends*

## Our Partners



Microsoft



INCRAM<sup>®</sup>

Kaseya

TechData

Corent

AvePoint



# Let us help you deliver the full potential of your IT



 [info@newscaler.com](mailto:info@newscaler.com) |  [www.newscaler.com](http://www.newscaler.com) |  01628 274 301

 ONE St. Peter's Road, Maidenhead SL6 7QU