



myConsole LTD

**EMPOWERMENT, GUIDANCE,
TRANSITION, SKILL-BUILDING, AND
SUPPORT SERVICES
2024**

We put people and their needs at the centre of climate action design and delivery.

myConsole integrated approach aligns with the broader goals of embedding ESG and EU regulations considerations into organizations' strategic decision-making processes.

Philip Collard

COO & Founder

pcollard@myConsole.co.uk



Introduction

At myConsole, to tailor effectively our consulting and training services, we start by understanding our customers' unique needs and objectives. It involves conducting a thorough assessment of their organization's current capabilities, challenges, and goals in relation to ESG project management and reporting. From there, we collaborate closely with the designated teams to develop a customized plan that addresses your specific requirements.

Our seasoned consultants provide expert guidance on optimizing ESG initiatives, drawing upon industry best practices and innovative strategies. It may include assistance with designing and implementing effective project management frameworks, refining reporting processes to align with regulatory standards, and leveraging technology solutions for enhanced efficiency and transparency.

In addition to consulting, our training services are designed to empower your team with the knowledge and skills needed to excel in ESG management. We provide comprehensive training programmes tailored to different levels of expertise, from introductory sessions for beginners to advanced workshops for experienced professionals. These sessions can be delivered in various formats, including on site workshops, virtual seminars, and self-paced online courses, to accommodate our clients' team members' preferences and schedule.

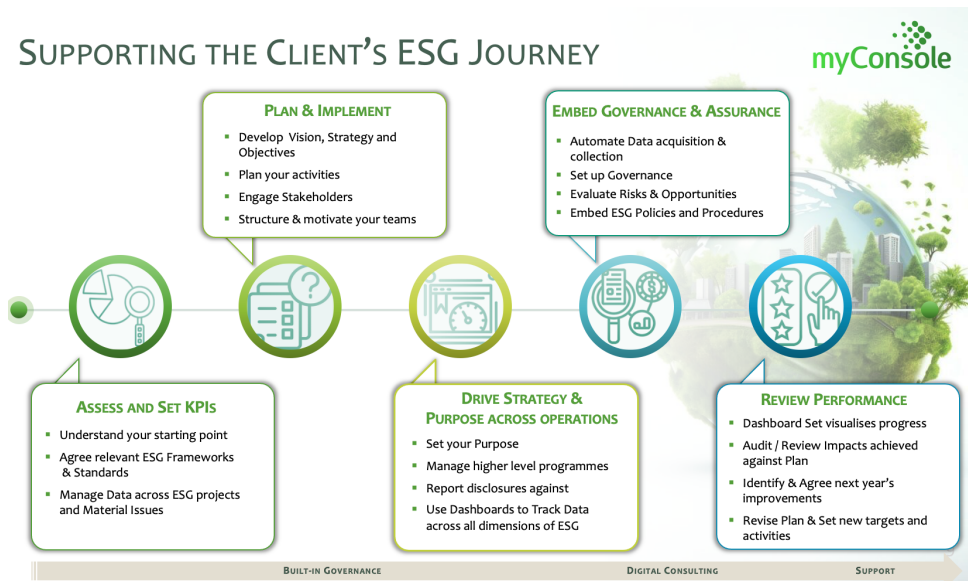


Our Engagement

Driven by a fervent dedication to innovation and excellence, myConsole aspires to establish itself as a purpose-driven leading figure in its technology industry, renowned for its pioneering products and services.

Animated by a team of talented consulting professionals, myConsole pledges to provide innovative solutions and advises for long-term impactful success.

Empowering Your Sustainability Journey



myConsole Consulting and Training for efficient Implementation and Adoption

A cost-effective integrated solution merging ESG implementation support with our ESG platform empowers you to instil a purpose-driven sustainability ethos.

You gain access to real-time insights and analytics spanning your ESG endeavours.

Our Support Team facilitates your ESG journey by guiding you through three key phases of ESG adoption:

1. Foundation Building

This initial phase involves laying down the groundwork for ESG integration within the organization.

It includes setting up policies, establishing baseline metrics, and raising awareness among stakeholders about the importance of ESG principles.

2. Integration and Improvement

The organization starts actively integrating ESG considerations into its day-to-day operations and decision-making processes.

It involves identifying opportunities for improvement, implementing targeted



initiatives, and continuously refining ESG strategies to align with evolving goals and stakeholder expectations.

3. **Optimization and Leadership**

As the organization matures in its ESG journey, it focuses on optimizing its ESG performance and demonstrating leadership within its industry and beyond.

This phase involves leveraging advanced analytics, engaging with stakeholders transparently, and driving innovation to address emerging sustainability challenges effectively.

Guidance and Tool Selection: Tailoring Your ESG Journey

Our advisors assist you through these stages at your own preferred pace and timeline, helping you in selecting appropriate tools for advancing to the next phase of your journey, when ready to proceed.

Our support programme helps organisations in managing their capacity to stay abreast of evolving ESG disclosure requirements, trends, and stakeholder demands for information.

- Efficiently capturing, curating, and processing quality data poses the primary challenge in implementing and embracing an ESG culture.
- Our ESG Support service will assist your designated ESG managers and administrative teams in initiating their ESG journey using myConsole.
- Our ESG Specialists will assist your ESG teams in kickstarting the process of defining, creating, and achieving your ESG culture adoption.
- They'll assist you in building and sustaining momentum, leading to the reporting and disclosure of your ESG and sustainability progress.

While our ESG Specialists guide your team through our 7-stage methodology, we can provide assistance across various areas.

We assist organizations in gaining command over their capacity to stay abreast of evolving ESG disclosure requirements, trends, and stakeholder information requests.

Empower Your Team: Harnessing Integrated Tools for ESG Engagement

Leverage our optional integrated tools to mobilize your broader team for ESG contribution, assigning them specific responsibilities such as:

- Establishing governance protocols at each project stage
- Personalizing risk types and categories to suit your needs
- Utilizing built-in risk factors for swift identification
- Implementing risk mitigation strategies with estimated costs
- Assigning risks to the appropriate team member along with due dates for action



- Introducing our optional Governance tool, designed to facilitate your personalized review process and ensure governance across every stage of your project lifecycle.
- Tailor each workflow step and sector with individualized reviews, supported by RACI governance for sign-off by project team members.
- Plus, benefit from a customized risk register pre-loaded with your specified risk types and categories.

Key Outcomes

Extend Access

Seamlessly broaden access to grantees, intervention partners, and stakeholders, fostering greater collaboration and engagement.

Build Impact

Elevate your capacity to construct impactful measurement capabilities, enabling precise evaluation of your initiatives' effectiveness.

Avoids Complex Data

Say goodbye to the headache of complex data collection with our streamlined survey tool, ensuring efficient and hassle-free data gathering processes.

Impact Data

Effortlessly capture impact data that perfectly aligns with your strategic objectives, facilitating comprehensive and insightful analysis.

Introducing myConsole's Integrated ESG Change Management Programme

- Embedded within myConsole platform is a comprehensive "how-to" guide for ESG/Sustainability Change Management.
- Teamed with our support solutions, it turbocharges your ESG team's efficiency and effectiveness in data capture, analysis, and reporting.
- This dynamic duo empowers your ESG managers and admin teams to kickstart their journey, maintain momentum, and remain firmly in control every step of the way.

Presenting myConsole's Integrated ESG Training Academy



- Discover on-demand explainer videos within the platform, offering step-by-step guidance on utilizing every integrated tool.
- Empower your team to instantly refresh their knowledge on platform functionality.
- Moreover, we're expanding our offerings to include broader on-demand training videos covering sustainability and ESG best practices.
- These resources aim to equip each myConsole user with deeper insights into the intricacies and significance of ESG and sustainability.
- By fostering individual empowerment, each user becomes a driving force in advancing your organization's broader ESG goals, objectives, and cultural adoption.

myConsole Consulting and Training Key Features

- Customized Approach: Tailoring services to meet unique customer's needs/objectives
- Thorough Assessment: Comprehensive evaluation of current capabilities, challenges, and goals
- Expert Guidance: Seasoned consultants offering expert advice and recommendations
- Optimization Strategies: Assisting in optimizing ESG initiatives through innovative strategies
- Designing and implementing effective project management frameworks
- Refining processes to align with regulatory standards and best practices
- Leveraging Technology for enhanced efficiency and transparency in ESG management
- Comprehensive Training Programmes different expertise levels for maximum impact
- Flexible Delivery Formats training sessions to suit preferences and schedules
- Dedicated ongoing support throughout to ensure a seamless customer experience

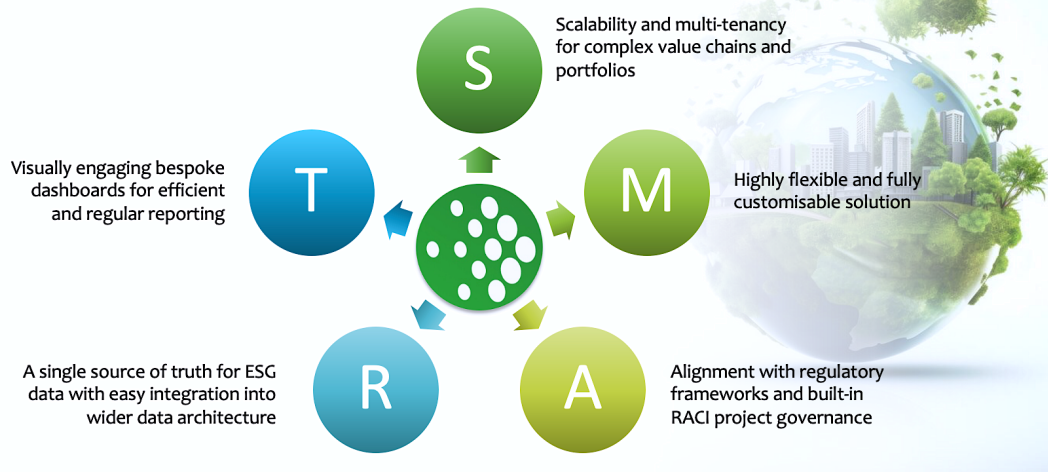
myConsole Consulting and Training Major Benefits

- Reputation Boost: Elevate organization's standing as sustainability leader
- Competitive Edge: Stand out with strong commitment to sustainability practices
- Investors Confidence: Attract investors through transparent, well-managed ESG initiatives
- Risk Reduction: Mitigate risks of non-compliance and reputational harm
- Cost Efficiency: Identify savings opportunities with streamlined sustainability processes
- Employee Engagement: Foster morale and retention with meaningful sustainability involvement
- Stakeholder Trust: Build credibility via transparent reporting and responsible practices
- Innovation Catalyst: Drive innovation by integrating sustainability into core strategies
- Regulatory Compliance: Ensure adherence to evolving ESG regulations and standards



- Resilience Enhancement: Bolster organisational resilience through sustainable business practices

YOUR SMART SOLUTION TO SWIFTLY MANAGE ESG AND OTHER REGULATIONS



Join us in shaping a sustainable future with myConsole Implementation Support.