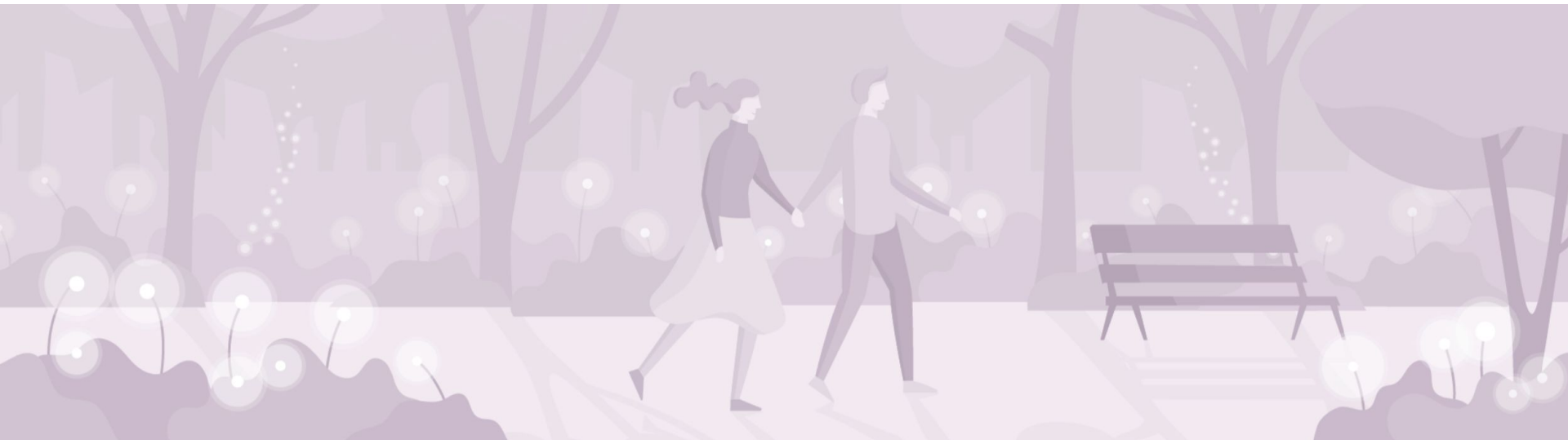


# GCloud 14 terms and conditions





# terms and conditions

When you work with Supercharge through this framework, we'll sort out the specific business terms using the standard G-Cloud 14 Call-off Contract, which you can find on the Digital Marketplace website.

For all the professional services we provide under this category, we won't add any extra Terms and Conditions beyond what's already in the standard Call-off Contract.

Just to make sure everything's clear, we've also included our standard pricing assumptions here, which you can also find in our Pricing Document.

# pricing notes

These rates are the maximum chargeable, and reductions to these may be applied..



## **Travel & Subsistence**

- ┘ We reserve the right to charge travel and subsistence expenses in addition to the SFIA rates. No expenses will be incurred for work undertaken in any of our office locations.

## **RPI**

- ┘ Supercharge reserves the right to review our Rate Card annually (31st March) in line with RPI.

## **Standards for consultancy day rate cards**

- ┘ Consultant's working day: 8 hours exclusive of travel and lunch
- ┘ Working week: Monday to Friday excluding national holidays
- ┘ Office hours: 9:00am to 5:00pm Monday to Friday
- ┘ Travel, mileage subsistence is payable at department's standard travel and subsistence rates
- ┘ Professional indemnity insurance: included in day rate

## **Payment Terms**

- ┘ Our pricing rate card assumes that all work undertaken will be on a Time-and-Materials basis with billing monthly in arrears based on actual utilisation. Our payment terms are 30 days from presentation of a valid invoice.

# we look forward to working with you!



## **contact information**

get in touch if you have any questions at all

- └ uksales@supercharge.io
- └ 2-4 Rufus Street, London, N1 6PE
- └ [www.supercharge.io](http://www.supercharge.io)