



# **G Cloud 14 Service Line**

## **Technology Summary**

**SmartCo Consulting**

May 2024



## Contents

Contents .....	2
SmartCo Overview .....	3
What we Offer .....	3
Our Services .....	4



## SmartCo Overview

### WHO WE ARE

We are a consultancy business that specialises in the delivery of complex digital transformation projects, operating in 12 countries with over 8,000 digital and technology specialists and 1,000 project and programme specialists globally.

### WHAT WE DO

Through some of the most experienced and knowledgeable delivery specialists the world over, we provide tailored solutions and services by working collaboratively with clients. We ensure each and every engagement is underpinned by our core values and approaches which are summarised to the right:



Established approach:  
quality, oversight,  
engagement & governance



Commercial innovation  
and value for money  
benchmarked



Strategically aligned, with,  
practices in Transformation and  
optimisation



Working in partnership,  
to your brand, methods  
and process



Culturally and values aligned,  
e.g. behaviours, social value  
innovation, CSR and D&I

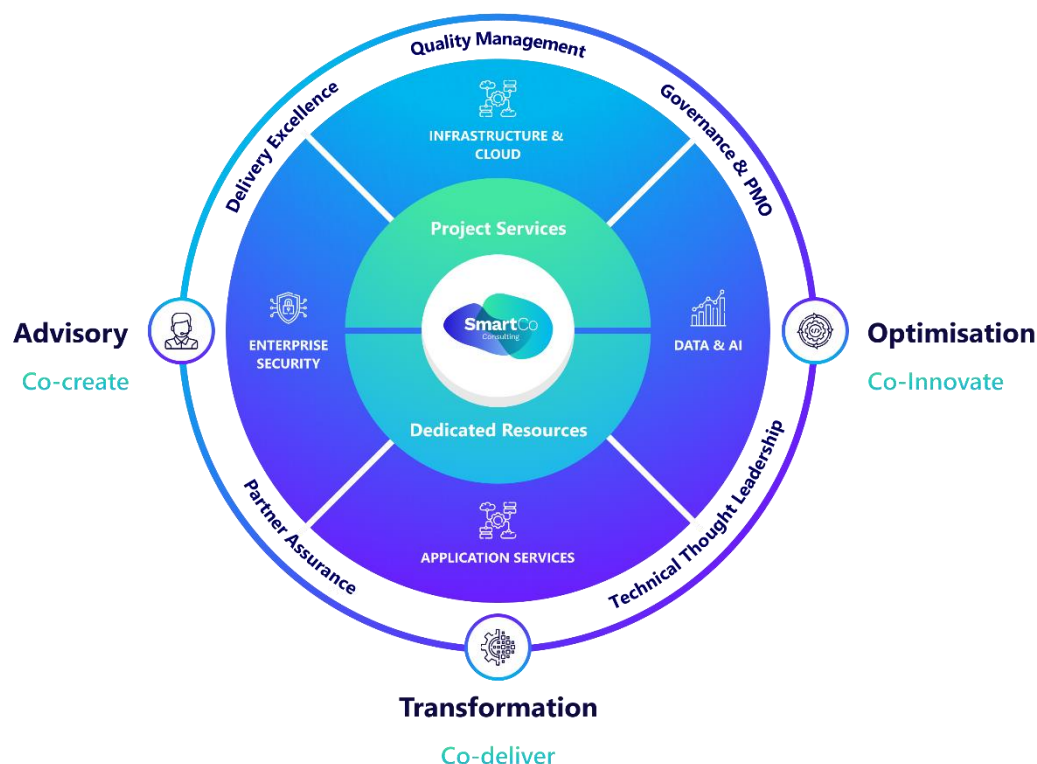


Carbon neutral  
in 2023

### What we Offer

At SmartCo, we aim to go beyond a vendor-client relationship. Our customer first approach coupled with our boutique focus allows SmartCo to provide a unique and personalised experience.

**Advisory:** Develop your organisations transformation strategy and financial business case justification. Define a target operating model supported by a current state analysis and identification of operational efficiencies. **Optimisation:** Maximise your investment to further drive efficiencies across your technology, people and operations. **Transformation:** Accelerate your transformation with flexible delivery, assurance and pace.



## Our Services

We support our clients throughout the project lifecycle, stretching from advisory through to the optimisation. We are also able to provide modular support, stepping in at any point throughout the lifecycle to provide support.

