



Embridge
CONSULTING

G-Cloud 14

Service Definition Document

Lot Three: Cloud Support

May 2024 | Version 2.0



Notices

Whilst every effort has been made to ensure this document is accurate and up to date, the information is subject to change without notice. Embridge Consulting (UK) Limited assumes no responsibility for any errors in this documentation.

All brand names, company logos and product names are trademarks or registered trademarks of their respective owners.

Copyright notice

Copyright © 2024 Embridge Consulting (UK) Ltd

Subject to the express provisions of this notice:

Embridge Consulting (UK) Ltd together with our licensors, own and control all the copyright and other intellectual property rights of the material herewith; and all the copyright and other intellectual property rights are reserved.

Copyright licence

You must not: reproduce this content in whole or in part; disclose, divulge, or otherwise make available to a third party; sell, rent or sub-license; redistribute material from this document, save to the extent expressly permitted by this notice.

Acceptable use

You must not: Use this documentation in any way that is unlawful, illegal, fraudulent, or harmful, or in connection with any unlawful, illegal, fraudulent, or harmful purpose or activity; You may only use this documentation for the Company or organisation it was intended for.



Contents

Embridge Consulting.....	3
ERP consultancy.....	4
Programme management.....	7
Embridge Managed Services.....	10
Products and technical development	13
Business Change and Organisational Development	22
Training.....	24
Partnerships and other services	26
Our accreditations: with Embridge, you're in safe hands	28
Embridge Consulting: your digital transformation specialist.....	30
Document management	31



Embridge Consulting

Founded in 2009 as an independent digital transformation consultancy, Embridge Consulting was born from a need to help businesses leverage modern technology that will transform the way they work.

With commitment to continual client improvement, we work with you to help you **achieve faster time to value** from your **transformation and change programmes**, at lower cost with lower risk.

As a boutique digital transformation consultancy, we specialise in supporting Public Sector, Private Sector, Education (HE and FE), Healthcare and Not for Profit organisations with an aspiration to support **impactful business transformation**.

Respected for our expertise in ERP, business change, and digital transformation, we provide strategic advice that address the people, process, and technology challenges that business face that together enable successful digital transformation outcomes.

We work with clients to **understand, design, and deliver pragmatic technology and learning solutions** along with robust **business change and digital adoption** programmes, using our proven business, project, and technical skills to ensure we exceed our clients' expectations.

As a business, we have developed a strong culture of purpose across our team and our core values runs through the heart of our business. We embrace innovation and pride ourselves offering new and effective ways of achieving successful digital transformation. We will be by your side, supporting, helping, and **empowering you as you take your next steps on your digital evolution journey**.



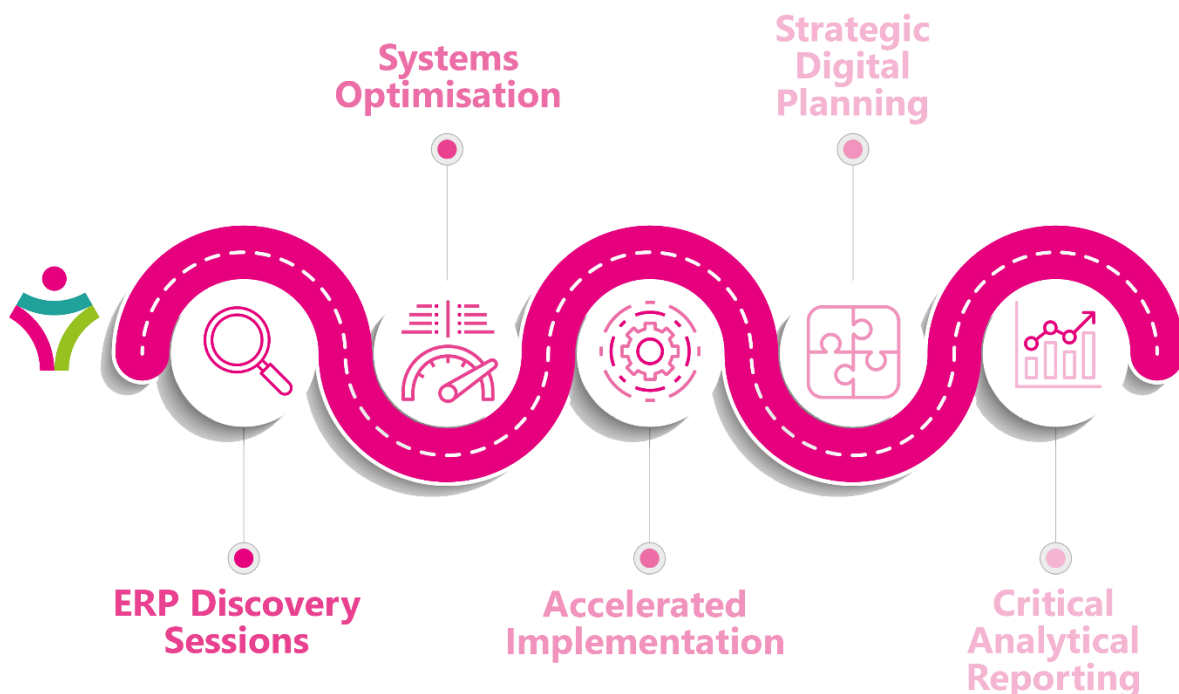
ERP consultancy

Expert advice connecting people, process, and technology

With **award-winning expert advice and guidance**, our ERP Consultancy will ensure that your system issues are identified, resolutions documented and recommended, and you have strategic and tactical help and support throughout your digital transformation journey.

We will be able to **help you identify scope**, establish **suitable platforms to support strategic and operational goals**, and **be on hand throughout the process** to ensure that you are achieving **true transformative benefits** that deliver to needs now and in the future. We'll be able to advise and guide you on ERP implementation and give you and your teams expert knowledge. **We'll help and support you throughout your vital programme of transformation.**

Use our strength in ERP, programme management, and digital transformation to your advantage. **We're motivated to help you gain real benefit from your ERP implementation** and will help you identify and realise modern, innovative technology that supports your strategic needs and delivers operational benefits.





Unit4 ERP Consultancy

As Elite Partner, we are **experts in Unit4 ERP across all modules and industries**.

Whether you are implementing Unit4 ERP for the first time, or you are an existing client looking for upgrade, system enhancement, solution health check, training, support, development, or exploration of functionality, we are there to help you and deliver your benefits and aims.

All of our consultants are **accredited across Unit4 ERP modules**, which means that with us, you are getting peace of mind that the team we will engage for you will be **knowledgeable, professional**, and above all, **experts at managing and delivering Unit4 ERP**.





Xledger Consultancy

We are **experts in the Xledger Finance solution across all modules and industries** and will leverage our expertise along with the value and benefits our services can provide to you in supporting achievement of your digital transformation goals. In partnership with Xledger, our Xledger Consultancy including implementation and support will bring structure and order to your finance processes and ways of working.

We have extensive experience delivering successful digital change, being knowledgeable of sector-specific challenges and needs, and understanding best practice for finance and accounting, as well as being able to effectively manage multi-stakeholder communications. As part of our ability to support your technology pathway, we want to empower your teams to take confidence from this project and feel assured as you continue onwards exploring wider technology innovations that can be leveraged to support modernisation and organisational proficiencies.

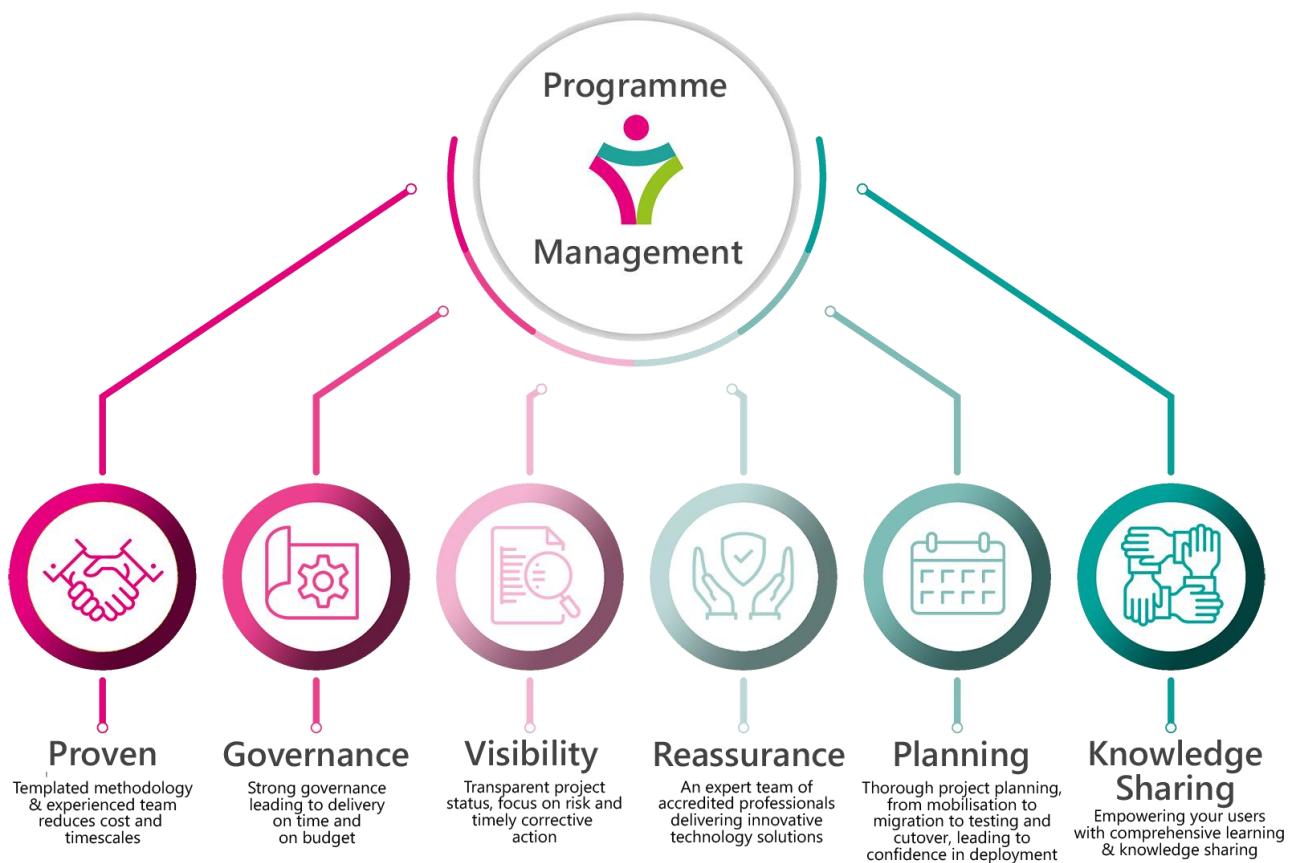




Programme management

Programme management is a **key strength** for Embridge Consulting. Our proven implementation methodology will ensure you receive a consistent approach which **delivers successful and high-quality outcomes**. Our transparent approach underpinned by robust programme governance and **ISO 9001 compliant quality management** means requirements are met and strategic aims are realised. We will work with you to ensure your digital transformation programme is delivered on time, on budget, and above expectation.

Here are some aspects of our Programme Management service:





Delivering benefit

We'll help you with **all aspects of programme management**, and provide expertise, guidance, and advice throughout your digital journey. We'll underpin all our activities with a global standard of quality management and help you to do the same.

We will work collaboratively with your teams throughout the transformation programme, **delivering a modern and innovative technology solution** aligned to your requirements and strategic aims.

We're on hand from start to finish, helping you achieve real benefit from your investment. We build lasting relationships, so that we're there with you as your digital future stops being a dream and becomes a reality.



Industry Model programme management

Embridge Consulting developed a powerful out-of-the-box ERP solution, Embridge Value Accelerator (EVA). This accelerator has become the blueprint for our **Industry Models**, meaning we can deliver **preconfigured Finance, Procurement, HR, and Payroll** functionality that gives you what you need at the greatest value. Delivering core modules with optional additional functionality, our alignment approach to design removes lengthy processes and decision making.



Based on best practice processes, our **Industry Model Programme Management methodology** quickens the time to value as **more is achieved in less time**. Our method uses a stepped approach to project phases, enabling measured, controlled, and transparent implementations. By being **capable and methodical in our approach**, we can ensure the quality and governance needed for the success of any project is provided at the core of every delivery.

The library of templates which we'll provide as part of our Programme Management Toolkit **guarantees our projects will have the governance and structure** that will enable a successful change. These include:

Templated solution design		Standard templated test scripts		Programme governance templates	
Validation tasks		Strategy and plan templates		Change control and risk management	

With Embridge Consulting, you get more than a service provider; you get a trusted partner.



Embridge Managed Services

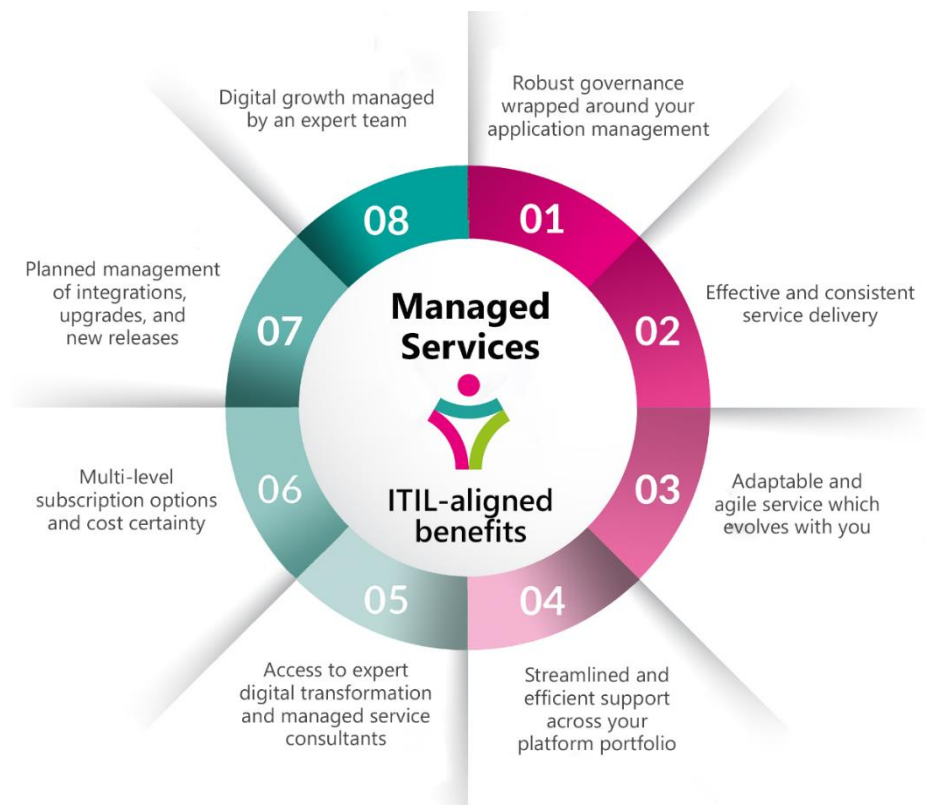
Our ITIL-aligned service management framework **focuses on quality performance and strategic business application support**, with best practice processes embedded within systems and ways of working as standard.

ITIL-aligned application support

Our **ITIL-aligned Managed Services** can provide your organisation with a skilled team of experts to holistically manage systems, enhance solution function, and allow businesses to succeed. We will **empower you to be ready for the future** with sustainable technology and practical on-hand support and expertise. We connect data, technology, and strategic aims in digital harmony.

We are passionate about delivering great results every time; it's part of our core values and makes us stand out from the crowd. We'll **help your teams work smarter**, taking advantage of the **latest technologies** available, and managing those in the most **efficient, cost effective, and consistently** strategic way.

By **choosing Embridge Consulting** as your Application Managed Services provider, you get a host of **benefits for your business** and your team. **These include:**





Optional services

We have a number of optional services which can be added onto our Managed Services packages. These include but are not limited to:

Onsite service management meetings		Choice of Level 1, Level 2, and Remote Consultancy Support	
Business change management		System Administration as a Service subscription package	
Training and SCORM-compliant eLearning		Environment management	
Advanced disaster recovery		Programme / project management	
Innovation analysis		Product development consultancy	
Service Level Agreement (SLA)		Digital adoption management	



Flexible Managed Services

We can provide flexible choices to meet what you need from a Managed Services provider. We are happy to discuss your needs and requirements in advance of engagement and agree add-ons or items from across the packages to create a bespoke model which fits your needs precisely.

Examples of Level 1 and Level 2 / Remote Consultancy	Level 1	Level 2	Remote Consultancy
User and role management	✓		
End user assistance	✓		
Chart of Accounts and Fixed register maintenance	✓		
Application Service Management	✓	✓	
Incident management and investigation	✓	✓	
Environment management		✓	
Functional configuration		✓	
Logging tickets and liaising with software vendor		✓	
Interface support *		✓	
Support roll out of new modules or functionality			✓
Continuous improvement initiatives			✓
Report amendments and development of new reports			✓
Review and road mapping of latest features and releases			✓
Test planning and management			✓
End user training			✓
Training support for updates and releases			✓
Test scripts and training collateral updates for new releases and software updates			✓
Interface development			✓

* Interfaces would need to be reviewed prior to being supported and, depending on scope and breadth of maintenance requirements for identified interfaces, there may need to be a separate support arrangement.



Products and technical development

Technical development: innovation consultancy at your fingertips

We provide expert consultancy services and solutions, **building modern, feature-rich integrations, extensions, and applications that deliver measurable results**. We provide innovative consultancy that our clients value, when they need it.





Products and solutions

As well as our bespoke development consultancy service, we offer a range of **products, solutions and apps created by our Technical Development team**. They will enable you to benefit from **preconfigured customisations** designed to address minor, but strategic, issues in your organisation.

Developed and built to **enhance user experiences** and **streamline business processes**, our solutions provide integrated end-to-end expanded functionality and automation to drive self-service, deliver insights, and provide contemporary solutions to solve client challenges.

Our technical solutions offer **great results, cost certainty and accelerated time to value** across a range of customisation categories.

Document Extractor connector

Our Unit4 ERP document extractor enables users to quickly extract archived documents from Unit4 ERP based upon a browser enquiry, supporting compliance and audit activities.

Unit4 ERP provides an integrated document archive facility which allows users to securely store electronic documents. Document archive spans the entire ERP system and supports the storage of documents against many indexes including but not limited to; master files, transactions and Unit4 forms.

But it can be time consuming to find and extract large sets of documents across multiple indexes. That's because, through the application, each document must be identified and downloaded on an individual basis.

Our Unit4 smart document extractor helps users rapidly extract documents into a data export folder. Based on a user defined browser report run from either desktop or web, customers have the flexibility to specify the documents / document they are looking for.



Recruitment connectors

We have a number of preconfigured Unit4 ERP and Hireserve ATS connectors available on a monthly subscription basis:

User connector

User Connector		System Requirements	
<ul style="list-style-type: none"> Master your Hiring Manager users in Unit4 ERP and automate the creation and maintenance of users in Hireserve ATS 		Hosting	Unit4 Cloud* Private Cloud On Premise <small>* Unit4 review required</small>
Product Features User defined queries in Unit4 ERP identify the people who need: <ul style="list-style-type: none"> User record created in Hireserve ATS (Hiring Manager) User record updated in Hireserve ATS (name, email) User record disabled in Hireserve ATS Intelligent runs the query and triggers a bespoke service process Web service call to Hireserve API to update/create user record		Unit4 Version	7.0 onwards
Product Benefits <ul style="list-style-type: none"> No manual updates to synchronise user records Greater access controls and governance Supports Single Sign On 		Unit4 Extension Kit	Not Required
Onboarding Up to 7.5 hours onboarding support included in subscription		Technical Support <ul style="list-style-type: none"> Bugs and Fixes 	

For details about monthly subscription fees, please see our Pricing document

Vacancy connector

Vacancy Connector		System Requirements	
<ul style="list-style-type: none"> Request and approve vacancies in Unit4 ERP and automate the creation in Hireserve ATS 		Hosting	Unit4 Cloud * Private Cloud On Premise <small>* Unit4 review required</small>
Product Features <ul style="list-style-type: none"> Unit4 ERP form and workflow used to manage vacancy requisition Bespoke screen maps fields from the form to Hireserve ATS vacancy fields User defined query identifies approved vacancies Intelligent runs the query and triggers a bespoke server process Web service call to Hireserve API to create draft vacancy record 		Unit4 Version	7.0 onwards
Product Benefits <ul style="list-style-type: none"> No manual updates to create vacancy Unit4 approvals leverage existing delegated authority Visibility of empty positions which are being actively recruited for Profile mapping supports dynamic requisition forms 		Unit4 Extension Kit	Not Required
Onboarding Up to 30 hours onboarding support included in subscription		Technical Support <ul style="list-style-type: none"> Bugs and Fixes 	

For details about monthly subscription fees, please see our Pricing document



Applicant connector

Applicant Connector

- Identify successful candidates in Hireserve ATS and onboard into Unit4 ERP

Product Features

Dependent upon status of the successful candidates, connector onboards into Unit4 ERP:

- External: Creates New Resource Record
- Internal: Updates Existing Resources Employment Record
- Rehire: Reactivates Resource Record

Data flow includes masterfile data, flexi fields, relations and documents

Product Benefits

- No manual updates to create or update resources
- Connector supports three onboarding scenarios
- Streamlined onboarding experience for all parties

System Requirements

Hosting	Unit4 Cloud Private Cloud * On Premise *
Unit4 Version	7.0 onwards
Unit4 Extension Kit	Required

* Unit4 Extension Kit Required

For details about monthly subscription fees, please see our Pricing document

Onboarding

Up to 37.5 hours onboarding support included in subscription

Technical Support

- Bugs and Fixes

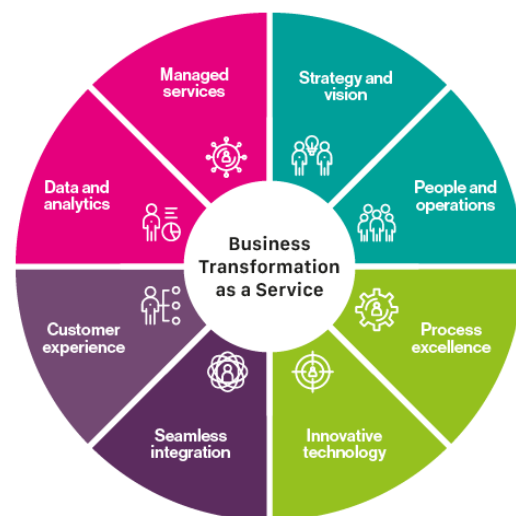
All connectors require a minimum two-year term subscription. Support covers bugs and fixes only. Please see our pricing document for more details on the monthly subscription fees applicable.



Business Transformation as a Service (BTaaS)

Our G-Cloud Business Transformation as a Service (BTaaS) brings together the critical solutions and services you need for true business transformation – in one package. It also takes the hassle, stress, and complexity out of the business transformation experience thus enabling you to get to where you need to go.

BTaaS enables customers under the framework to be able to consume our G-Cloud Lot 3 support services* on a volume discount basis by subscribing to BTaaS discount levels as shown below.



BTaaS Service Level	Volume Discount	Annual BTaaS contract level £
1	0.0%	Please see our pricing document
2	0.7%	
3	1.4%	
4	2.1%	
5	2.9%	
6	3.6%	
7	4.3%	
8	5.0%	
9	5.7%	
10	6.4%	
11	7.1%	
12	7.9%	
13	8.6%	
14	9.3%	
15	10.0%	
16	10.7%	
17	11.4%	
18	12.1%	
19	12.9%	
20	13.6%	
21	14.3%	
22	15.0%	
23	15.7%	

Payment terms - annual in advance 30 days

Minimum 2 year contract

*** Embridge Lot 3 Support Services only (excluding Lot 3 QTC Technical Managed Services)**



Data management solutions

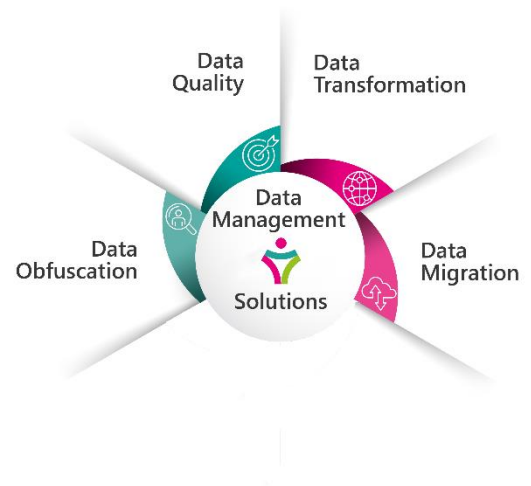
Embridge Consulting's Data Management Solutions will support your end-to-end data quality, transformation, and migration processes.

We have partnered with innovative and ground-breaking technology vendors to support your digital transformation, using our specialist knowledge and in-depth understanding of ERP and best practice business processes.

Combining Embridge Consulting's digital transformation skills, knowledge, and expertise with advanced and unparalleled data management technology and processes, we have created a unique and market-leading approach to data integrity, assurance, and quality.

In a world where data makes the world go round, we will help you move towards better data reliability and improve data security.

Our Data Management Solutions are powered through our partnerships with ground-breaking partner products, including GCON4's MFL and iConnect tooling.





Link, Expand, Optimise (LEO)

Our latest development innovation, taking your digital transformation another step further. Our LEO platform has been developed to help our clients take the next step in their digital evolution, **revolutionising system connectivity and integration across multi-platform technologies.**



Link

- **What:** LEO **links** backend systems, sources, files, and operational applications. End-to-end integration makes it possible to orchestrate business processes between on premise and cloud systems as well as third-party vendors in real-time.
- **How:** Through the implementation of well-defined interfaces, web services, and calls between applications and data sources which we provide as a managed service (Integration as a Service).
- **Why:** To support a more loosely coupled environment, safe from complex interdependencies, taking the pain and overhead out of integration.

Expand

- **What:** LEO **expands**, not just the core functionality of your existing system, but also the lifespan of your legacy systems by augmenting the core functionality.
- **How:** Event driven backend technology (using webservices and APIs) connects your existing systems with a fresh new front-end.
- **Why:** Adding features like mobile capacity or process driven UI / UX with Line-of-Business applications provides simple steps for existing complex processes, engaging user experiences or delivers new functionality that takes your solution even further.

Optimise

- **What:** LEO **optimises** tasks, through the automation of ad-hoc heavy-loads or daily repetitive actions.
- **How:** With process automation, connecting cloud / on-prem systems or edge devices (IoT).
- **Why:** To keep your team free for more constructive and exciting tasks.



LEO Integration as a Service

LEO can provide a service for bespoke connectors as well as a suite of standard connectors, each as a managed service.

Managed integration covering:

- ✓ Development and onboarding of flow.
- ✓ Extract, Transform, and Load (ETL).
- ✓ Support desk issue logging.
- ✓ Technical monitoring.
- ✓ Error reporting.
- ✓ Issue resolution.
- ✓ Minor upgrades.
- ✓ Minor changes to data mapping.

Bespoke connectors

Providing supported end-to-end bespoke connectors based on package level options, we can deliver a seamless integration as a service for your bespoke data connections as per the table below:

Level of Service	Max. integration flows *	Max. calls included per month **	Max. onboarding days***
Bronze	2	100	2 days
Silver	3	500	3 days
Gold	4	800	5 days
Platinum	5	1000	7 days

* A flow is defined as a message from source to destination exchanged via the capabilities of the LEO service. Any individual messages cannot exceed 1MB.

** A call is defined as the triggering of a flow.

*** The provision for onboarding effort is capped based on level of service. Additional onboarding effort can be purchased using the Professional Services rates as detailed within our pricing document.



Example bespoke connector

Integration	Integration flows	Description	Frequency	Max. monthly calls	Level of service
Service Desk to Finance system	2	Flow 1: Retrieve inbound transaction from ServiceDesk Flow 2: Transfer transaction to Finance system	Once daily Working days only (22)	44	Bronze
Recruitment ATS to ERP	4	Flow 1: Detect new candidate from ATS Flow 2: Retrieve candidate details Flow 3: Transfer candidate to ERP Flow 4: Transfer candidate documents to ERP	Once hourly (business hours) Working days only (22)	616	Gold

Bespoke connectors as part of Integration as a Service is a managed integration subscription-based service with a minimum 2-year term applicable. Subscription fees are payable annually in advance. We refer you to our pricing document for more details on fee rates.

Unit4 AI Invoice Recognition standard connector

Streamlining your Unit4 accounts payable process, our out-of-the-box preconfigured standard connector available through subscription, uses AI automation to streamline your AP processing in Unit4 ERP. Our connector will; transform your supplier invoices into one digitalised format, extract data, send it to Unit4 ERP along with the source document (invoice pdf) ready for three-way matching and where applicable, workflow approval.

What we'll deliver:

- ✓ PDF supplier invoices emailed to LEO.
- ✓ AI-based intelligent invoice capture extracts data (up to 10 pages).
- ✓ Invoices (and documents) loaded into Unit4 ERP.
- ✓ Automated two- and three-way matching if a PO is provided.
- ✓ AP workflow approval of invoice registration where applicable.
- ✓ Full managed connector.

We refer you to our pricing document for more details on bandings and pricing for the subscription.



Business Change and Organisational Development

Change management

Embridge Consulting always looks at the bigger picture. We will enable your organisation to learn and grow from your change initiatives, so you are in a better position each time a change is introduced. Effective change management enables people to **embrace, adopt, and engage** quickly and proficiently, and **minimises negative impacts** of change.

Discovering and understanding your organisation's readiness for change is crucial to planning the right approach. By looking at the bigger picture of what else is happening in the organisation, and what the change needs to align to, helps clarify the reason for change. This all contributes to the **realisation of intended benefits**. Embedding desired behaviours, processes, and working practices **reinforces change well beyond go live** and is key to **sustaining change**.

We can ensure a **sustainment plan and knowledge transfer** is undertaken to enable our clients to achieve short-, medium-, and long-term objectives, delivering return on investment and achievement of change.

Successful change management applies tools and frameworks that will **enable your employees to make a change**. With our Prosci methodology for change management, along with our combined experiences and insights, our Prosci certificated Business Change & OD Consultants work collaboratively with project teams to ensure you have what you need in place. We will enable your employees to make a change, and **sustain that change for the future**.





OD interventions

Discovering and understanding where an organisation, service, or team are now, looking at what else is happening and understanding where they want to move to is a key part in determining our approach and work with our clients.

By collaborative working methods, sharing findings and co-designing interventions, we help clients plan how to **deliver interventions and create action plans**.

Throughout our work, we adapt our approach to ensure others can engage, develop, and benefit from interventions. We help clients bring to the surface ideas and plans for bringing the change to life, applying a **people-focused** and **systematic approach** to **improving performance and enabling change**.

Our Business Change and Organisation Development services can include:

Change readiness		Business change planning		Business Change Toolkit	
Business change management delivery		Building change capability		Target Operating Model (ToM)	
OD strategy and planning		Case for Change development		Benefits management enablement	



Training

Training

Delivered by our expert training professionals, we will help build your teams' confidence and capabilities through **modern training methods** and relatable, relevant content. Our Training services are key enablers for **effective, efficient, and proficient use of technology** and solution platforms. We'll embed best practice processes and compliance in your organisation's day-to-day working.

Our training experts will support your impacted groups and provide step-by-step guidance that delivers understanding and adoption. We'll align people, process, and technology through **empowered learning**, building user confidence in your solution. Our learning and development journey for your team will engage them from the project's commencement, **ensuring positive adoption and user enablement** through confident skills and capability building.

We can provide a range of training services and materials to support your team:





Unit4 ERP training

Known for our **expertise in Unit4 ERP and training delivery**, we have a suite of standard Unit4 ERP training courses available. Whether through our public courses, or delivered for individual client teams, we are on hand to **provide the knowledge your people need** to proficiently use functionality and have confidence in their day to day working activities.

Our Unit4 ERP training will **deliver comprehensive knowledge transfer and skills capability** that empowers your teams **to get the best from your solution** and your investment.

Use this web link to visit our Training area: <https://embridgeconsulting.com/services/training>

Industry Model training

We will provide a suite of training from our portfolio of Premium Education Unit4 courses as standard for our Industry Model clients, **familiarising teams** on Unit4 systems to **enable informed decision making** during design, and delivering in-depth System Administrator and Super User Training to **facilitate expert knowledge build** within your teams. We refer you to our pricing document for more information on our Professional Services rates including Training.



Partnerships and other services

At Embridge Consulting, we seek out the best and most ground-breaking technology partners to bring new heights of transformational possibility to our clients.

Here are some of our technology partners, bringing trusted assurance and confidence that with Embridge Consulting, we are able to deliver true digital evolution and future-ready technology landscapes for you.

Unit4

A global software vendor, Unit4 offers enterprise solutions in a SaaS delivery model, deployed on Microsoft Azure platform, providing mid- to large-size organisations with innovative and user-friendly Finance, Procurement, HR, and Payroll functionality, underpinned by highly secure, scalable, and protection-compliant cloud services. Embridge Consulting has a strategic relationship with Unit4, working together successfully since our business was founded in 2009. Our CEO works closely with the both the Regional and Global Leadership teams at Unit4, ensuring our services and offering complements and continues to provide value to the Unit4 client base.

We are an Elite Partner of Unit4, and all our consultants are fully certified across the suite Unit4 modules and software. Unit4 certifications are available to all Unit4 partners, and we are very proud to hold the highest number of certifications achieved.

Xledger

Xledger is a leading provider of cloud-based finance software for mid-market organisations, providing businesses a comprehensive and unified cloud finance software which empowers its customers with automation, insight, and scalability.

Xledger's approach to customer success, and its investment in its team, along with the fundamentals of their core ethos, creating a supportive, positive, and dynamic organisation, marries with the Embridge Consulting principles of empowerment, excellence, innovation, and creativity embedded at all levels throughout the company. This meeting of organisational minds has set a solid and sustainable bedrock for a partnership that provides trusted assurance for the achievement of collaborative goals for our clients and their teams.














Proactis

Bringing cloud-based SaaS solutions for procurement control, Proactis solutions were designed from the ground up to be modular, agile, and highly configurable platforms bringing Source to Contract solutions such as Supplier Relationship Management, Sourcing and Contract Management. Our strategic and collaborative partnership with Proactis ensures that we are able to help our clients enhance, modernise, and automate the end-to-end procurement processes. Designed to be simple, intuitive, and easy to use for all levels of user, our partnership allows our clients to achieve method, best practice processes, and comprehensive functionality to address all their procurement system needs.

GCON4

Embridge Consulting is a partner of GCON4, being reseller for the GCON4 innovative tools, such as the GCON4 MFL or iConnect tools developed by GCON4 with the intention of helping Unit4 clients to streamline and greatly reduce the time it takes to perform data migration. The GCON4 tools provide an easy, fast, and safe method of migrating and updating huge volumes of data to Unit4 ERP, integrating between legacy systems and Unit4 ERP to ensure accurate data migration.

Here's a snapshot of our partners and the services Embridge Consulting can bring to you in partnership with these pioneering and modern technology solutions:

Partner	Software / technology reseller	Implementation partner	Other value-add service provider
Unit4			
Xledger			
Proactis			
GCON4			



Our accreditations: with Embridge, you're in safe hands



ISO 9001 is a globally recognised standard designed to support an organisation's fundamental requirement for consistent Quality Management processes. By maintaining an externally certified quality policy, we commit to continually improving quality performance, using modern technologies and processes, and displaying our compliance with regulations applicable to our services and products.

Our Quality Management System underpins all our activities and outputs. Our internal processes are audited using external consultants and we continue to promote improvement of processes through our internal audit function.

ISO 14001 is a globally recognised set of standards which clarify the best practices for organisations that wish to reduce their environmental footprint by adopting an effective environmental management system (EMS).

Embridge Consulting is committed to environmentally sustainable approaches to working and providing services, and we take all steps we reasonably can to minimise or remove any negative effect to the environment. Our internal processes are audited using external consultants and we continue to drive improvement of environmental sustainability through our internal audit function.



ISO 27001 is a globally recognised information security standard which provides the specification for best-practice information security management systems ('ISMS'). It is supported by its code of practice for information security management. By having best-practice ISMS, we provide a systematic approach to processes, technology, and effective risk management. Our certification supports our compliance with applicable legislations, including the EU / UK GDPR and other key data protection and cyber security laws.

Embridge Consulting is committed to information security management across all our client engagements, internal systems, and processes. Our internal processes are audited using external consultants and we continue to promote improvement of security and risk management through our internal audit function.

Cyber Essentials is a scheme introduced by the National Cyber Security Centre to help organisations reassure their clients that cyber security is taken seriously and that we are committed to having security measures in place.





Embridge Consulting is an official **Elite Partner of Unit4**.

- When partner levels were launched in 2020, we were the 1st Elite Partner of Unit4 in UK & Ireland
- We have maintained Elite Partner status continuously since the partners levels were launched
- At Global Partner Forums in 2020, 2021, 2022, and 2023 we have been awarded Global Number 1 Partner of the Year, Commercial Co-Sell Partner of the Year, Service Delivery Partner of the Year, and Sales Partner of the Year
- Unit4 SI Partner
- Our consultant team is certified across all modules of Unit4 ERP



**Crown
Commercial
Service**
Supplier

The **GCloud Government Framework** in the UK enables UK government organisations access to cloud software, suppliers, and hosting without the need to issue lengthy tender processes. Embridge Consulting is proud of its inclusion in this framework as a supplier to GCloud cloud hosting, software, and services since 2016, retaining its status on this framework year on year.

We are **Disability Confident Employer**. As a Disability Confident business, we are committed to challenging attitudes towards disabled people in employment. This means that we are committed to challenging attitudes towards disability, we provide inclusive and accessible recruitment to all and support existing employees who have or develop disabilities during their careers. We are proud to be #DisabilityConfident and support fair and equal treatment, overcoming inequality and helping to bridge the gaps and allow people opportunity to realise their full potential.



Social Enterprise UK ('SEUK') is the leading global authority on social enterprise. It is the biggest network of social enterprises in the UK and the strategic partner to 6 government departments, leading public policy on social enterprise for 15 years. Embridge Consulting is proud to be a Supporting Member of the Social Enterprise UK, partnering with and supporting social enterprise and increased social value in local and national communities across the UK.

The **Digital Outcome and Specialists Framework** is a dynamic-style framework with the specific aim of helping the public sector buy, design, build and deliver digital outcomes using an agile approach, by procuring the appropriate specialist resource to deliver agile software development. Embridge Consulting became a Digital Outcome and Specialist Supplier on the framework in 2016, and has retained its presence on the Framework year on year since joining.

**Digital
Outcomes &
Specialists
Framework**

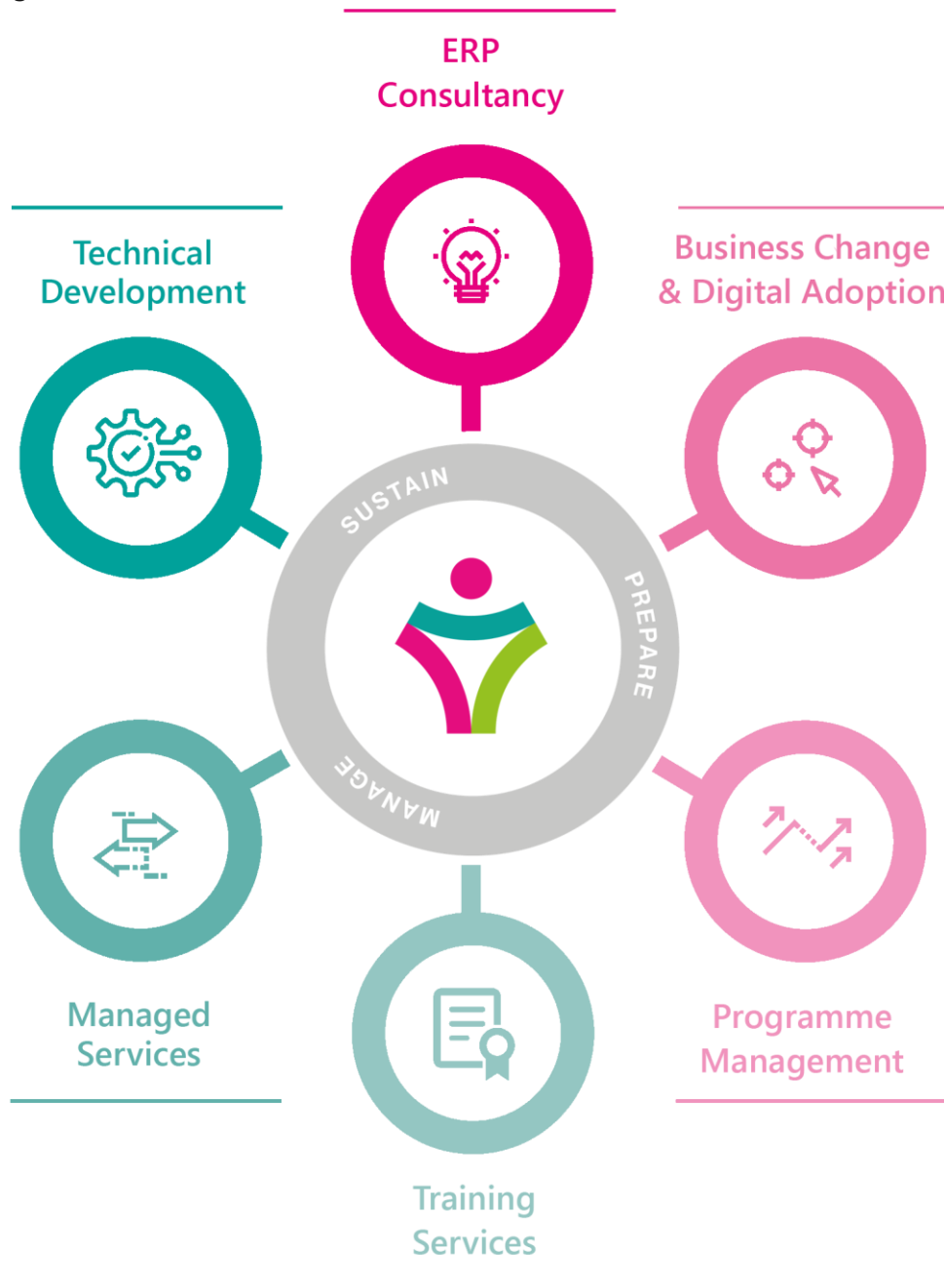


We are an accredited supplier on the **Bloom Procurement Framework**. The Bloom Framework allows customers across the Public Sector (Central and Local Government, Health and Social Care, Blue Light, Higher Education, Housing Associations, and Schools and Academies) to drive efficiencies and achieve their strategic goals by giving them greater supplier choice and access to the latest thinking. Bloom allows customers the best choice of small and large suppliers.



Embridge Consulting: your digital transformation specialist

We offer a **broad range of services** with experts in many fields. We can offer any service you would expect directly from the vendor, coupled with additional **added-value services** that are delivered using the methodology of true professionals and philosophy of our Embridge Consulting ethos and values.





Document management

Version control

Version	Date	Author	Reason for amendment
0.1	11.04.2024	EN	Creation of first draft
0.2	18.04.2024	EN	Updates
0.3	26.04.2024	EN	Updates
0.4	02.05.2024	EN	Updates
0.5	03.05.2024	Various	Approval
1.0	03.05.2024	EN	Version finalisation
2.0	07.05.2024	EN	Update to partner information

Contact points

Email and telephone:	enquiries@embridgeconsulting.com T: +44 (0)1474 555 505
----------------------	--