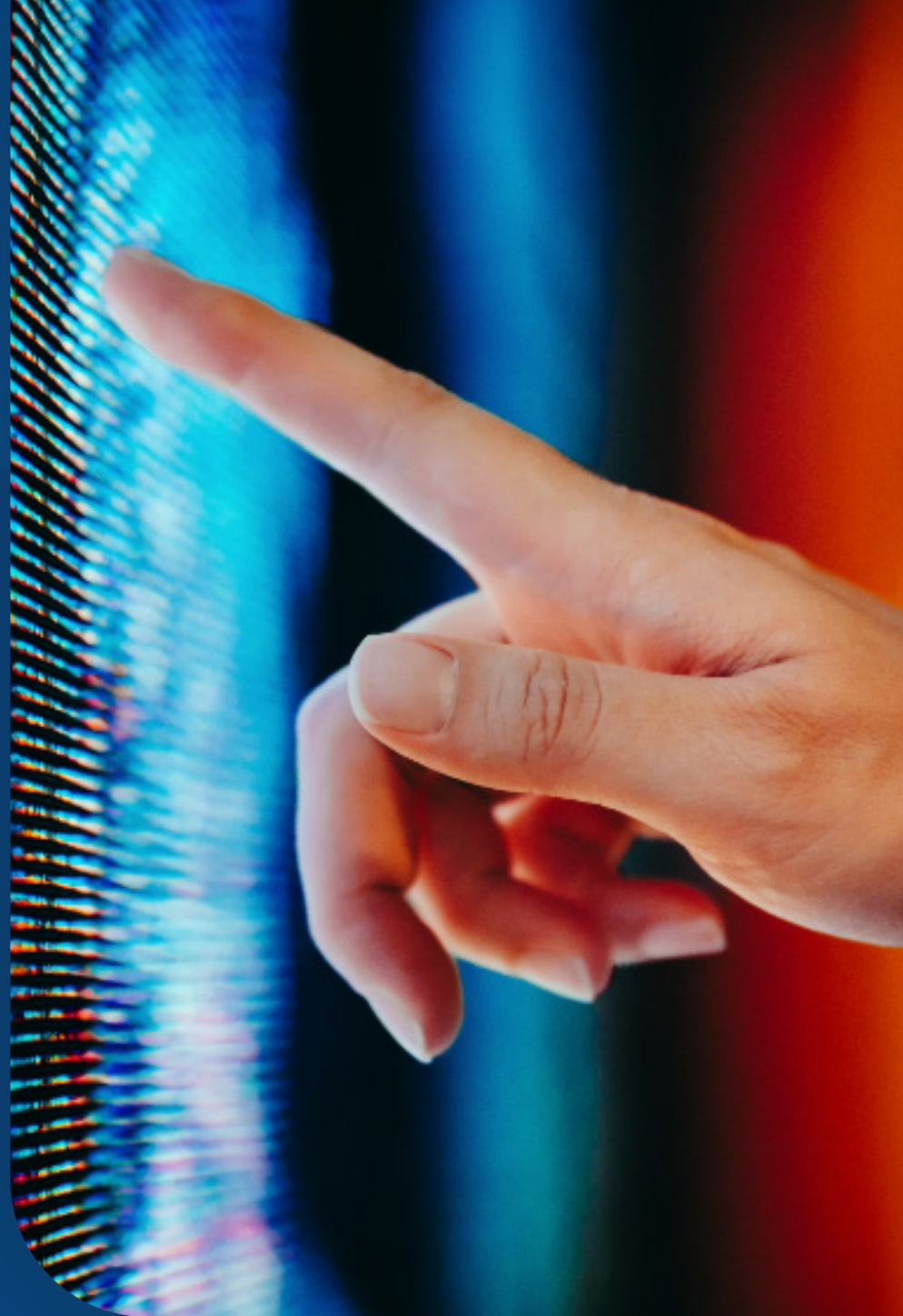


cyberlab

Cyber Essentials





Cyber Essentials is a government-backed initiative to help businesses just like yours to protect against the most common cyber threats.

Originally launched in 2014, over 120,000 certificates have since been awarded to businesses of all sizes across the country.

Get Cyber Essentials Certified

Show you're serious about cyber security and prevent security incidents by achieving Cyber Essentials with CyberLab.

A Cyber Essentials certification can help you to formalise your security, engage your employees, set your organisation apart from competitors, and decrease your cyber insurance premiums.

Not only is CyberLab an authorised Cyber Essentials assessor, we are also able to provide bespoke consultancy services to assist your team in meeting and maintaining the high standard of security required. With our expert advice, you'll pass first time.



80%

of attacks can be mitigated
with Cyber Essentials

The Process: Five Technical Controls

The Cyber Essentials scheme addresses five key controls that, when implemented correctly, can prevent around 80% of cyber attacks:



Firewalls

Creating a buffer between your network and external networks, a firewall protects your network by analysing incoming traffic to identify whether to grant access to your network.

Cyber Essentials requirement - a firewall must be configured and used on all devices, particularly those connected to public or untrusted Wi-Fi networks.



Secure Connection

Default configurations can create vulnerabilities if left unchanged. Settings are checked, removing unnecessary functions, default passwords should be updated and two-factor authentication should be used for data sensitive accounts.

Cyber Essentials requirement - only necessary software, accounts and applications are used.



User Access Control

In allowing access to those – and only those – accounts (software, settings, services, and functions) that your people need in their specific job role, the risk of potential damage can be minimised.

Cyber Essentials requirement - access to your data must be controlled through user accounts, with controlled administration level privileges given only to your people who specifically need them.



Malware Protection

Malware can be introduced to a network when a rogue application is downloaded, so whitelisting and sandboxing can help to keep your data beyond the reach of malware.

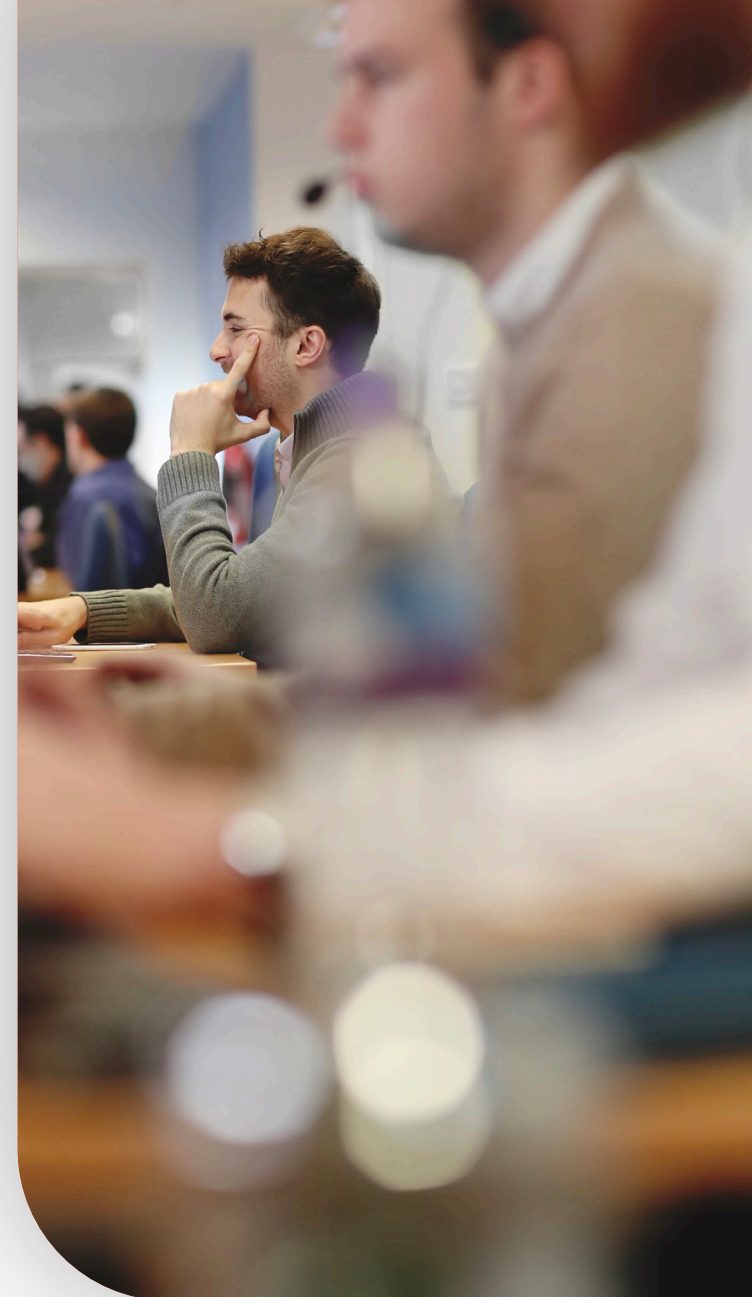
Cyber Essentials requirement - at least one approach, anti-malware measures, whitelisting or sandboxing must be implemented.



Patch Management

To keep patches up to date, your systems and applications should be set to “automatically update” where possible. When no longer supported, systems and applications should be replaced.

Cyber Essentials requirement - devices, software and apps must be kept up to date.



Benefits of Choosing CyberLab

Expert Support When You Need it

Cyber Security incidents can be confusing, complicated, and stressful. Having an experienced specialist at the end of the phone who can understand the urgency of the situation and provide useful guidance on best practice and direction is invaluable.

Assistance With Vendor Cases

Many customers are left with vendor support that only functions via email. Frequently, this means that support cases take much longer to progress and resolve. You can leverage our top-level partner relationships with the security vendors to move these cases to resolution quicker by escalating support cases where necessary.

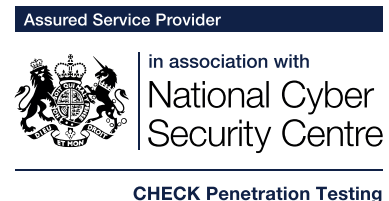
Advice You Can Trust

Making routine changes to complex cyber security product configurations can be daunting. CyberLab Standard Security Support provides a trusted advisor who can listen to the requirements and help guide the decision process on how reconfigurations should and need to be applied.

Ease of Contact

Unlike most vendor support offerings CyberLab Standard Security Support provides the option to contact the support team via phone or email. We understand that being able to speak to an actual human who understands your situation is more appealing and less frustrating than working solely via email.

cyberlab



CHECK Penetration Testing



Our People. Our Platform. Protects You.

CyberLab is a specialist cyber security company that provides a wide range of security solutions and services.

Your one-stop cyber security advisor, the CyberLab team is equipped with the right technology, knowledge, and expertise to help businesses of all sizes, including large public sector organisations.

By leveraging world-class technology, decades of experience, and our vendor partnerships, we have helped to secure thousands of organisations across the UK.

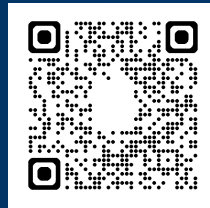
Our unique Detect, Protect, Support approach makes us the perfect partner to review and reenforce your cyber security defences.

Speak With an Expert

hello@cyberlab.co.uk | 0333 050 8120 | cyberlab.co.uk



Find out more at cyberlab.co.uk



cyberlab
cyberlab.co.uk