

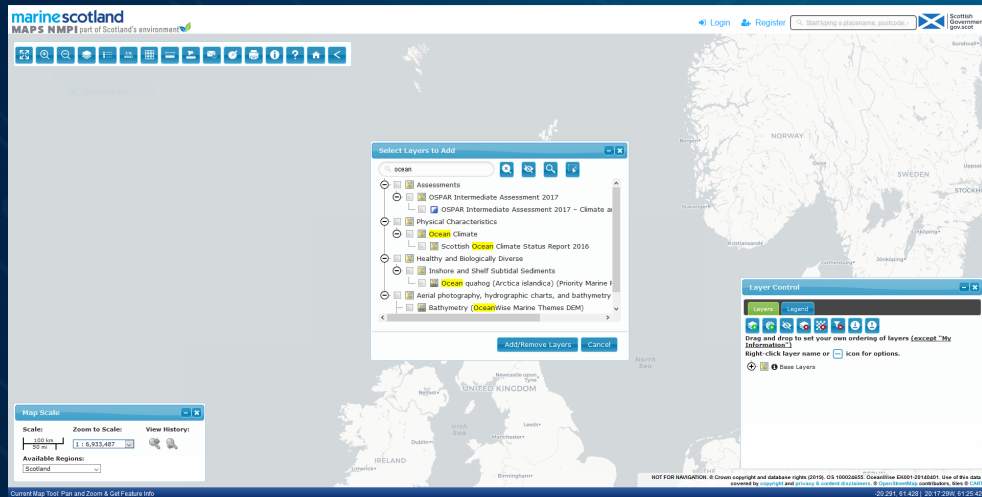
CIRRUSmaps™ Web Mapping Platform

ATKINS
Member of the SNC-Lavalin Group



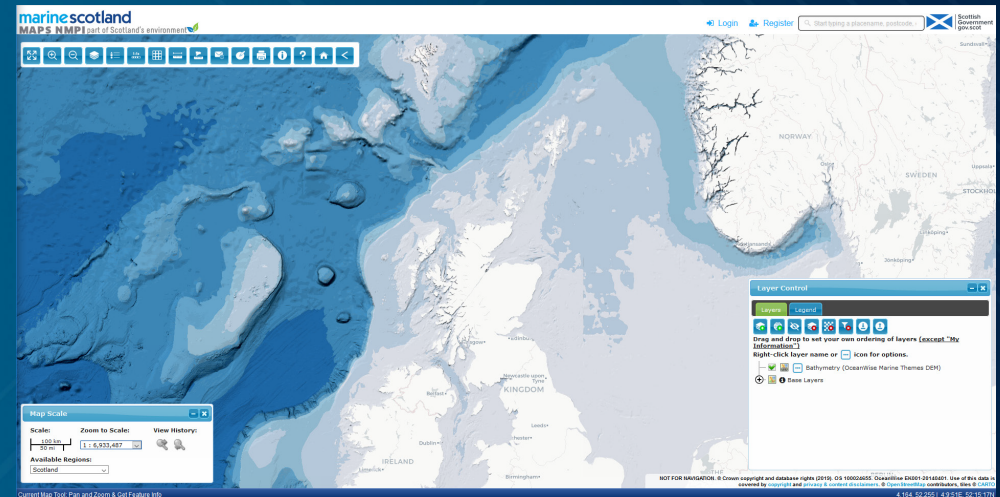
WHAT WE DO

CIRRUSmaps™ from Atkins is a flexible web based mapping platform providing access to scalable and configurable location based data. Using the best open source software, CIRRUSmaps™ lowers the cost of ownership for a web-based GIS and enables monetisation and location based data to be turned into valuable business information.



WHY US?

Efficient management of geospatial information is fundamental to the success of projects across the private and public sectors; underpinning a wide range of activities, from sustainable development, conservation and environmental monitoring to infrastructure planning and implementation or asset management. Atkins specialise in the capture and use of geospatial data, developing geographical information applications to enable our clients to make the most of their spatial data to realise the full benefits of GIS through our tools, professional advice, support, management, and maintenance services.



COMPANY DETAILS

SNC-Lavalin's Atkins business is one of the world's most respected design, engineering and project management consultancies. Together, SNC-Lavalin, a global, fully integrated professional services and project management company, and Atkins help our clients plan, design and enable major capital and digital transformation work, as well as and providing expert consultancy that covers the full lifecycle of projects.