

# Ledidi Core

Ledidi AS is a software company that delivers software solutions for use in clinical practice, research and health registries. Ledidi's services are delivered as SaaS solutions in an international market, and is used in research projects and medical registries in Norway, the Nordic countries, Europe and the USA, including major transatlantic cooperation projects.

The main product, Ledidi Core, is an end-to-end registry solution with integrated functionality for statistical analysis, and graphical data visualization and reporting. The user interface is modern and seamless, and facilitates the user to be able to do everything themselves. The solution is designed to cover the needs of healthcare professionals and clinical researchers for computing and analysis in young and old health records, and facilitates effective collaboration within projects, both in single center and multicenter national and international research projects. Thus, Ledidi Core can cover the needs in everything from smaller registers at department level to collect, make available and analyze data in daily clinical activities (e.g. complication registry for a surgical department), up to the needs of in comprehensive research projects that combine clinical data with omics data.



The system architecture has been developed to seamlessly integrate with other systems.

The solution is designed with a special focus on collaboration – both internally at institutional level, and in multicenter studies across institutions and national borders. A particular challenge in multicenter cooperation is international projects that go across regions with different privacy laws (e.g. transatlantic cooperation between European centers subject to the GDPR and American research institutions subject to the HIPAA regulations). The functionality of Ledidi Core has been developed in accordance with the general requirements of the GDPR (Articles 25 and 32 – data security and privacy by design and by default) and in accordance with the specific guidelines from ENISA for this type of solution (including

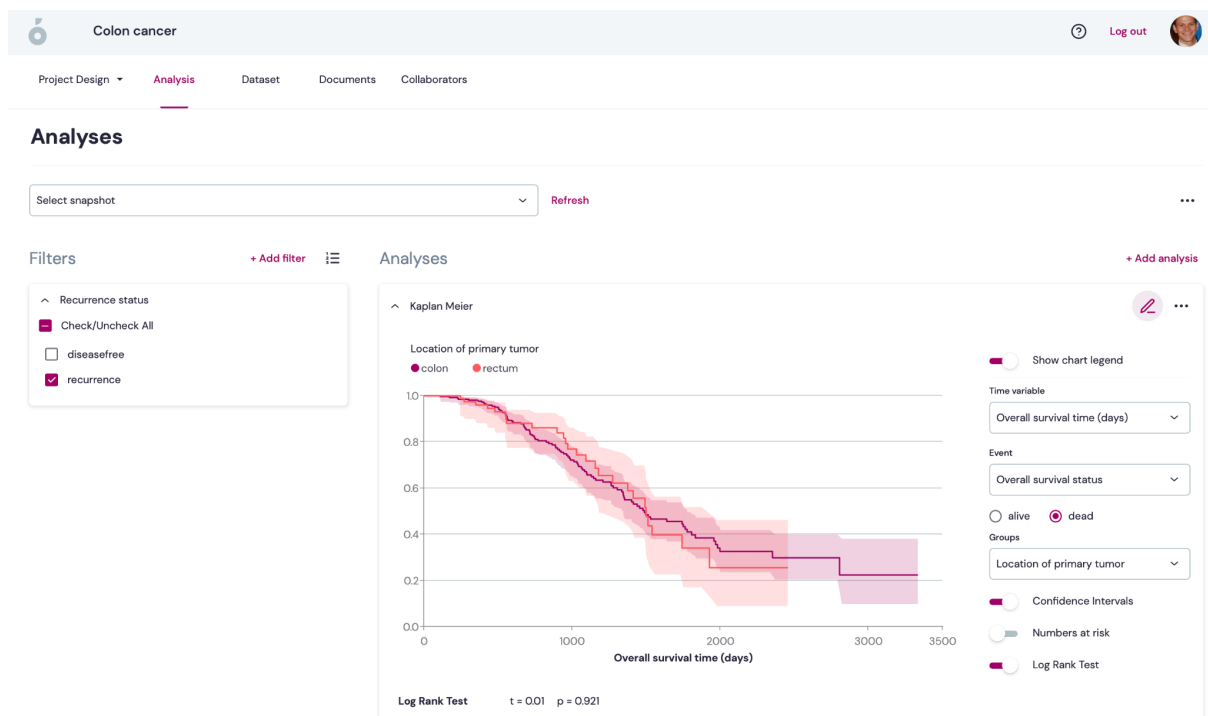
<https://www.enisa.europa.eu/publications/data-protection-engineering>). This makes it possible to carry out many research projects that today are practically difficult, or partly impossible, to implement with other available software solutions.

	View data	Edit data	Analyze
Own data	<input checked="" type="checkbox"/>	<input checked="" type="checkbox"/>	<input type="checkbox"/>
Center data	<input type="checkbox"/>	<input type="checkbox"/>	<input type="checkbox"/>
All data	<input type="checkbox"/>	<input type="checkbox"/>	<input checked="" type="checkbox"/>

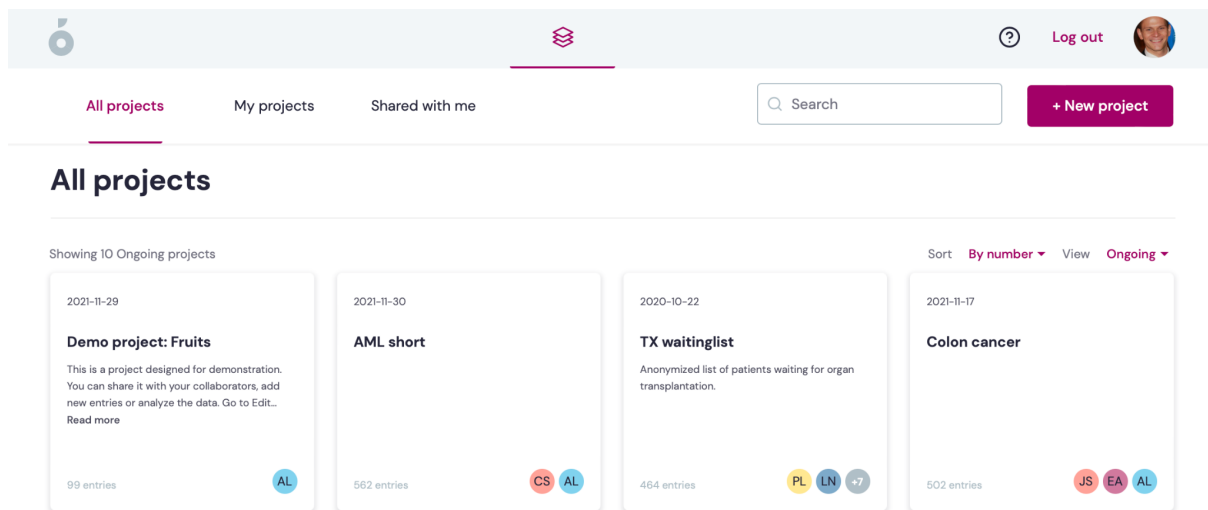
- Allow export of data
- Allow access to restricted variables
- Allow editing of variables
- Allow editing of project information

The user interface is modern and intuitive with a very low user threshold. No installation or adaptations are required to be able to use the solution, and the solution is adapted to all modern browsers and screen sizes. The solution will in most projects be able to eliminate or significantly reduce the need to store raw data on local systems, and thus minimize the risk of sensitive information going astray. The security of the solution is ensured in accordance with international standards for encryption, access control, login protocols and system architecture.



All customers have access to free technical support. User guides in the form of help texts and video material with a full description of all functionality is easily accessible to all users. Ledidi also provides scientific support as a paid service in the areas of study and project design, database structure, statistics and research collaboration.

Ledidi's solutions are in operation and can be used immediately, and Ledidi Core is currently used by many Norwegian health trusts for internal registers and research projects and in national and international multi-center collaborations. Ledidi's solutions are also used at several hospitals and research institutions in the Nordic countries, UK, Europe and the USA.



The screenshot shows the Ledidi web application interface. At the top, there is a navigation bar with the Ledidi logo on the left, a search bar in the center, and a 'Log out' button and user profile picture on the right. Below the navigation bar, there are three tabs: 'All projects' (selected), 'My projects', and 'Shared with me'. A '+ New project' button is located to the right of the search bar. The main content area is titled 'All projects' and shows 'Showing 10 Ongoing projects'. There are four project cards displayed, each with a title, a brief description, the number of entries, and a set of colored circular icons representing collaborators. The projects are: 'Demo project: Fruits' (99 entries, AL icon), 'AML short' (562 entries, CS, AL icons), 'TX waitinglist' (464 entries, PL, LN, +7 icons), and 'Colon cancer' (502 entries, JS, EA, AL icons). The interface also includes sorting and view options at the top right of the project list.

The team behind Ledidi has extensive experience in clinical and molecular medical research at Norwegian and foreign research institutions, and have extensive expertise in managing major private and public IT projects, application development and development of cloud solutions with handling of sensitive personal information. Ledidi has active partnerships with Norwegian innovation environments, and participate in research projects and development projects together with Norwegian and foreign academic environments and innovation companies.

Please visit <https://ledidi.com> to learn more about Ledidi and Ledidi Core.