

Software solutions for transport management

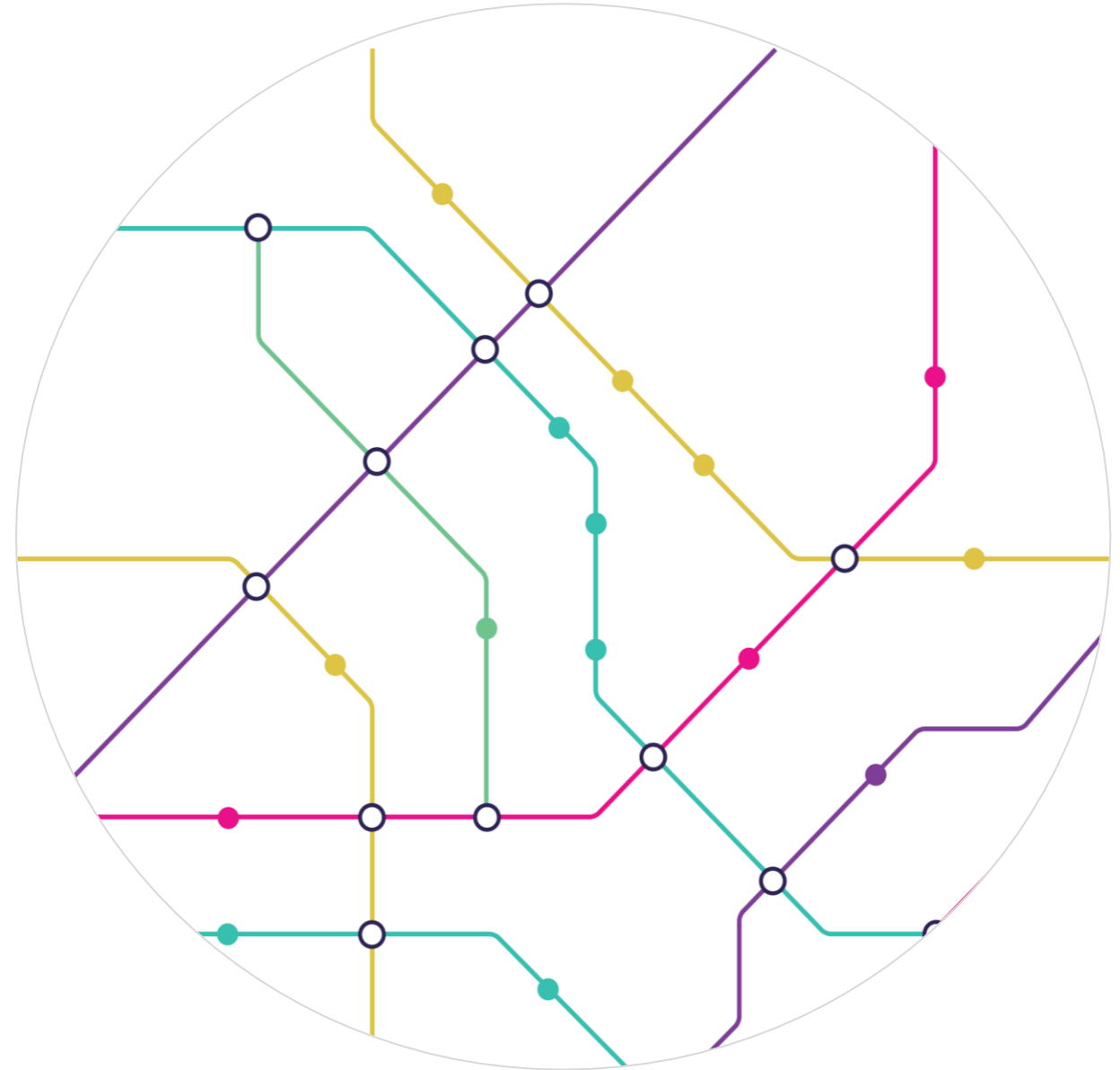
Your route to better transport management



www.epm-bus.com



www.omnibus.solutions



Contents

Introduction to EPM Group	3
Solutions:	
Depot Performance Systems (DPS)	5
ETM DAS:	7
Contract Management	8
ETM Analysis	9
Multi-operator Ticketing	10
Concessionary Analysis	11
Insights	12
Scheduling suite:	16
Timetables (OmniTIMES)	18
Mapping (OmniMAP)	19
Scheduling (OmniBASE)	20
Rostering (OmniROTA)	21
Crew Duties (CrewPLAN)	22
Depot allocation (OmniDAS)	23
Timetable publicity (OmniSTOPdesign)	27
Asset management (OmniFLAG)	31
Data sharing	33
TransXchange (TXC tools)	34
Electronic Bus Service Registrations (EBSR)	35
Bus Open Data Service (BODS)	36
Contact details	37



Introduction to EPM Group

Quality and efficiency of passenger transport services are the driving forces behind our software and consultancy solutions. To stay-ahead in this fast changing environment, transport authorities need access to tools and services that enable them to respond quickly and effectively.

Omnibus solutions

Driving efficiency for passenger transport operators is the key goal behind our software solutions and over the past 30 years we have become a market-leader in the field. Our solutions utilise leading technology to address the needs of passenger transport operators to create efficient schedules, timetables and staff rosters. These feed through to vehicle and crew allocation systems that ensure timetables are delivered punctually and cost effectively.

EPM Bus solutions

Consultants and auditors with over 30 years experience in bus operations, we have witnessed the power of data first-hand, of unlocking insights that support and empower network optimisation, future decision making, and patronage growth. We have embedded our know-how into a unique range of software and consultancy services supporting transport authorities to reduce costs, track performance and better serve your local communities.

We have the tools and expertise you need to grow patronage, maximise revenue, improve efficiency and deliver outstanding customer service.

Powerful software solutions improving efficiency



Optimise across the board

Fully integrated system to streamline processes with ease

Improve service quality

Maximise performance and planning of new and existing services

Ensure seamless transition

Generate service specifications as part of the tendering process

Secure network success

Monitor and evaluate operator compliance and performance

Make payments painless

Assure operators their payments are complete and accurate

Make data-driven decisions

Unlock actionable insights from your data to drive network optimisation



Depot Performance System

Software solution | DPS

Empowering you with new levels of control and visibility

DPS is an operations management system which is used to efficiently manage the network, customer services, drivers, and accidents records, as well as providing commercial analysis.

Capture and analyse details of every passenger transaction across the full bus operation including on bus revenue and off bus sales data and monitor patronage across different routes to assess demand against capacity plans.

The solution also provides a framework for assessing route viability and performance of the network over a specified period of time.



Depot Performance System

Reduce costs and improve financial and operational performance

The Depot Performance System (DPS) is used commercially by the big five plc's in the UK Bus Industry as well as some of the smaller plc's and several large independent bus operators as the source of their ETM and route performance analysis. This powerful system encompasses the following modules:



Electronic Ticket Machine Analysis (ETM)

Capture and analyse details of every passenger transaction across the full bus operation.



Concessionary Analysis

Calculate concessionary fares reimbursement utilising ETM data for concessionary passenger transactions.



Traffic System

Record on the road incidents, including lost mileage, to manage the operation and assess operational performance. The system also generates operator BSOG actual and estimate reports.



Depot Revenue Reconciliation System (DRRS)

Seamlessly control on bus cash takings with a revenue reconciliation system.



Contract Performance

Manage and report on contracted revenue and ensure compliance.



Operational Performance Module

Effectively manage customer services, drivers, and accidents records.



Vehicle: Fuel & Miles System

Control fuel from purchase through to issue. Generate fuel consumption and vehicle mileage data for BSOG claims and tyre mileage returns.



Route Performance System

Get visibility of network performance to assess route viability and performance over a specified period of time.

ETM DAS

Software solution

Your route to better transport management

Enjoy new levels of control and visibility over the bus networks that service your communities.

Ensure tendered routes are delivered in line with contracts and demonstrate good stewardship of public funds, whilst reducing the time spent administering and monitoring operator performance.

It's the wheel-turning, 360° view you need to ensure your networks are running effectively.



CONTRACT MANAGEMENT

Monitor the performance of your contracted services on one single platform

Manage the performance of tendered routes to ensure the effective performance of your contracted network. Developed for Local Transport Authorities, our solution provides an easy way to monitor the performance of all your contracted services in one place – reducing your administration time and providing data to make cost effective decisions.



EPM's experience and knowledge in delivering their contract management software to a wide range of customers meant they fully understood our requirements and ensured a seamless transition from our previous systems with no impact on data flows between bus operators and ourselves. The feedback from our bus operators has been overwhelmingly positive as the EPM software has greatly improved data quality whilst also making the process of submitting data much more efficient.



Paul Clark
Bus Contracts Officer at MerseyTravel



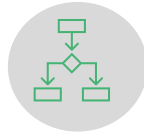
Central repository for contracts

Access to a central record of all contracted services down to individual trip in one location with their associated history.



Accuracy

Ensure operators are not over paid and demonstrate good stewardship of public funds.



Decision making

Use data from all aspects of contract performance to inform decision making and drive improvements.



Compliance

Monitor all tenders to ensure that they are operated in line with your contracts.



Invoice automation

Streamline the administrative process with automated invoice generation for non-compliance penalties



Insights

Integration with our Insights platform to provide advanced analytics.

Contract Management

ETM Analysis

Multi-operator ticketing

Concessionary analysis

ETM ANALYSIS

Optimise your contracted network

Our powerful solution enables Transport Authorities to optimise the contracted network with a clear view of patronage and revenue performance across routes, days, trips and times.

Capture and analyse details of every passenger transaction across the contracted network, from ticket type purchased, to total passenger numbers, and use the data to make cost-effective decisions.

“

EPM's ETM Data Analysis Software enables Transport for West Midlands (part of the West Midlands Combined Authority) to maintain a comprehensive record of subsidised bus contracts, and efficiently manage contract content and renewal. The solution allows TfWM to monitor patronage and analyse the performance of the subsidised bus network, and the reporting functionality is used to measure contract compliance against KPIs, and provides the information needed to ensure the viability of subsidised bus services and meet the needs of our passengers.

”

Bus Services Team

Transport for West Midlands
(part of the West Midlands Combined Authority)



Data consolidation

A central hub of operators' ticket transaction data gathered from different ticket machines and presented in a common format.



Value for money

Transaction level data enables you to understand patronage trends on supported services to compare against contract costs and generate cost per passenger metrics.



Generate KPI reports

The reports engine function enables reporting against defined KPIs to provide analysis of performance across a range of critical business measures.



Track patronage across contracted routes

Monitor patronage levels of contracted routes across different routes, days, trips and times.



Investigate customer queries

Use the data to investigate customer complaints and incidents, and identify patterns with routes.



Insights

Integration with our Insights platform to provide advanced analytics.

MULTI-OPERATOR TICKETING

Reducing administration of your scheme

Efficiently manage your multi-operator ticketing scheme and get complete visibility of sales and usage data. Our solution streamlines the process for operators and scheme administrators, reducing administration time and ensuring accuracy.



Digitise

Streamline the administrative process with digital returns instead of manual entry of data.



Time saving

Automate processes to improve efficiency for both operators and scheme administrators.



Commercial analysis

Transaction level data enables you to understand patronage trends.



Accuracy

Ensure operators are receiving the correct amount of reimbursement



Actual data

Obtain transactional data for all multi-operator ticket sales, removing the requirement for survey data which improves accuracy and reduces costs.



Insights

Integration with our Insights platform provides advanced analytics and insight into the sales and usage data to identify anomalies for further investigation.

CONCESSIONARY ANALYSIS

New levels of control and visibility over the bus networks servicing your communities

Utilising ETM data, our powerful software solution seamlessly calculates concessionary fare reimbursement for concessionary passenger transactions.

Get complete visibility of your concessionary fare data and ensure reimbursement claims are accurate.



Accuracy

Ensure operators are receiving the correct concessionary travel reimbursement.



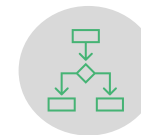
Time saving

Automate processes to improve efficiency for both operators and scheme administrators.



Analysis

Transaction level data enables you to understand patronage trends.



Digitise

Streamline the administrative process with digital returns instead of manual entry of data.



Actual data

Obtain transactional data for concessionary transactions, removing the requirement for survey data which improves accuracy and reduces costs..



Insights

Integration with our Insights platform provides advanced analytics and insight into concessionary patronage data to identify anomalies for further investigation.

INSIGHTS

Software solution

Data driven decision making for transport authorities

Actionable intelligence supporting you to improve network service, patronage and efficiency. **Insights** delivers unparalleled visibility of your bus operations through real-time **management information** and **interactive dashboards**.

Explore key areas of your organisation like never before, from commercial to operations, with advanced software systems which consolidate data from across the organisation into one single source of truth.



View all your operations in one, simple platform – your route to improving service, patronage and operational efficiency

Interactive analysis

Drill down capability allows users to undertake intuitive interrogation of the data, investigating root causes of any issues identified.

360 degree view

Fully integrated data from multiple sources ensures one version of the truth, delivering a 360 degree view of the business.

Strategic insight

Gain insights across all aspects of the business, then drill down through the detail to drive improvements across your organisation.

Data consolidation

Automatically consolidate data across multiple sources across your business operations.

Visual dashboards

Present the data in a range of dashboards, tailored specifically to each user.

Configurable reporting

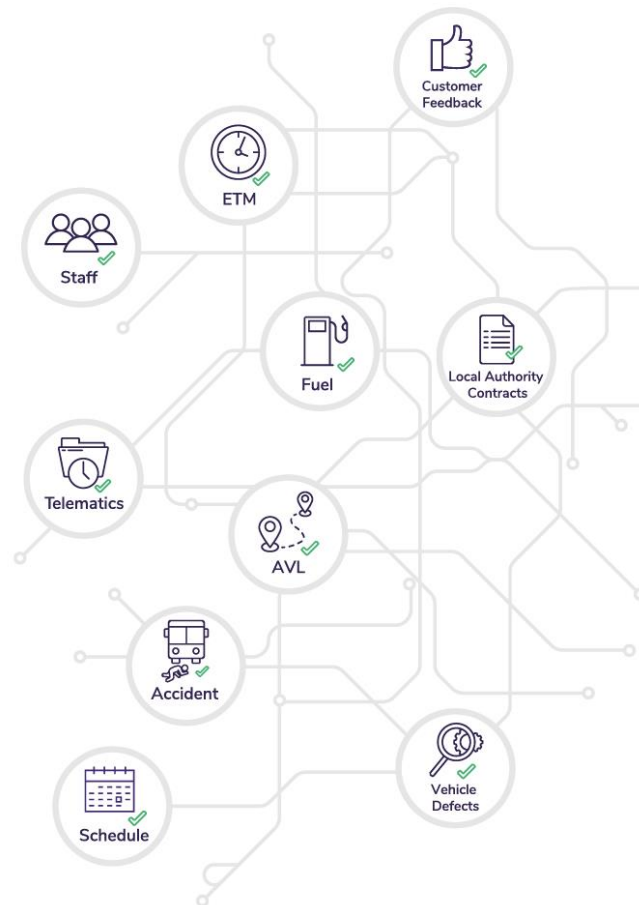
Includes a library of template dashboards that can be edited by the user, along with the capability to create completely new dashboards as required.



Interactive reporting to explore root causes

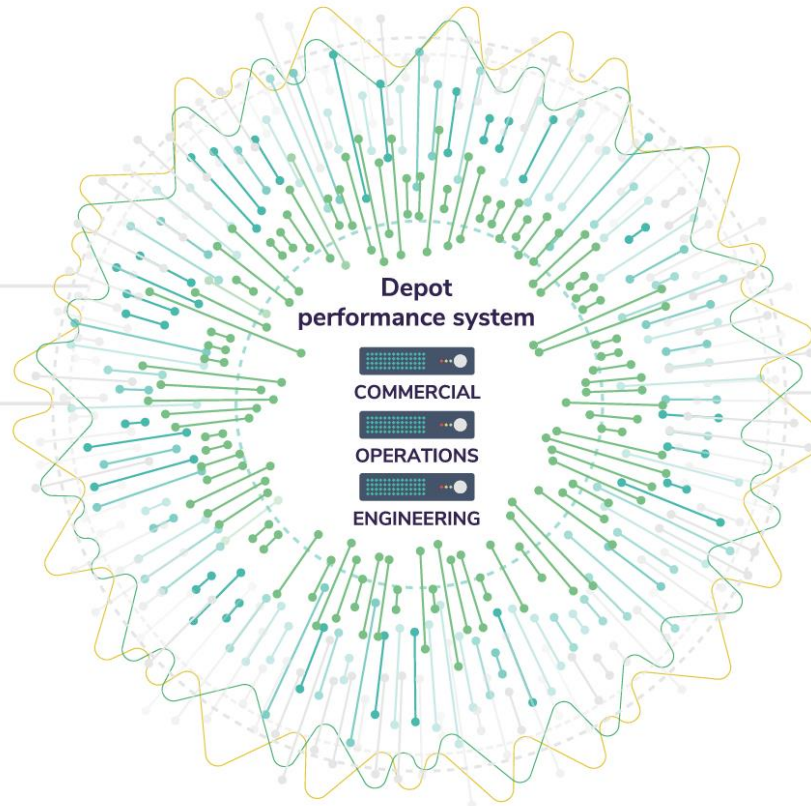
DATA AGGREGATION

Data securely collected from a range of sources and activities across your bus operation.



CONSOLIDATION AND CORRECTION

Identification of anomalies and omissions in the information corrected and standardised. Data collection automated and seamless with no manual intervention required.



MANAGEMENT INSIGHT

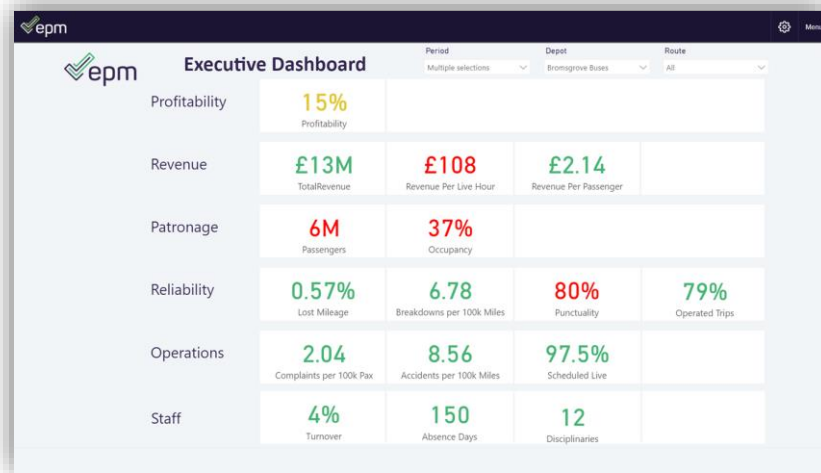
Actionable intelligence to make data driven decisions. **Insights** delivers unparalleled visibility of your bus operations through real-time **management information** and **interactive dashboards**.

Interactive. Dynamic. Seamless.



Dynamic reporting with drill down functionality to quickly explore the detailed reasons and causes behind the KPIs

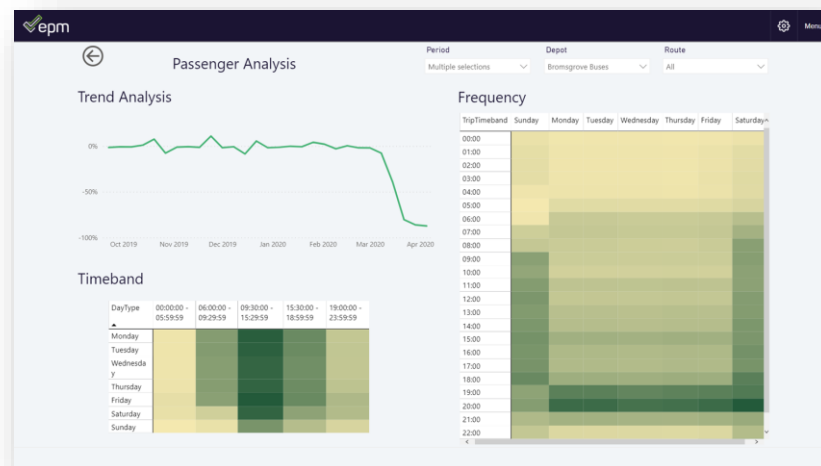
Performance reports available on-demand



The executive perspective

Fully integrated data from multiple sources ensures one version of the truth - delivering a 360 degree view of the organisation.

Gain insight across all aspects of the operation, then drill down through the detail to drive improvements across your organisation.



Track patronage and occupancy

Analyse patronage trends to see which time of day routes are most popular.

Visual dashboards produce a heat-map display to indicate which routes are used the most and least.

SCHEDULING SUITE

Software solutions

Your route to better transport management

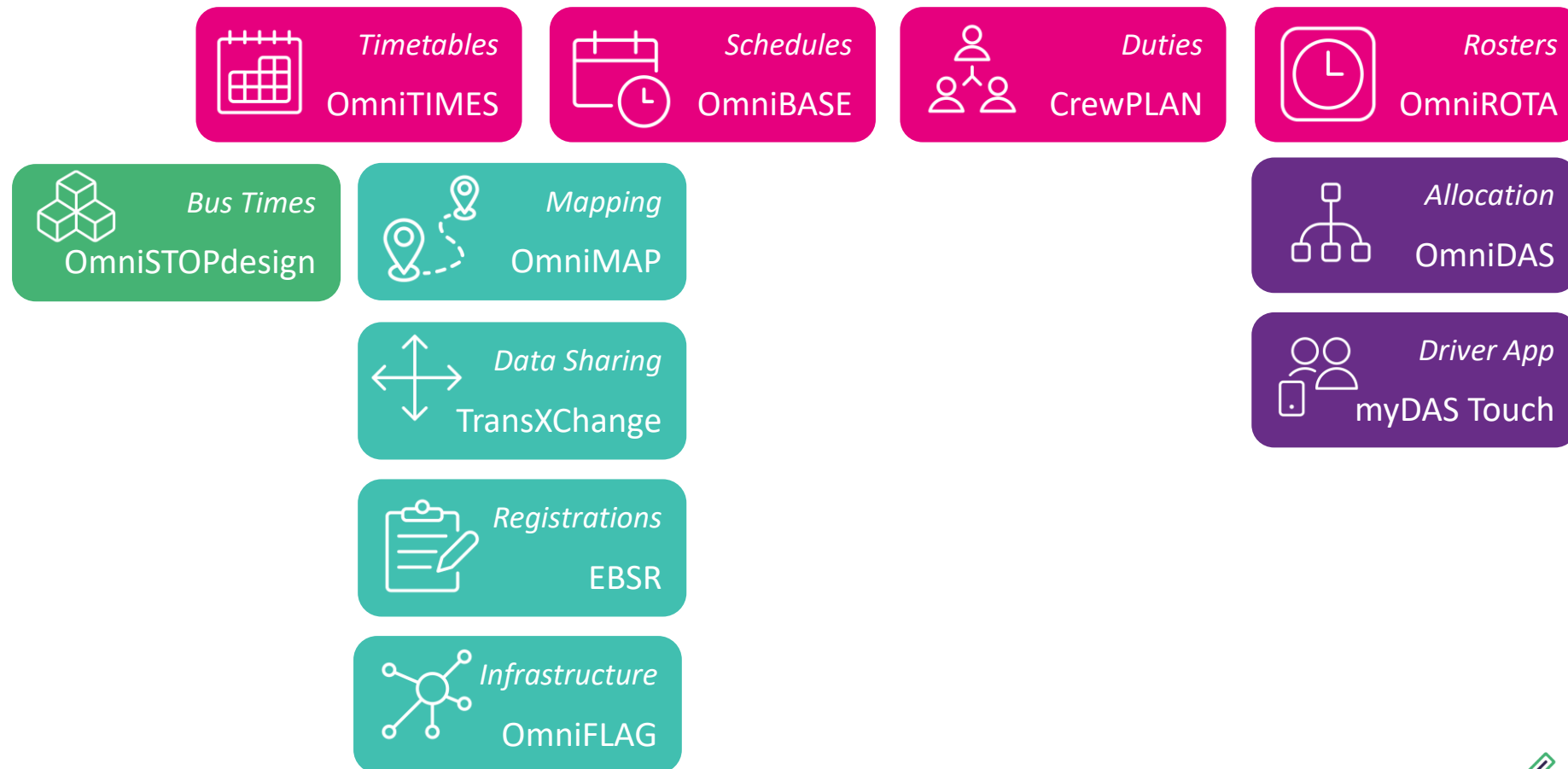
Enjoy new levels of efficiency with your passenger transport timetables and schedules using our market leading software and consultancy solutions. To stay-ahead in this fast-changing environment you need access to tools and services that enable you to respond quickly and effectively.

Our solutions utilise leading technology to enable passenger transport authorities to develop optimum timetables and schedules. These feed through to timetable publicity and data sharing tools that give passengers access to accurate information and ensure you comply with regulations.



Our range of software solutions for passenger transport

Timetabling, mapping, scheduling, staff rostering, crew duties, depot allocation, publicity materials, asset management and data sharing



OmniTIMES *Timetables*

OmniMAP *Mapping*

OmniBASE *Schedules*

CrewPLAN *Duties*

OmniROTA *Rosters*

TIMETABLING

Compile timetables quickly and efficiently for all types of passenger transport.

When building complex timetables, schedulers need to feel that decisions and structures made for them are both reliable and consistent. With a reputation for being powerful, yet easy to use and intuitive, OmniTIMES is used worldwide by organisations to compile timetables of all types – bus, rail, tram and ferry.



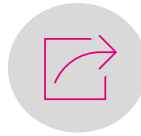
Timetables created fast

Quickly produces clear and accurate timetables



Intuitive interface

Easy to maintain and update timetables with quick editing functionality saving valuable time



Data sharing across applications

Automatically share data platforms to improve efficiency in business operations



Model different scenarios

Trips may be altered and retimed instantly, enabling you to experiment with service ideas without wasting valuable time



Complex timetables

Easy development of complex timetables, with differential running times, in a matter of seconds



Configurable to requirements

Timetables can include as much information as required, either 12 or 24 hour clock, and with a choice of styles to suit which can be edited by the user

OmniTIMES *Timetables*

OmniMAP *Mapping*

OmniBASE *Schedules*

CrewPLAN *Duties*

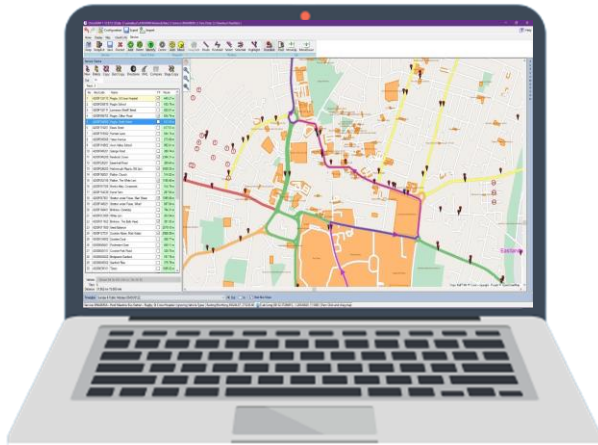
OmniROTA *Rosters*

MAPPING

Digital mapping for bus networks

Digital maps are a commonplace tool for both individuals and businesses, from basic online route planning to tracking vehicles around the country. However, these products have mainly been designed around car accessibility and are not that useful for the different characteristics of a bus network.

Our OmniMAP solution is developed specifically for bus operators and transport authorities managing a bus network. It is extremely user-friendly and a versatile tool for planning, displaying and editing bus services and stop networks.



Create bus routes easily

Simplifies the creation of new routes taking into account bus specific road network (eg bus lanes)



Route optimisation

Helps optimise routes and services by automatically route between points, allowing for restrictions



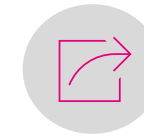
Visualise the routes

Achieve a visual perspective of routes and bus stop network



Intuitive interface

Easy to use platform with quick editing functionality saving valuable time



Data sharing across applications

Share data across platforms, OmniTIMES, to improve efficiency in business operations



Reduces work-hours spent visualising

Routes are efficient and accurate reducing the time needed for reworking

OmniTIMES *Timetables*

OmniMAP *Mapping*

OmniBASE *Schedules*

CrewPLAN *Duties*

OmniROTA *Rosters*

SCHEDULING

Produce efficient and accurate vehicle schedules

Produces accurate and efficient vehicle workings in a fraction of the time taken when produced manually. Linking with our timetabling, crewing and rostering applications you can conceive, plan and schedule complete operations, as well as monitor the efficiency of existing schedules and experiment with range, route, crew and time changes.



Cost efficient schedules

Quickly produces cost-effective schedules for all vehicle fuel types



Reduces work-hours spent modelling services

Schedules are efficient and accurate reducing the time needed for modelling scenarios



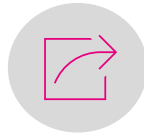
Intuitive interface

Easy to maintain and update timetables with quick editing functionality saving valuable time



Accurate

Eliminates unnecessary errors



Data sharing across applications

Automatically share data platforms to improve efficiency in business operations



On-demand reporting

Accurate statistical reports produced instantly

OmniTIMES *Timetables*

OmniMAP *Mapping*

OmniBASE *Schedules*

CrewPLAN *Duties*

OmniROTA *Rosters*

CREW DUTIES

Quickly produce robust and efficient compliant driver duties

Our leading automatic crew scheduling system can **quickly** and **efficiently** produce a set of drivers' duties, taking into account a wide range of user-controlled parameters and covering many variations in the labour agreement rules. With features to control elements such as route content within duties, and minimising undesirable duty types, it allows the creation of efficient schedules that are also practical in operation.



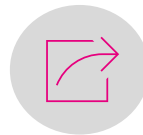
Optimised crew duties

Robust, workable crew duties turnaround with speed minimising the need for adjustments



Productivity increased

Saves valuable resource time in planning, improving productivity



Data sharing across applications

Automatically share data platforms to improve efficiency in business operations



Scenarios modelling

Easy to run 'what if' scenarios and see the results of changes instantly



Maximise operational management

Links with our timetabling and rostering applications providing a powerful management tool



Law and labour rules compliance

Meet local labour rules and laws with ease, flexible system to incorporate rules

OmniTIMES *Timetables*

OmniMAP *Mapping*

OmniBASE *Schedules*

CrewPLAN *Duties*

OmniROTA *Rosters*

ROTA COMPILATION

Produce efficient and accurate rotas for bus and crew schedules

Using bus and crew schedules created in the schedules platform, OmniBASE, OmniROTA produces accurate and efficient rotas in a fraction of the time taken when produced manually.

By using OmniROTA, you can create multiple rotas, with full onscreen editing and full checking to produce balanced rotas to desired parameters. Typical checks include double cover, minimum break periods and duties without cover.



Cost efficient rotas

Easy to produce cost effective rotas accurately and quickly



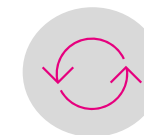
Efficient duties

Cost saved through more efficient use of duties



Complex rotas

Save time working through complex rotas



Updates easily managed

Amendments calculated quickly without the need to create new rotas



Data sharing across applications

Automatically share data platforms to improve efficiency in business operations



Easy-to-use intuitive platform

Full onscreen editing and full checking to produce balanced rotas to desired parameters

DEPOT ALLOCATION

Software solution | OmniDAS

Depot allocation and control providing
real-time driver and vehicle management

Unexpected events such as driver sickness or road incidents can impact scheduled services. Allocation of drivers on the day can be complex, time-consuming and increase operational costs if not managed correctly.

OmniDAS is the complete Depot Allocation System, a cloud solution for you to **deliver services safely and legally whilst minimising costs** and providing real-time driver and vehicle management control. Whilst timesheet and payroll integration, automated staff sign-on and seamless data capture reduces administration.



Complete visibility of available resources to make optimal operational decisions quickly

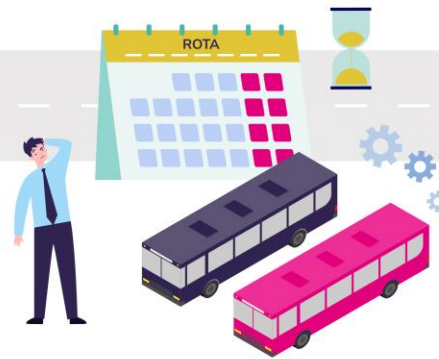
1. RESOURCE VISIBILITY

Complete visibility of drivers and vehicles across all depots



2. FORWARD ALLOCATION

Safe and legal allocation that optimises use of valuable resources



3. DRIVER COORDINATION

Empower and motivate drivers through improved communication



4. AUTOMATED SIGN-ON

Reduce workload for pressured operations team



7. SERVICE IMPROVEMENT

Performance reporting and analysis to drive improvement



6. SEAMLESS DATA CAPTURE

Single source of truth with data flows to HR, payroll and operations



5. CONTROL ON THE DAY

Informed real-time decision making that maintains service quality



Deliver services safely and legally whilst minimising costs



RESOURCE VISIBILITY

Complete visibility of drivers and vehicles across all depots

- Comprehensive driver records including route and vehicle knowledge, pay rates, driving hours, training, DBS checks, licence expiry dates and equipment.
- Flexibility to accommodate local pay rules and labour agreements within duty plans and allocation process.
- Vehicle fleet availability including locations, specifications, branding and parking arrangements.
- Replicate your depot or yard set-up to safely optimise service roll-out and allocation.

FORWARD ALLOCATION

Safe and legal allocation that optimises use of valuable resources

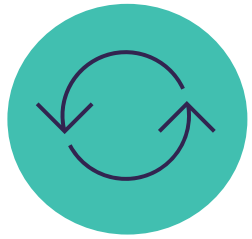
- Automated process provides most efficient match of drivers to duties and vehicles, saving time and cost.
- Allocation process takes account of regulations, employment law, licensing, training and route knowledge to ensure safety and legal compliance.
- Fair and consistent allocation method accommodates the needs and preferences of individual drivers.
- See a full picture of driver and vehicle allocations to help quickly resolve allocation issues.

DRIVER COORDINATION

Empower and motivate drivers through improved communication

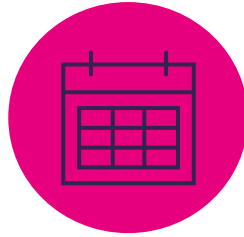
- Driver App provides quick and easy access to rotas and duties, along with notification of any changes to plans.
- Drivers can request holidays or duty changes, arrange shift swaps or volunteer for overtime via the Driver App.
- Better communication and involvement in work allocation improves driver morale and retention.
- Admin burden is reduced due to automation of driver requests and enquiries.

Seamless data capture reducing administration



AUTOMATE SIGN-ON

- Reduce workload for pressured operations team.
- Drivers clock-in electronically.
- Controllers alerted to late or absent drivers.
- Real-time attendance monitoring and recording.



CONTROL ON THE DAY

Informed real-time decision making that maintains service quality

- Operational issues captured as they happen such as driver absence, congestion, accidents and complaints.
- Clear visibility of all duties that need covering along with eligible drivers and available vehicles, enabling resolution of issues 'on the spot'.
- Assess the impact of re-allocation choices on driver pay, paid hours and overtime to maximise productivity and reduce costs.



SEAMLESS DATA CAPTURE

Single source of truth with data flows to HR, payroll and operations.

- Trap vital data at source whilst managing daily operations to remove the need for rekeying.
- Interface with payroll systems to provide accurate payment data based on actual hours worked, overtime and correct duty rates.
- Interoperability between operations and HR systems to manage attendance, punctuality, disciplinary processes, licensing and training needs.



SERVICE IMPROVEMENT

Performance reporting and analysis to drive improvement.

- Complete transparency over operations at any time and from anywhere.
- Explore where actual delivery costs are greater than the plan and analyse underlying reasons to identify root causes of inefficiency.
- Get a full picture of utilisation for all drivers to identify non-productive activity.
- Management reports available to measure performance against KPIs. Drill down into issues and develop improvement plans.

TIMETABLE PUBLICITY

Software solution | OmniSTOPdesign

Publishing software for stop displays
produced quickly and cost-effectively

OmniSTOPdesign is a sophisticated application which enables operators and local authorities to create attractive and accurate public transport stop or station information displays.

The solution brings together the flexibility of desk-top publishing and the data integrity of OmniTIMES through the automatic inclusion of accurate timetable information, direct from your timetabling data. This ensures complete accuracy, with design and formatting fine-tuned to your exact requirements.



Streamline the production of timetable displays

The key to this revolutionary new way of working is our user configurable template system, designed to offer users complete control over their displays. Automatic schematic maps can be added to any display with ease and services can be included, omitted or merged at stop level giving you complete flexibility to deliver passenger information in the most appropriate format.

Using the built-in stop database which can store the details of information cases provided at stops, templates can quickly be assigned to appropriate stops. A variety of timetable display formats are available, including summary frequency patterns and timebands. If desired, each stop can utilise a bespoke design which is particularly beneficial for networks that include a variety of stop usage levels and different case types. Route branding can be used to full extent throughout a display and adverts and graphics can easily be included – ensuring that stop information forms an integral part of your marketing strategy.

Output is simplified with users able to batch create PDFs for certain stops or select those served by a particular service – and paper sizes can be collated automatically to streamline the production process.



OmniSTOPdesign offers us new possibilities in timetable publicity that can take things to a whole new level. We will be able to manage roadside and online publicity information for local bus services, from improving roadside/in-street route and timetable information, including the use of digital displays, to integrating bus services and timetables in order to maximise scope for multi-modal connections."



Derek Riley

Passenger Transport Officer at
Warwickshire County Council

Publicity material produced quickly and cost-effectively

Marketing displays

Optimises making displays an integral part of your marketing communications strategy

Cost and time efficient

Saves time and money through increased efficiency in the production process

Accurate

Information is accurate and connected to your scheduling database

Customisable

Complete design flexibility tailored to your requirements and brand

Data sharing seamless

Automatically share data platforms to improve efficiency in business operations


Intuitive interface

Easy to maintain and update with quick editing functionality saving valuable time


Flexible templates to meet your brand requirements

T14 to Brecon via Dorstone - Hardwicke - Hay-on-Wye - Glasbury - Gwernyfed - Talgarth					
Monday to Saturday Effective from 04/10/2021					
Col					
Peterchurch, Crossways	0848	1233	1438	1716	1848
Peterchurch, Nags Head	0849	1234	1439	1717	1849
Dorstone, Post Office	0856	1241	1446	1724	1856
Hardwicke Turn	0904	1249	1454	1732	1904
Hay-on-Wye, Castle	0909	1254	1459	1737	1909
Glasbury, Bridge	0919	1304	1509	1745	1919
Gwernyfed, Three Cocks	0922	1307	1512	1748	1922
Talgarth, Natwest	0929	1314	1519	1755	1929
Bronllys, The Ridgeway	0933	1318	1523	1759	1933
Felinfach, Griffin Inn	0941	1326	1531	1807	1941
Brecon, Bishop's Meadow	0945	1330	1535	1811	1945
Brecon, High School	0948	1333	1538	1814	1948
Brecon, Interchange	0952	1337	1542	1818	1952

Sunday & Public Holidays
No Service from this stop
 Notes
 Col = College days only;





Free bus travel at the weekends
What's on your BUS-IT list?




X3 to Cardiff via Allensmore - Wormbridge - Pontrilas - Abergavenny - Pontypool - Cwmbran					
Mondays to Saturdays Effective from 04/01/2022					
0626	447 (S)	0830	449 (Sch (2))	1105	449
0638	440 (Sch)	0833	X3	1113	75
0658	440 (Sch)	0905	449 (Sch)	1205	449 (Sch)
0701	440 (Sch (2))	0913	75	1210	T14
0734	442 (Sch (3))	1005	449 (Sch)	1213	75
0740	809 (Sch)	1013	75	1233	X3
0825	T14	1033	X3	1305	449
1028	S9A	1328	S9A	1628	S9A

Sundays and Public Holidays
 Notes
 (1) = Terminates at Cwmbran, Bus Station; (2) = Terminates at Kingstone, High School; (3) = Terminates at Madley, Archenfield; Sch = School days only;
 (Sch) = School Holidays; TH = Tuesdays and Thursdays Only; W = Wednesdays Only; MWTF = Mondays, Wednesdays and Fridays Only; Col = College days only;

For the next departure times from this stop
 Text **heragmwj** to 84268. Your text will cost your usual tariff.

For further information about public transport in Herefordshire
 Timetables and journey planning
 For services in Herefordshire and throughout Britain: 0871 200 22 33
www.traveline.info
 Bus times on the move
 Text the bus stop code to 84268
www.nextbuses.mobi
 for smartphones
 follow us for the latest info:
 Public Transport information
www.herefordbus.info
 twitter.com/HfBusBuses

Tesco Store, A465 Belmont Road opp Library/Medical Centre page: 1 Stop Ref: 2090A18323



Bus Information

Peterchurch, Crossways


Buses to Hereford, from this side of the road:

39 to Hereford
 via Vowchurch - Kingstone - Clehonger - Belmont
Monday to Friday
 Effective from 01/01/2020

Peterchurch, Crossways	Sch	0931
Vowchurch Turn		0934
Kingstone, Post Office		0939
Clehonger, Main Road		0944
Belmont, Tesco Store		0950
Hereford, Bridge Street		0959
Hereford, Country Bus Station		1003

Saturday, Sunday & Public Holidays
No Service from this stop
 Notes
 Sch = School days Only;

39A to Hereford Station
 via Madley - Great Brampton - Kingstone - Clehonger - Belmont - Hereford
Monday to Saturday
No Service from this stop



Bus Information

Belmont, Tesco Store

39 to Peterchurch
 via Clehonger - Kingstone - Vowchurch
 YEOMANS TRAVEL

39A to Hay-on-Wye
 via Clehonger - Kingstone - Great Brampton - Madley - Peterchurch - Dorstone
 YEOMANS TRAVEL

75 to Hereford
 via Hunderton
 heragmwj

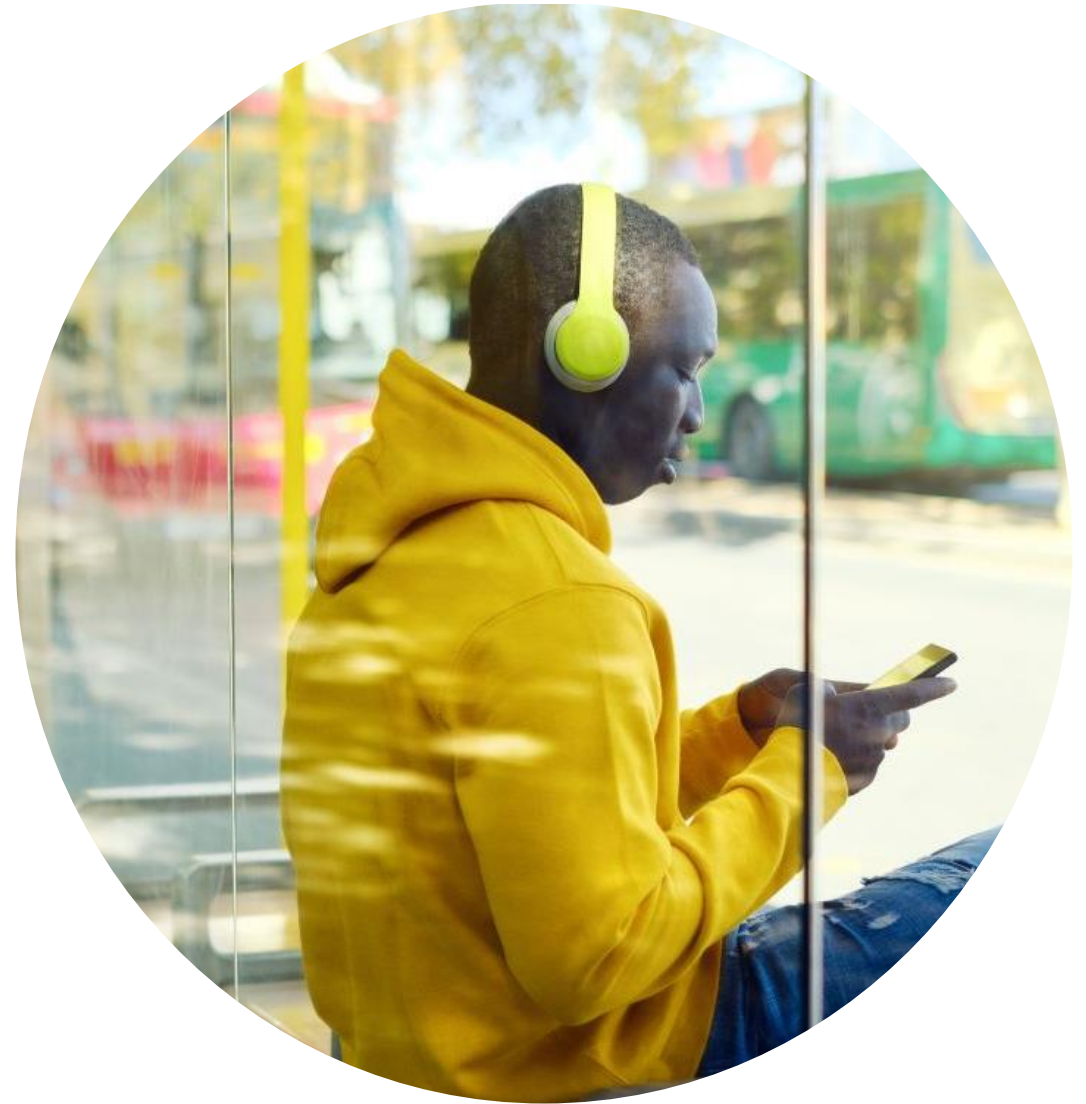
413 to Broad Oak
 via Allensmore - Kilpeck - Much Dewchurch - Wermelaw - Orrop Hill
 YEOMANS TRAVEL

ASSET MANAGEMENT

Software solution | OmniFLAG

NaPTAN editor and roadside asset management

NaPTAN (the National Public Transport Access Node database) uniquely identifies points of access to public transport. It is an essential resource for local authorities and operators, providing a single source of bus stop information for use in timetables, publicity and journey planning. However, local authorities and operators find that the data can sometimes be inaccurate or require updating, which is where OmniFLAG is invaluable.



Powerful validation on NaPTAN data as you edit

OmniFLAG allows you to maintain StopPoint and StopArea records for your area. Built to support all the features of the NaPTAN version 2 XML schema, the editor is easy to use and validates changes as you edit.

For those moving from managing bus stop data using spreadsheets, NaPTAN version 2 data can be much more complicated than using a single table. OmniFLAG provides a specialist editor and imports and exports data in XML format. The facility to perform a fast bulk import of your existing NaPTAN and NPTG (National Public Transport Gazetteer) data will get you up and running quickly.

System data integrity

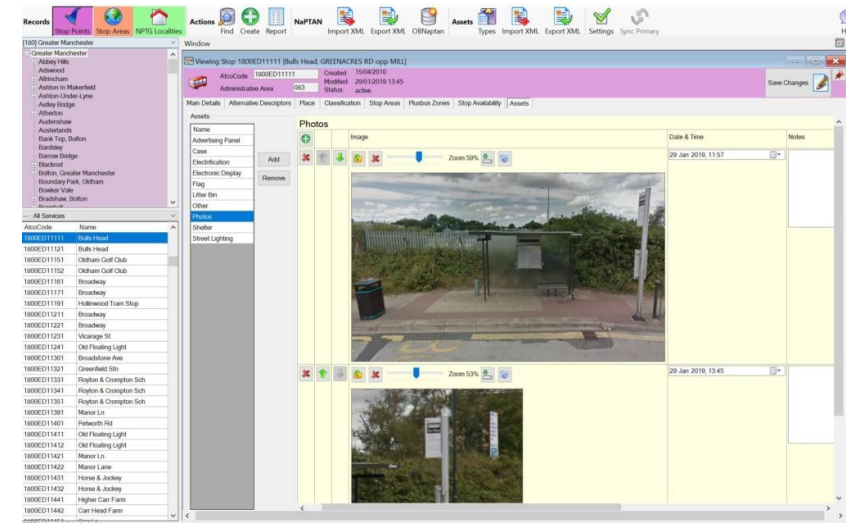
OmniFLAG can be installed on Windows tablets & laptops to allow remote data collection and editing including taking GPS readings and photographs from within the application. Automatic database synchronisation between devices and your system ensures data integrity.

Details of asset information can easily be extracted from OmniFLAG to assist with asset maintenance and information management.

Asset management for roadside equipment

OmniFLAG also provides a comprehensive asset management solution for recording and monitoring bus stops and associated equipment.

It can store a wide range of information, typically relating to: flags, display cases, poles, electronic displays, kerb information, shelters, usage, routes and photographs. Detailed information can be added to these records, including maintenance notes, ownership and the manufacturer of equipment. Asset management record formats are user configurable. Users can create new asset types, structures and data lists.



DATA SHARING

Software solutions

Your route to better transport management

EBSR (Electronic Bus Service Registrations) provides the information required for a registration with VOSA, including the timetable element, in a TransXChange XML format file. The route must be sufficiently detailed to enable it to be electronically mapped and details of the registration (with service and operator information) need to be included.

EBSR solution

As a part of our TransXChange software, the EBSR module is designed to provide an efficient answer to the provision of Electronic Bus Service Registrations. Once a user has input details of the operator, service and registration, the module will extract all registration journeys from OmniTIMES data and mapping details from OmniMAP to create TransXChange format registration documents ready to be sent to VOSA.



TRANSXCHANGE

Data exchange and seamless integration

TransXChange is the UK standard for exchanging public transport timetable and schedule data. It can be used both for Electronic Bus Service Registrations (EBSR) and for the exchange of operational data with systems such as journey planners (including those operated by Traveline), real-time (RTPI) systems and electronic ticket machine systems (ETMs).

SOLUTIONS

Our TransXChange modules are developed to support reading and writing the latest DfT TXC standard, making the process as painless as possible. They are: TXC Importer – Imports journeys from a collection of TransXChange files into an OmniTIMES timetable database, preserving as high a level of detail as the source data allows, with options to control how multiple TransXChange journeys are to be split into separate timetables.

TXC Exporter – Converts OmniBASE schedules information combined with OmniTIMES timetable trips into TransXChange format. It reduces the size of exported data by identifying journey patterns that can be referenced by multiple journeys. The exporter performs validation checks on the source data to help to pinpoint any data issues prior to producing a TransXChange file.

TXC Viewer – Allows users to open and view TransXChange files onscreen. Users can drill down to inspect the full range of data including details of Services, Stop Points, Operators and Registrations and can export route definitions as geographic tracks for display in popular mapping applications.

TXC Importer – Parties receiving data in TransXChange format can easily import data into OmniTIMES and OmniMAP. Users are then able to edit update and work with timetables as normal or make use of the data in one of our other module such as OmniSTOPdesign for bus stop displays.

Let us do the hard work to make your timetables TransXChange ready with the our modules.



ADOPT INDUSTRY STANDARD

Be prepared for the wider use of TransXChange



SIMPLIFIED INTEGRATION

Share data with multiple applications without multiple interfaces



STAY AHEAD

Stay at the forefront of data integration across the passenger transport industry

ELECTRONIC BUS SERVICE REGISTRATIONS

Simplifying the registration process

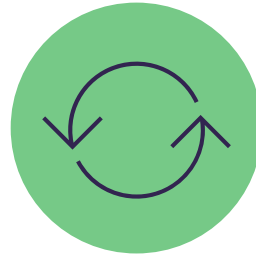
EBSR (Electronic Bus Service Registrations) provides the information required for a registration with VOSA, including the timetable element, in a TransXChange XML format file. The route must be sufficiently detailed to enable it to be electronically mapped and details of the registration (with service and operator information) need to be included.

As a part of our TransXChange software, the EBSR module is designed to provide an efficient answer to the provision of Electronic Bus Service Registrations. Once a user has input details of the operator, service and registration, the module will extract all registration journeys from OmniTIMES data and mapping details from OmniMAP to create TransXChange format registration documents ready to be sent to VOSA.



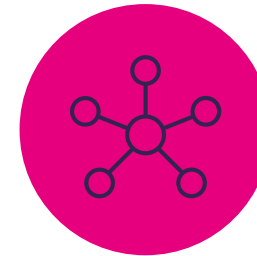
BUILT-IN VALIDATION PROCESS

In addition, the module validates against the Registration Schema and won't allow the file to be Saved (and therefore submitted) if it fails validation. To help organisations keep a track of service changes electronically, a stored history of previous registrations is held centrally, and can be recalled easily.



SEAMLESS DATA INTEGRATION

EBSR has a significant impact for local authorities who already use our timetabling platform (OmniTIMES). The time consuming business of interpreting and manually inputting registrations will disappear at a stroke. Using the timetable data currently held for Traveline the modification or creation of timetables for the EBSR process is simple, streamlining this function.



SEAMLESS WITH SCHEDULING PLATFORM

For operators, the move to EBSR, with data fed directly from the scheduling system, will remove the need for the paperwork associated with changes in registrations. This speeds up the process significantly and will ensure the accurate interpretation of registrations by those who receive and use them.

BUS OPEN DATA SERVICE

DfT compliant timetable and schedule data

The Bus Open Data Service (BODS) is a scheme led by the Department for Transport (DfT) that requires all bus operators in England to publish timetables, fares and live vehicle tracking in an open data format that can be read by other downstream users.

The intention is to provide more data to transport users, ultimately improving accessibility for both new and potential customers.

SOLUTION

Our solution can be used to meet the requirement to provide timetable and schedules information. BODS requires operators to supply TransXChange files compiled in a specific way. As such we have built a separate export tool within our standard TransXChange Exporter that will produce an output to meet the latest PTI Profile standard.

BODS SPECIFIC SOLUTION

The BODS profile sits within the latest TXC schema – that means the BODS file is laid out and set up in the same way as a normal TXC file BUT some of the data fields that are optional within a standard TXC file are mandatory in a BODS file. The BODS profile also stipulates the way that some of the data entries must be configured – this may be different to how you would export it as a normal TXC 2.4 file. It means that producing a standard TXC file will not produce a compliant BODS file. That is why we created a separate BODS Exporter which meets the PTI Profile standard.



MEET DfT STANDARDS

Provide data to the BODS compliance standard



SEAMLESS INTEGRATION

Export timetable files directly from the platform OmniTIMES



STAY AHEAD

Stay at the forefront of data integration across the passenger transport industry

Contact and demo request

For more information or discuss your requirements, please contact:

EPM Bus Solutions

01527 556 940

epm@epm-bus.com

www.epm-bus.com



Omnibus Solutions

0161 683 3100

info@omnibus-uk.com

www.omnibus.solution

