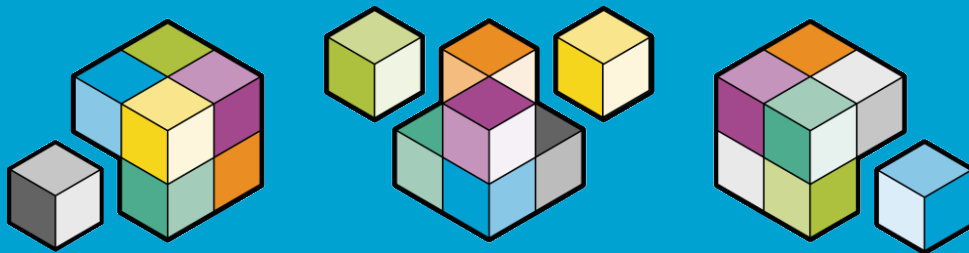
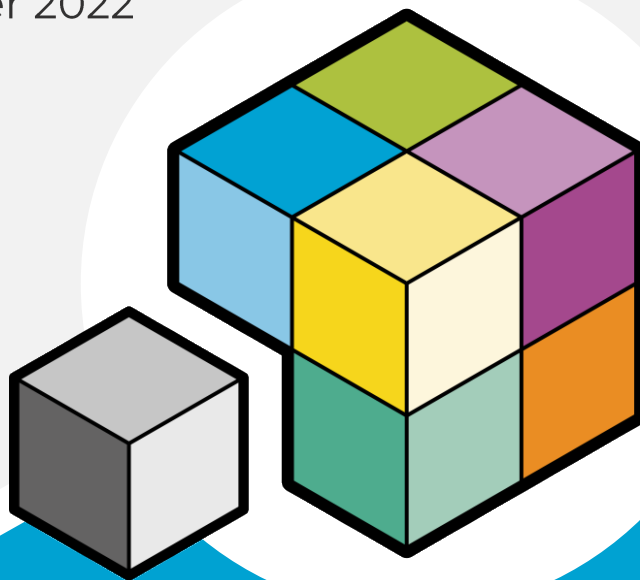


Digital Place for Communities SAAS

G-Cloud 13 [Pricing](#)

September 2022



www.placecube.com

G-Cloud 13 Pricing

G-Cloud Service Name

Digital Place for Communities (SaaS).

Service Overview

A secure, scalable, responsive, knowledge exchange, collaboration and integration solution based on Liferay's Digital Experience Platform (DXP), offering you the next generation of intranet/extranet. Drive engagement and harness collective knowledge in communities with a proven experience that works across boundaries, bringing people and knowledge together in one place.

Please see the Digital Place for Communities service definition for further information.

Pricing

Digital Place for Communities pricing is offered as a dedicated service or as a multi-tenanted service, with different pricing options set out in the two tables below.

Any additional activities such as data migration, extra implementation support days or establishment of integration with services, systems or networks will be in line with resources required for that activity. The individual day rate for each resource type is included in the SFIA rate card.

Option 1 – dedicated service:

Service	Price per annum
Foundation: <ul style="list-style-type: none"> • Annual Liferay DXP subscriptions • x1 production instance • x1 non-production instance • Hosting, maintenance and technical support • UK based support desk services (business hours) • Scalable for hundreds of thousands of users • Half-day community management training session for up to 12 delegates to be taken within first 3 months 	£70,000
Implementation	£7,500 (one-off fee)
Add-Ons:	
Non-production environment	£15,000
Production instance	£20,000
Back-up instance	£10,000
Non-production instance	£5,000
24*7 support	£12,000
Additional full-day community management training for up to 12 delegates	£2,500
E-commerce: <ul style="list-style-type: none"> • As part of foundation subscription described above (x1 production and x1 non-production instance) • Additional production instance • Additional back-up instance • Additional non-production instance 	£21,750 £17,400 £8,700 £4,350

Notes

Recommended configuration is for x2 production and x2 non-production instances to provide high availability and built-in resilience (total £95,000 p.a.).

Contract information

Please see full terms and conditions.

Option 2 – Multi-tenanted service:

Includes: hosting, maintenance and technical support and UK based support desk services (business hours).

Number of Users	Price per annum
Up to 500 registered users	£6,000 <i>(£12 per user)</i>
Up to 1,000 registered users	£9,000 <i>(£9 per user)</i>
Up to 2,500 registered users	£15,000 <i>(£6 per user)</i>
Up to 5,000 registered users	£20,000 <i>(£4 per user)</i>
Up to 10,000 registered users	£30,000 <i>(£3 per user)</i>
Each Registered user above 10,000	£1 per user
Implementation	£7,500 (one-off fee)

Contract information

Please see full terms and conditions.